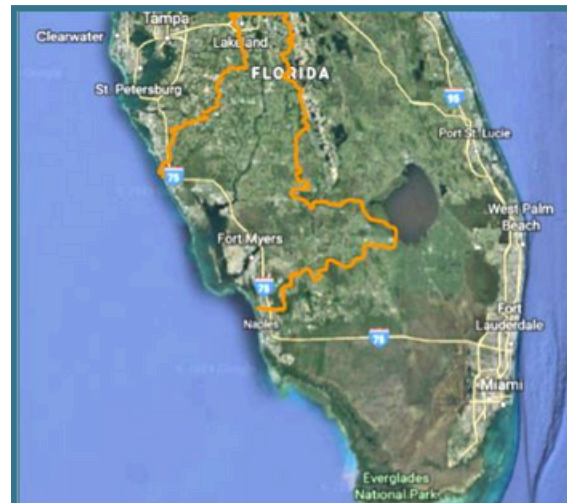
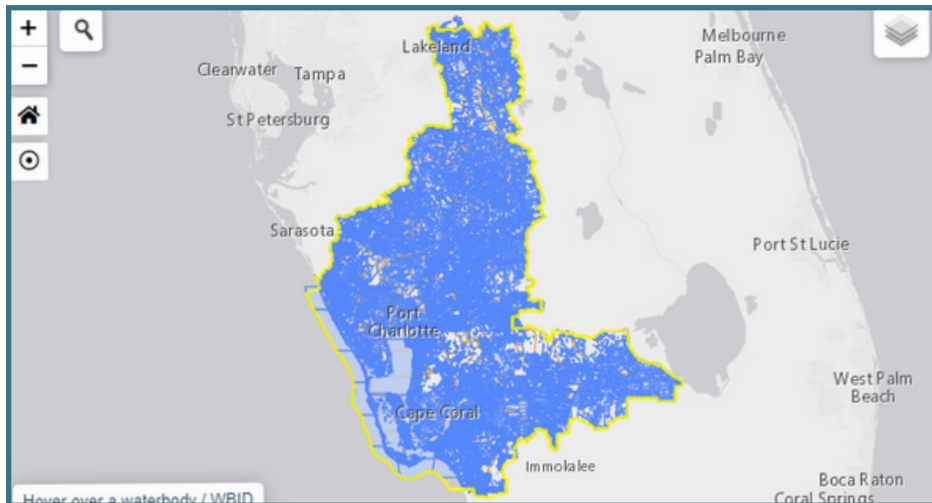


CHNEP Water Atlas

WATER QUALITY IMPROVEMENT



Summary

The CHNEP Water Atlas is a web-based resource center providing both technical users and interested community members with a one-stop shop to find everything from water quality, flow, and habitat data to information about educational events and volunteer resources in Central and Southwest Florida. This site is a readily accessible way to find more information about local waterways with real-time and up to date data and water quality and flow trend information.

The site is a resource that the Coastal & Heartland National Estuary Partnership (CHNEP) continues to provide for local scientists, resource managers, elected officials, and the public through various user-friendly maps and charts. CHNEP provides the funding necessary to maintain and annually update the site to ensure continued access to water quality data and analyses. Outlined below are a few of the newest additions and improvements featured on the CHNEP Water Atlas.

New Features and Enhancements

Waterbody Pages: New waterbody pages are presented with associated WBIDs and feature impairment status, criteria, water quality dashboard dials, associated data, and 4 interactive mappers for water quality, hydrology, wildlife/habitat, and resiliency/weather.

Location: CHNEP Area

Partners: University of South Florida Water Institute, Coastal Charlotte Harbor Monitoring Network, Lee County, CHNEP Management Conference Members

Implemented: 2011

Status: Ongoing

CHNEP Cost: \$137,821

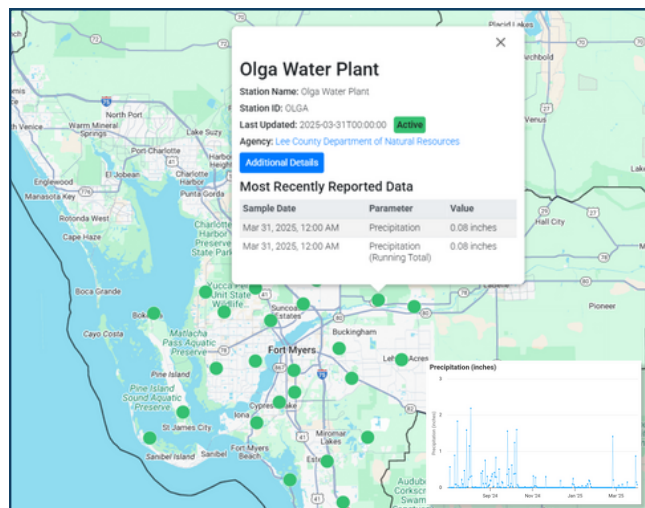
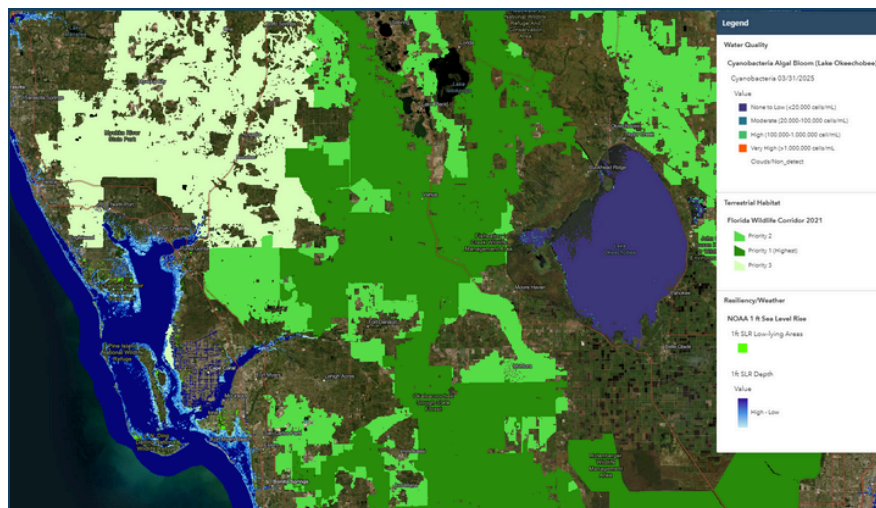
Funding Source: Environmental Protection Agency (EPA)

2025 CHNEP Plan Activity:



Water Quality Improvement 1.2: Support uploading and archiving of data in standard, common public databases, including FDEP's database and the CHNEP Water Atlas.

COASTAL & HEARTLAND NATIONAL ESTUARY PARTNERSHIP



New Basin Pages: New basin pages are presented with associated Minimum Flows and Levels (MFL), habitat restoration needs and habitat evolution model results, annual rainfall totals, land use/land cover maps, economic valuation reports, and relevant CHNEP project information.

Lake Okeechobee Waterbody Page: This page provides impairment status and water quality criteria information for Lake Okeechobee WBIDs as well as shows recent lake levels and the corresponding rate of discharge of water into the Caloosahatchee River, as compared to Lake Management Bands defined in the LOSOM and optimum ranges for ecological health.

New Map Layers: Several layers were recently added to the CCMP Maps including projections for changes in sea water levels from NOAA, daily Chlorophyll-a concentrations, daily Cyanobacteria concentrations in Lake Okeechobee, flooding inundation and nutrient loading analyses from the City of Winter Haven, and the Florida Wildlife Corridor.

Lee County Daily Rainfall Data: Daily rainfall totals from Lee County rain gauges are presented on the Real-Time Data Map. The latest one week of daily rainfall totals will also be displayed on CCMP Maps accessible through individual waterbody pages.

SCCF RECON Data: Real-time water quality data from SCCF's River, Estuary and Coastal Observing Network (RECON) are presented on the Real-Time Data Map.

Visit the CHNEP Water Atlas at www.chnep.wateratlas.usf.edu

CONTACT INFORMATION

1050 Loveland Blvd., Suite D
Port Charlotte, FL 33980
(941) 833-6580
CHNEP.org



Uniting Central and Southwest Florida to protect water and wildlife