

Candidate Property Dashboard Enable Prioritizing Land for Conservation Acquisition

Debra Childs Woithe, Environmental Lands Division Manager

CHNEP Watershed Summit, June 21, 2023

Public Engagement Session, 2 – 4:30 PM



*...focused on the conservation of
Manatee County's environmental
heritage to benefit today's and
future generations.*

2020 Conservation and Parks Projects Referendum

- Grass roots effort involving multiple organizations
- *“To finance the acquisition, improvement, and management of land to protect drinking water sources and water quality, preserve fish and wildlife habitat, prevent stormwater runoff pollution, and provide parks...”*
- Supported by 72% of Manatee County voters



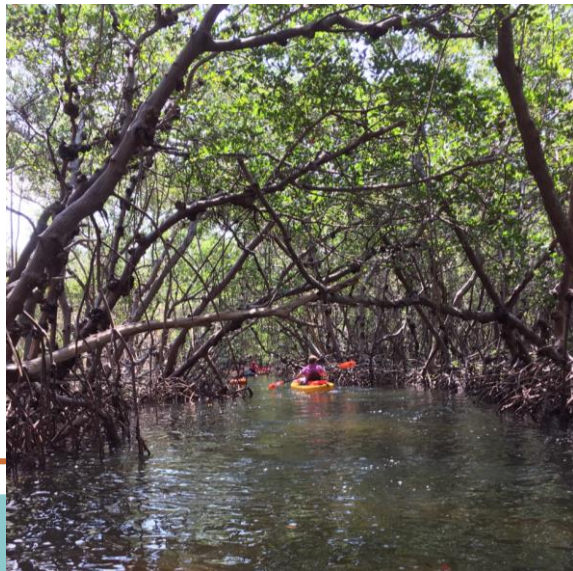
CONSERVATION FINANCE FEASIBILITY STUDY | OCTOBER 2019

MANATEE COUNTY, FLORIDA



Implementation of 2020 Conservation and Parks Projects Referendum

- **Environmental Lands Management & Acquisition (ELMAC) Ordinance**
 - Provides for process, criteria and a committee
 - *Advise the Board of County Commissioners on environmental land acquisition, management, and recreational use of conservation lands*
 - Ensure public participation in decisions made

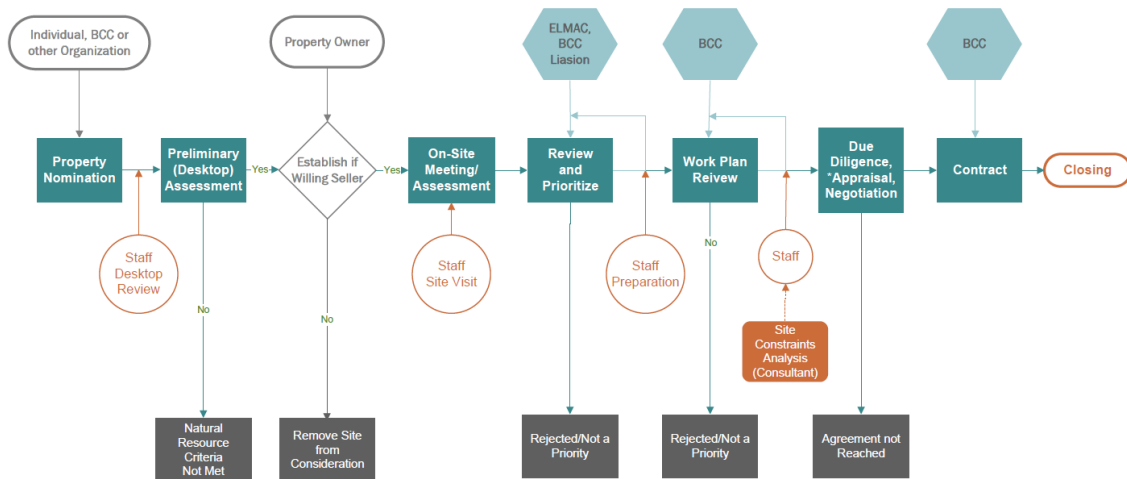


Candidate Property Communications

- Transparency, accountability, oversight
- Reporting to ELMAC, BCC, Stakeholders
- Public outreach & community input



Conservation and Parks Acquisition Process



Home » Departments » Parks & Natural Resources » Environmental Lands Program

PARKS & NATURAL RESOURCES

- About
- Activity Guide
- Agriculture & Extension Service
- Athletic Leagues
- Camps for Kids
- Education Programs & Events
- Environmental Protection
- G. T. Bray Recreation Center
- Healthy Living Opportunities
- Marine Resources
- Parks, Preserves & Beaches
- Public Pools
- Special Initiatives
- Volunteer in our Parks and Preserves

ENVIRONMENTAL LANDS PROGRAM

The Environmental Lands Program is focused on the conservation of Manatee County's environmental heritage to benefit today's and future generations. Staff works with the Environmental Land Management and Acquisition Committee (ELMAC) to advise the Board of County Commissioners (BCC) on environmental land acquisition, management, and recreational programming. The BCC decides which properties can be purchased. Only properties whose owners are willing to have their lands considered for conservation acquisition are assessed by the program.

The program provides for both fee simple and conservation easement acquisition. A fee simple purchase transfers full ownership of the property to another party. A conservation easement, also known as "less-than-fee" purchase, acquires only the property rights needed for the conservation goal (i.e., development and land use conversion rights). More on conservation easements and their benefits can be found at this link.

A grassroots effort, led by individuals and organizations throughout the region, resulted in a successful 2020 Referendum to finance the acquisition, improvement, and management of conservation lands. The Conservation and Parks Projects Referendum calls for a 0.15 mill ad valorem tax and up to \$50,000,000 in general obligation bonds. While the referendum provides a dedicated funding source, partnerships with many other organizations result in additional funds and resources that support the success of the program.

There are sixteen preserves in Manatee County that have been established through a combination of land donations, land purchases, grants from other organizations, and partnerships with Land Trusts. Habitat restoration, ongoing resource management and providing access for hiking, biking, running, swimming, paddling, horseback riding, fishing, hunting, camping and picnics are rewarding challenges for Manatee County staff. Many Recreational and Outdoor Education opportunities are provided.

NOMINATE A PROPERTY

ENVIRONMENTAL LAND ACQUISITION NOMINATION FORM

Resolution 20-155 funds "Conservation and Parks Projects", specifically the acquisition of lands to protect water quality and fish and wildlife habitats from stormwater runoff pollution, to preserve environmentally sensitive lands and to provide public parks. The "Manatee County Environmental Land Management and Acquisition Ordinance" (Article IV Sections 2-25.51 through 2-25.63) ensures public participation in the process and that funds are dedicated to an efficient, fair, well-planned, and economically sound procedure to the acquisition, protection and management of the environmental lands and other conservation property interests.

NOMINATING PARTY CONTACT INFORMATION

Today's Date: _____ Affiliation: _____
 Name: _____ Phone: _____
 Address: _____ Email: _____

OWNER CONTACT INFORMATION

Name: _____ Parcel ID #: _____
 Property Address: _____
 Mailing Address: _____
 Phone: _____ Email: _____

PROPERTY DESCRIPTION

The main criteria for conservation acquisition criteria are 1) rarity of species or habitat, 2) connectiveness with other environmental lands, 3) ecological quality and 4) importance to water resources. Please describe the property's value in terms of these natural resource characteristics.

Other notable site features, including existing improvements, structures, and potential for public access.

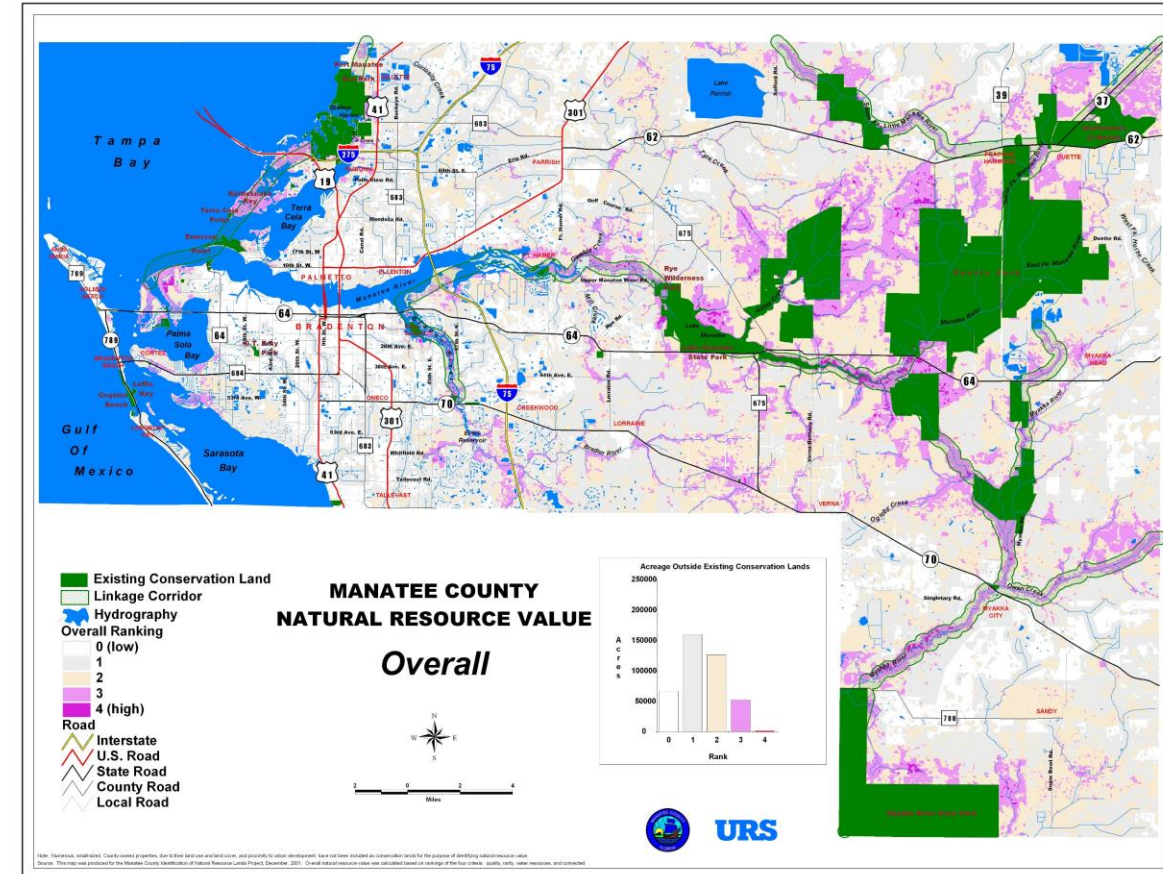
Indicate if fee acquisition, conservation easement or other type of acquisition is anticipated, and provide any additional reasons this property should be purchased.

Please provide map showing location and boundary of site. Photographs and additional information are optional. This form, together with additional information, will be reviewed by County staff to determine if the criteria for natural resource value are met. If criteria are met and the property owner is willing to donate, sell or provide a conservation easement for the property, further information will be collected.

Question? Contact the Parks and Natural Resources Department at (941) 742-5923, ext. 6052
 Return completed form and additional information to: debra.walsh@manatee.org or
 Debra Walsh, G.T. Bray Recreation Center, Room 211, 1903 3rd Avenue Drive West, Bradenton, FL 34209

Natural Resource Value Criteria

- ELMAC (2003)
 - Ecological Quality of species or habitat
 - Rarity of Species or Habitat
 - Connectivity
 - Importance to Water Resources
- ❖ REFERENDUM LANGUAGE (2020)
 - Drinking Water Protection
 - Water Quality Protection
 - Prevent Stormwater Runoff Pollution
 - Preservation of Fish Habitat
 - Preservation of Wildlife Habitat
 - Provision of Parks



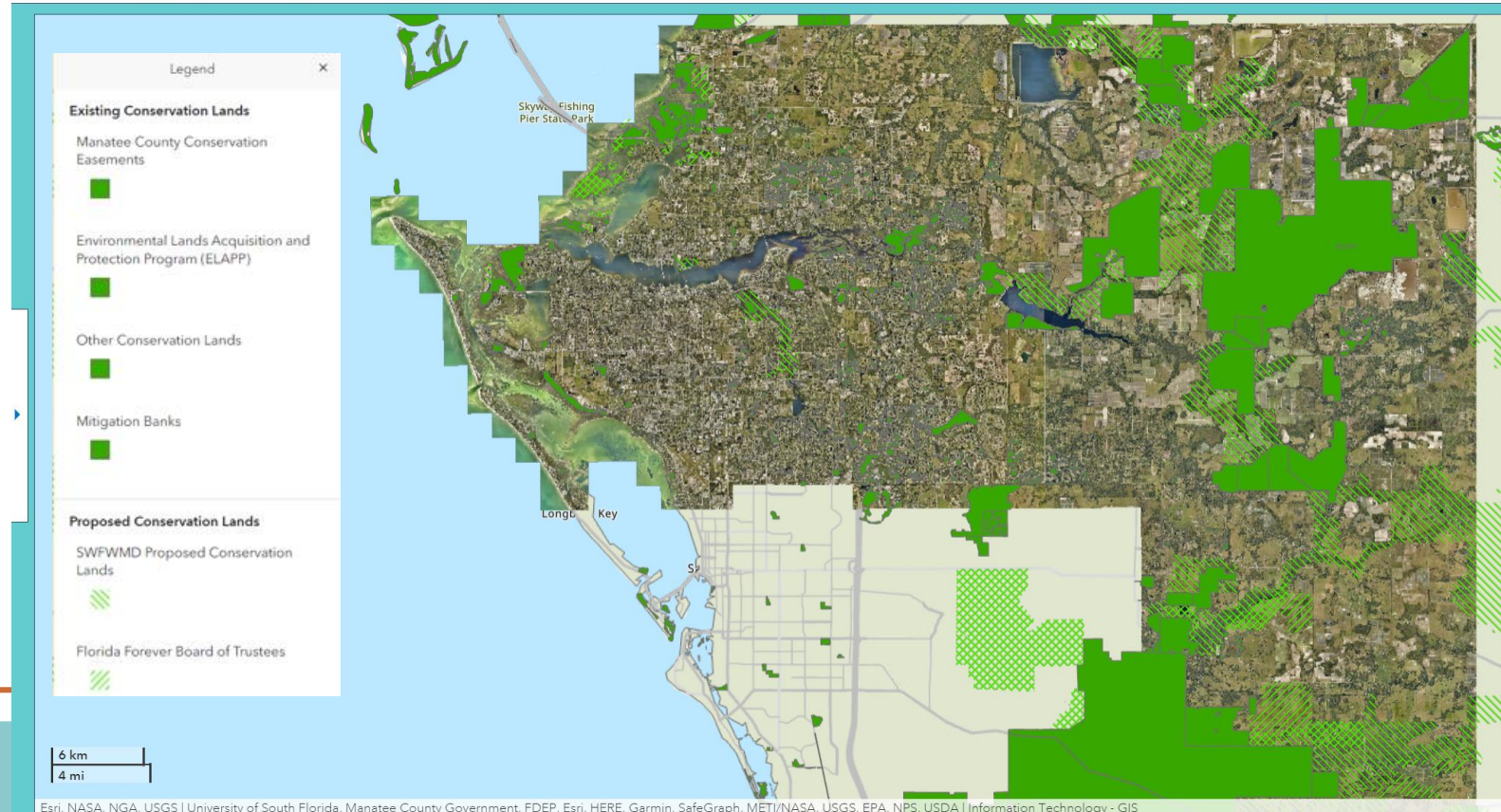
Additional Considerations

- Optimal Boundary Considerations
- Community need for park
- Public use benefits
- Partnerships
- Grant funding
- Owner discount
- Conservation Easements
 - Agricultural



Environmental Lands Candidate Property

Select a property from the dropdown on the right to filter the dashboard; otherwise, click a property in the map to view additional details

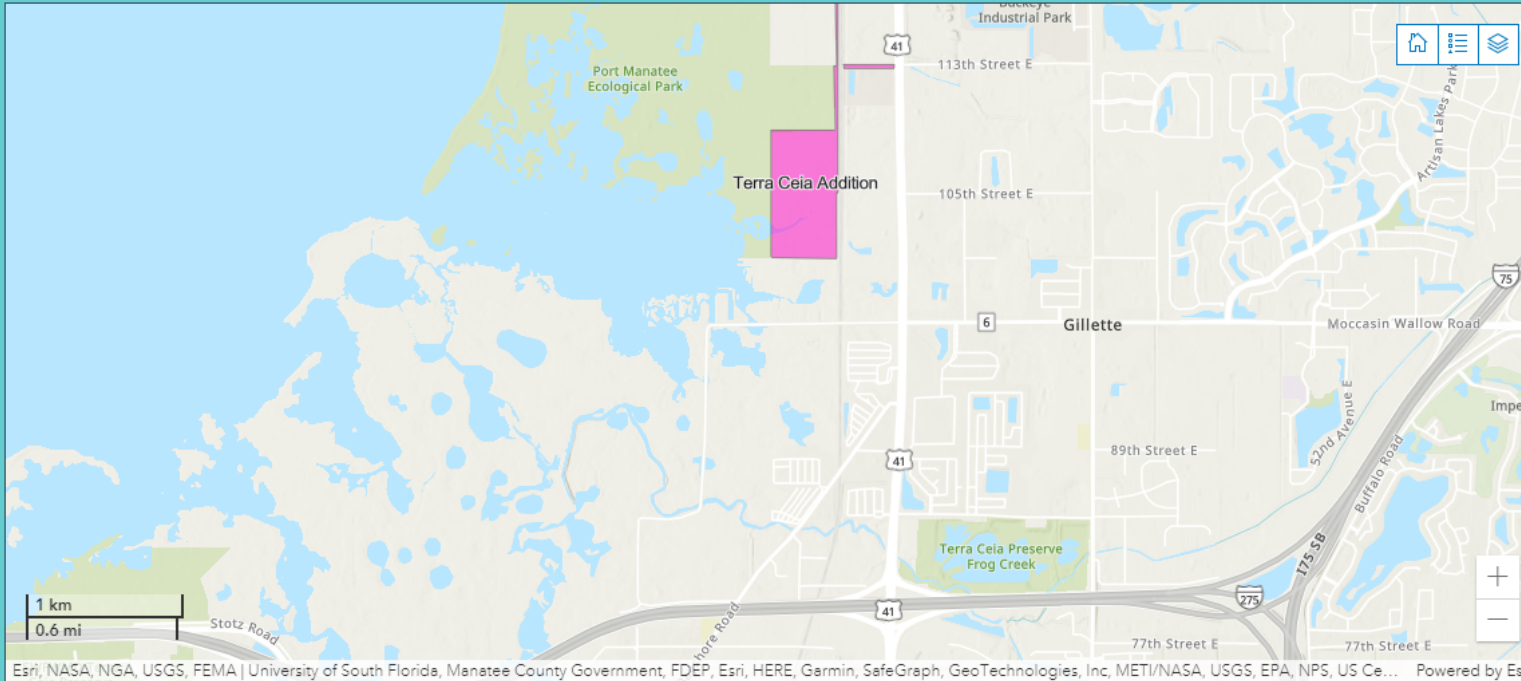


Dashboard Reporting

Environmental Lands Candidate Property

Select a property from the dropdown on the right to filter the dashboard; otherwise, click a property in the map to view additional details

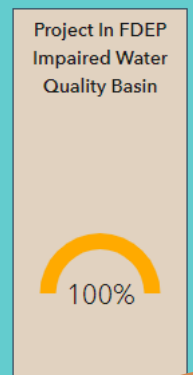
Select Property Name
Terra Ceia Addition



Esri, NASA, NGA, USGS, FEMA | University of South Florida, Manatee County Government, FDEP, Esri, HERE, Garmin, SafeGraph, GeoTechnologies, Inc, METI/NASA, USGS, EPA, NPS, US Ce... Powered by Esri

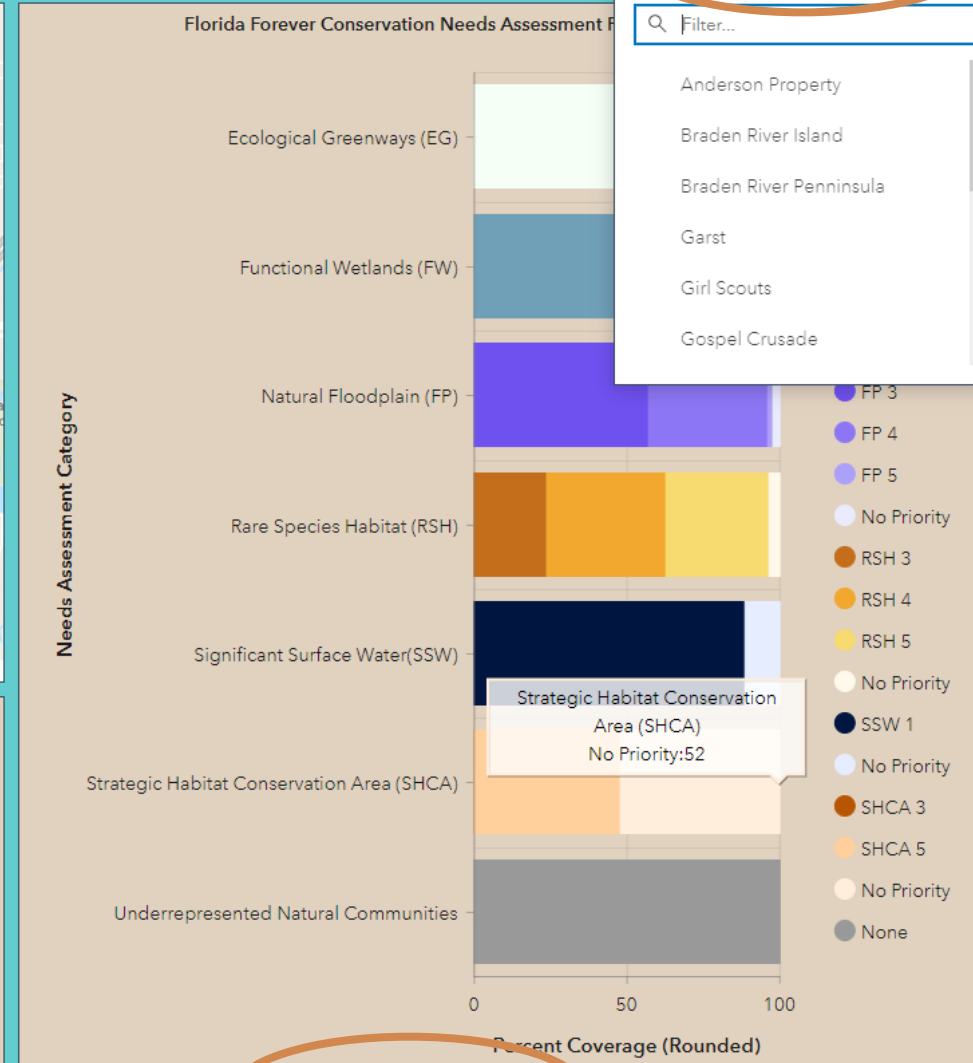
Project Acreage
90

Improved Value to Just Value
0



Status: BCC Review
Acquisition Type: Fee Simple
Public Access: YES
Recreation Activities:
Potential Conservation Partners: Florida Forever, SWFWMD proposed acquisition
Historical and Cultural Resources:
Other Notes: Not expected

Drinking Water Protection: No
Water Quality Protection: Yes
Prevention of SW Runoff Pollution: Yes
Preservation of Fish Habitat: Yes
Preservation of Wildlife Habitat: Yes
Provision of Parks: Yes



Project Info

More Details

Reference Documents

Referendum Considerations

Natural Resources Criteria

Land Use / Land Cover

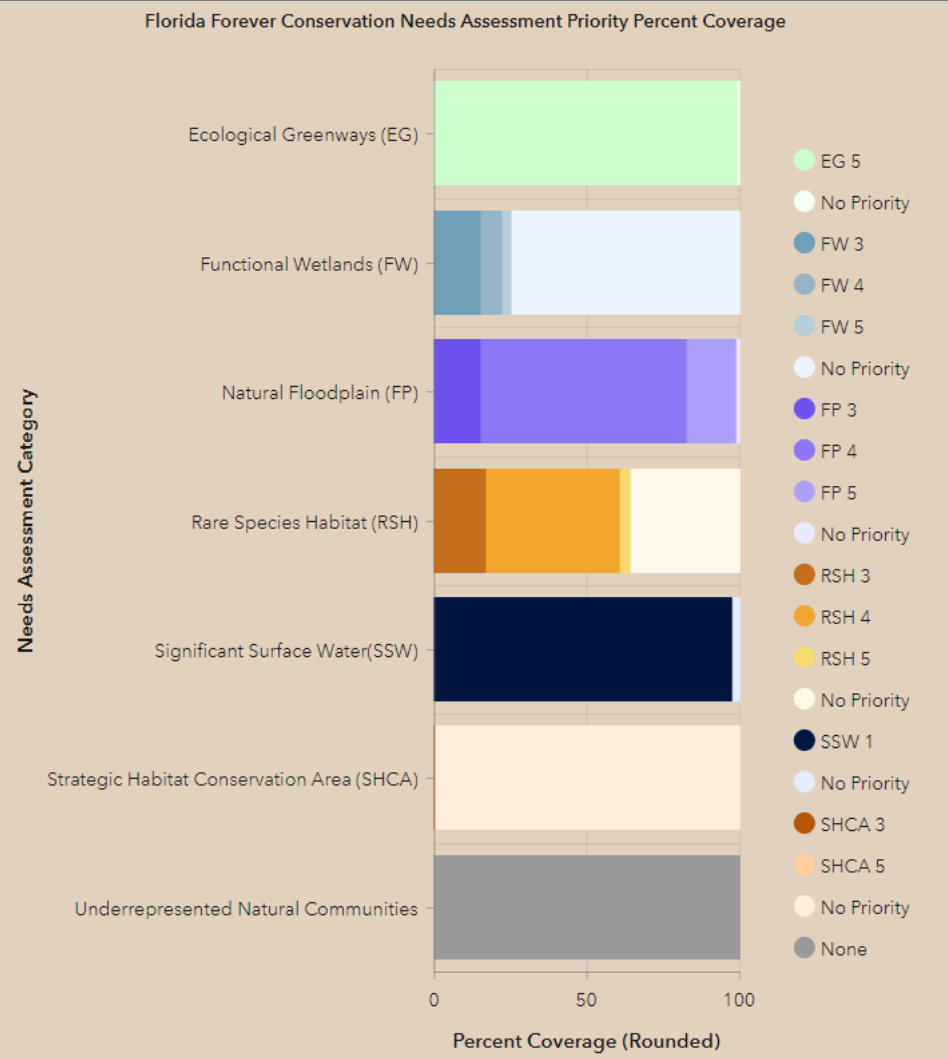
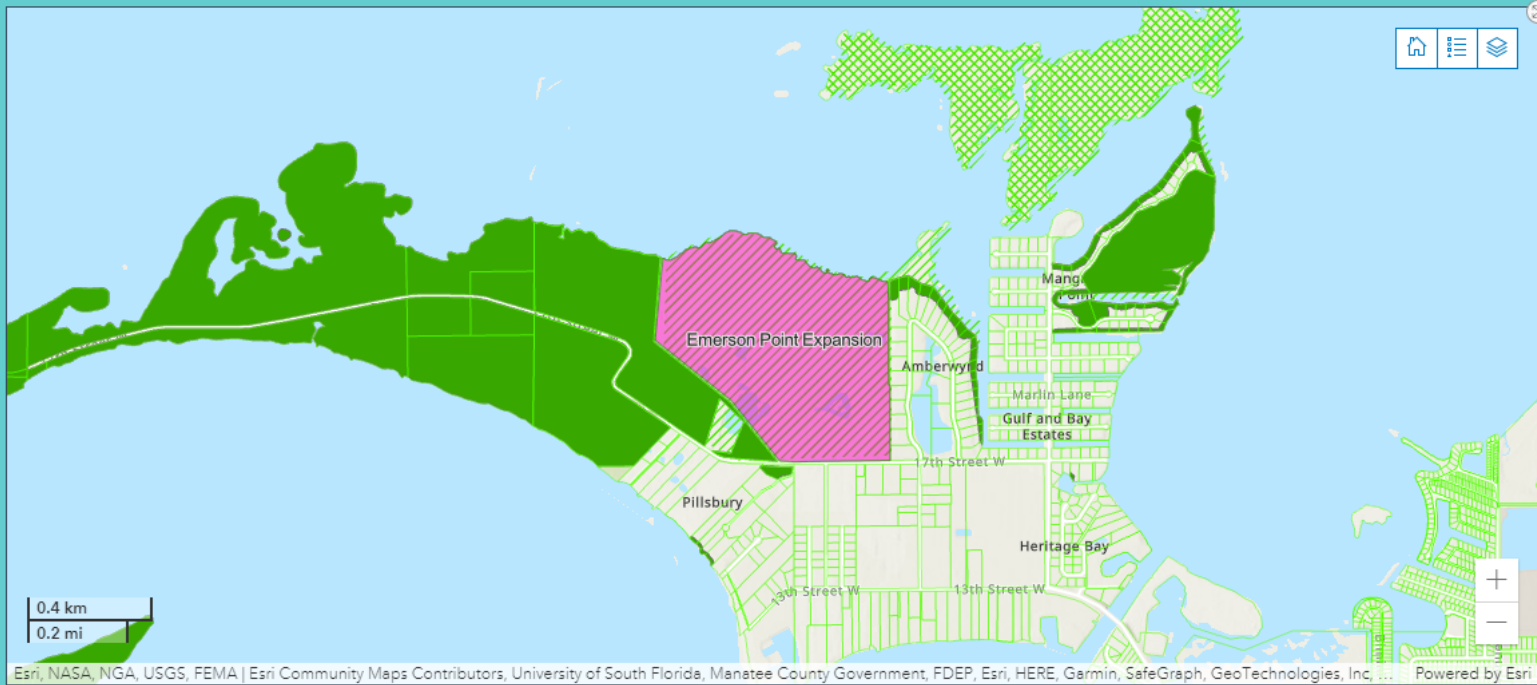
Conservation Needs Assessment

Dashboard Reporting

Environmental Lands Candidate Property

Select a property from the dropdown on the right to filter the dashboard; otherwise, click a property in the map to view additional details

Select Property Name
Emerson Point Expansion



Project Acreage

97

Project In FDEP Impaired Water Quality Basin

100%

Status: ELMAC Review
Acquisition Type: Uncertain
Public Access: YES
Recreation Activities: Kayaking, Hiking, Birding
Potential Conservation Partners: Florida Forever
Historical and Cultural Resources:
Other Notes:

Improved Value to Just Value

0.03

Quality: 3
Rarity: 1
Water Resources: 4
Connectivity: 4

Project Info
More Details
Reference Documents
Referendum Considerations
Natural Resources Criteria
Land Use / Land Cover
Conservation Needs Assessment

Values of 4 are highest and 0 are lowest. Values shown are generally assigned without weighting for area. Overall natural resources values of 3 or 4 are desirable for conservation acquisition.

Dashboard Reporting - Filter



Environmental Lands Candidate Property

Select a property from the dropdown on the right to filter the dashboard; otherwise, click a property in the map to view additional details

Select Property Name

Perico Bayou

Acquisition Type

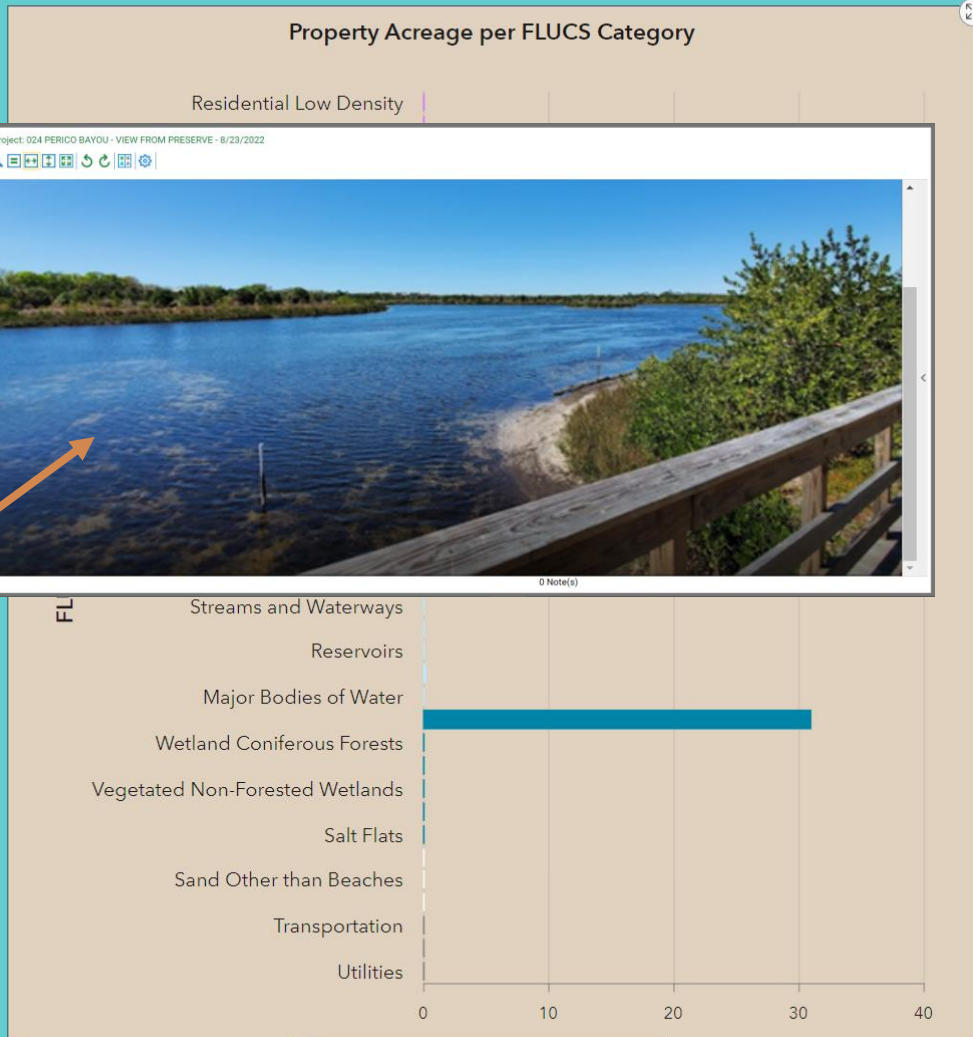
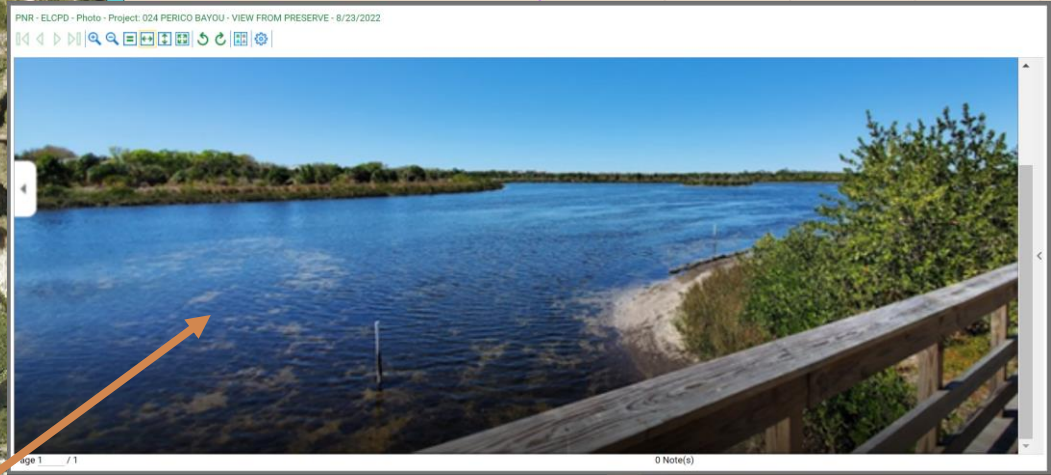
- Uncertain
- Conservation Easement
 - Agricultural Conservation Easement
 - Fee Simple
 - Combination

Property Size

- No Filter
- Less than 10 acres
- Between 10 and 100 acres
- Between 100 and 1000 acres
- Greater than 1,000 acres

Property Name

No data



new available documents, click any of the following hyperlinks to view specific reference documents associated with Perico Bayou.

- [here to view any photographs](#)
- [here to view any other documents](#)
- [here to view the Work Plan](#)

Reference Documents

Values of 4 are highest and 0 are lowest. Values shown are generally assigned without weighting for area. Overall natural resources values of 3 or 4 are desirable for conservation acquisition.

Quality: 4
Rarity: 3
Water Resources: 3
Connectivity: 4

Natural Resources Criteria

FLUCS

Land Use / Land Cover

Conservation Needs Assessment

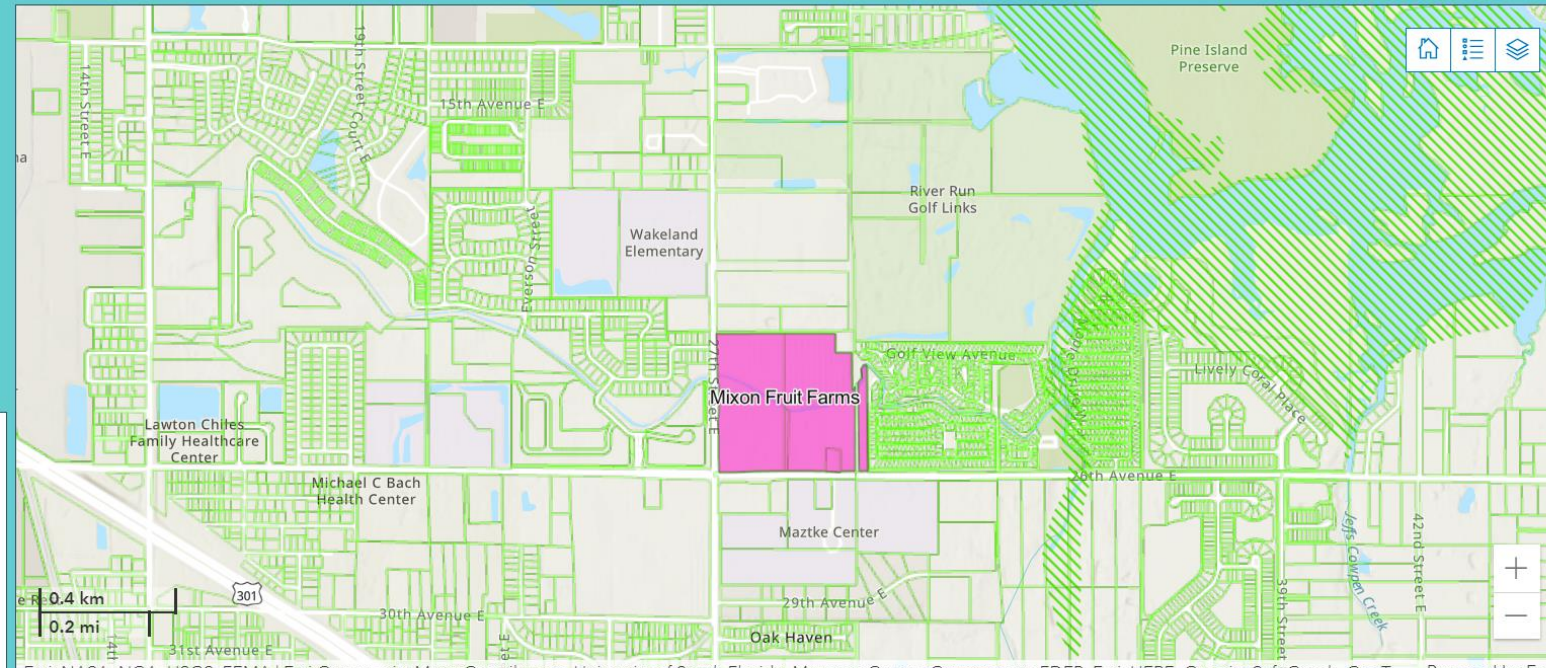
Dashboard Reporting

Environmental Lands Candidate Property

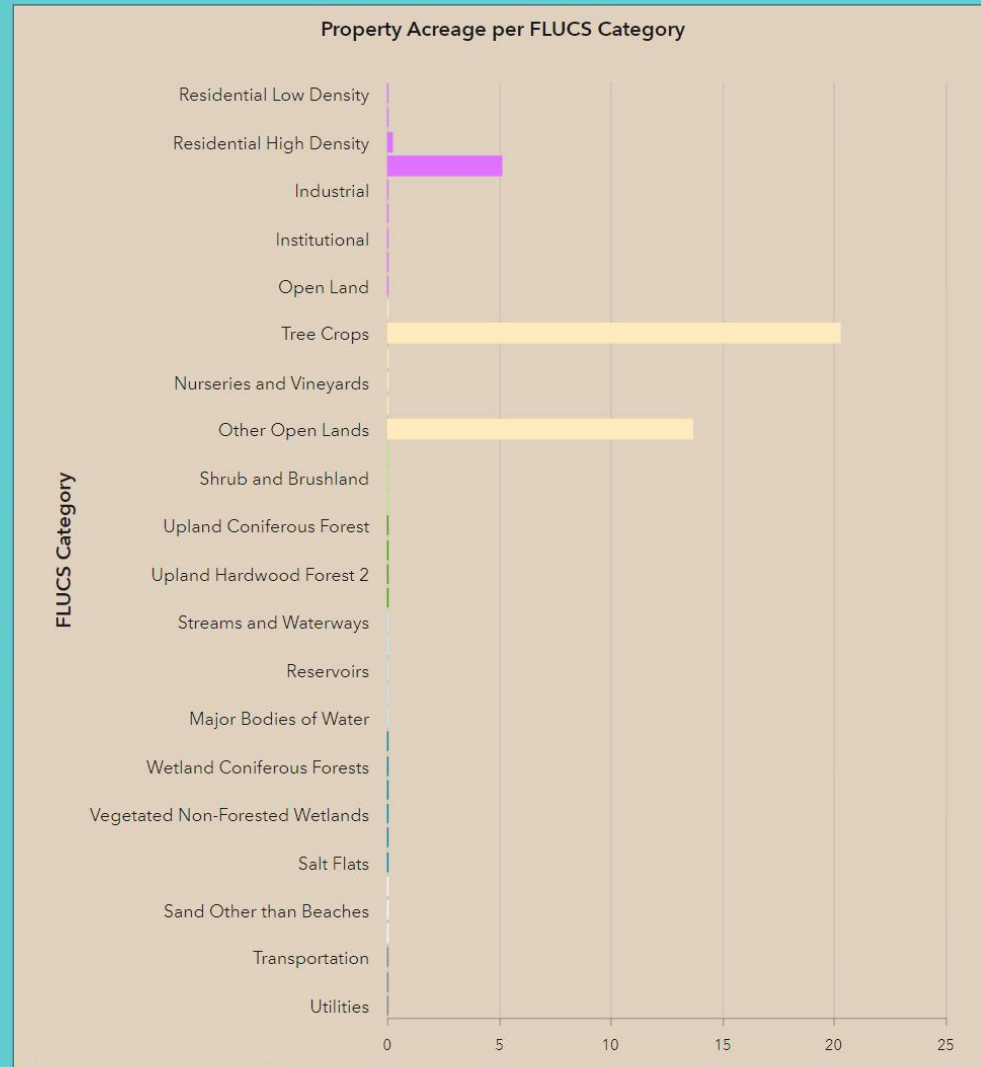
Select a property from the dropdown on the right to filter the dashboard; otherwise, click a property in the map to view additional details

Select Property Name

Mixon Fruit Farms



Esri, NASA, NGA, USGS, FEMA | Esri Community Maps Contributors, University of South Florida, Manatee County Government, FDEP, Esri, HERE, Garmin, SafeGraph, GeoT... Powered by Esri



Project Acreage

39

Project In FDEP Impaired Water Quality Basin



Status: Due Diligence/Negotiation
Acquisition Type: Fee Simple
Public Access: YES
Recreation Activities: Hike, birdwatch, garden, wildlife, camps, f. trips
Potential Conservation Partners: Coastal Estuary Program, SWFWMD, Public Works
Historical and Cultural Resources: Braden and Mixon family farms (dating back to 1849)
Other Notes: Nominated as a stormwater park

Values of 4 are highest and 0 are lowest. Values shown are generally assigned without weighting for area. Overall natural resources values of 3 or 4 are desirable for conservation acquisition.

Quality: 1
Rarity: 1
Water Resources: 3
Connectivity: 1

Improved Value to Just

0.51

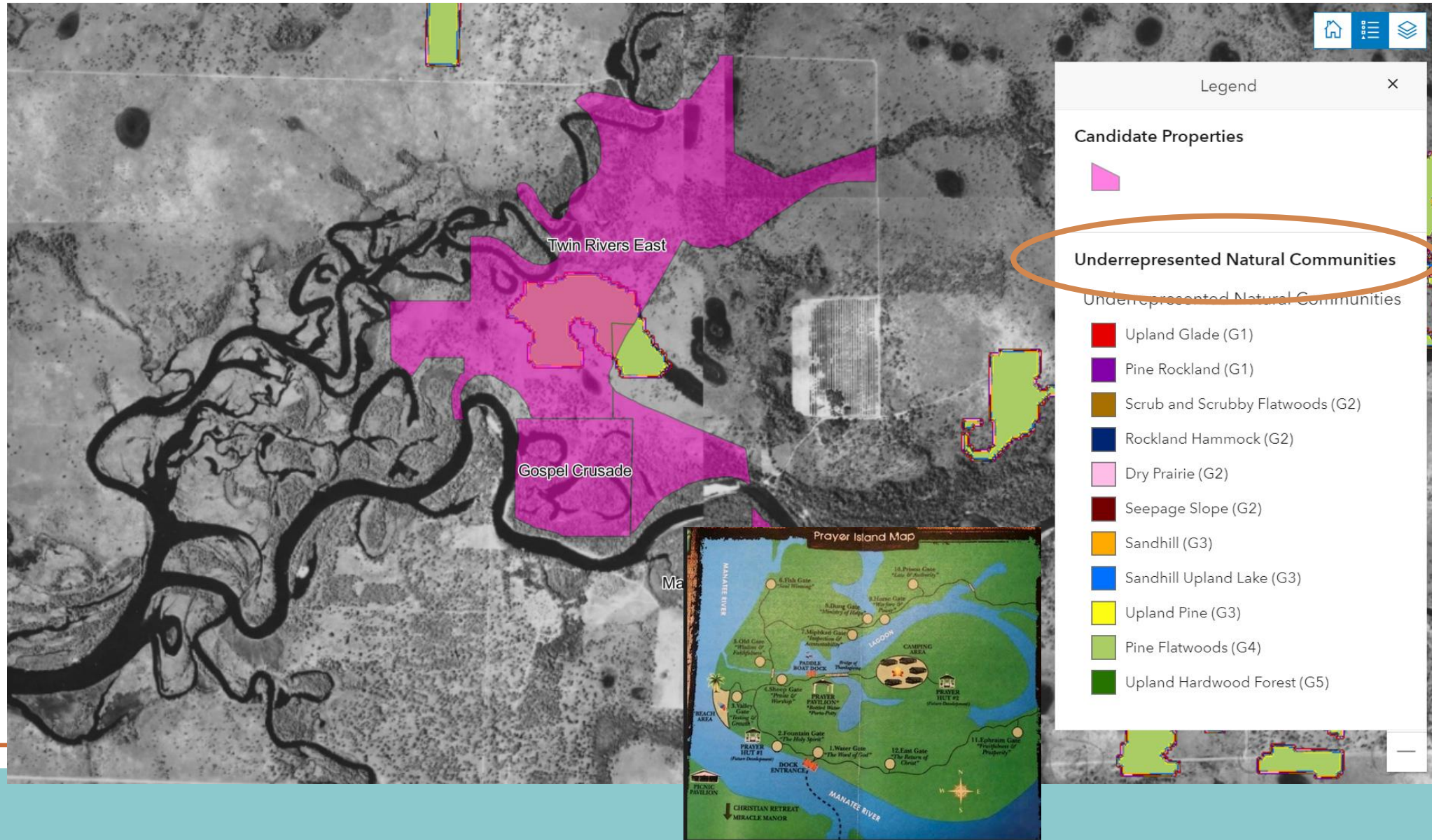
Project Info

Natural Resources Criteria

Land Use / Land Cover

Conservation Needs Assessment

Dashboard Reporting

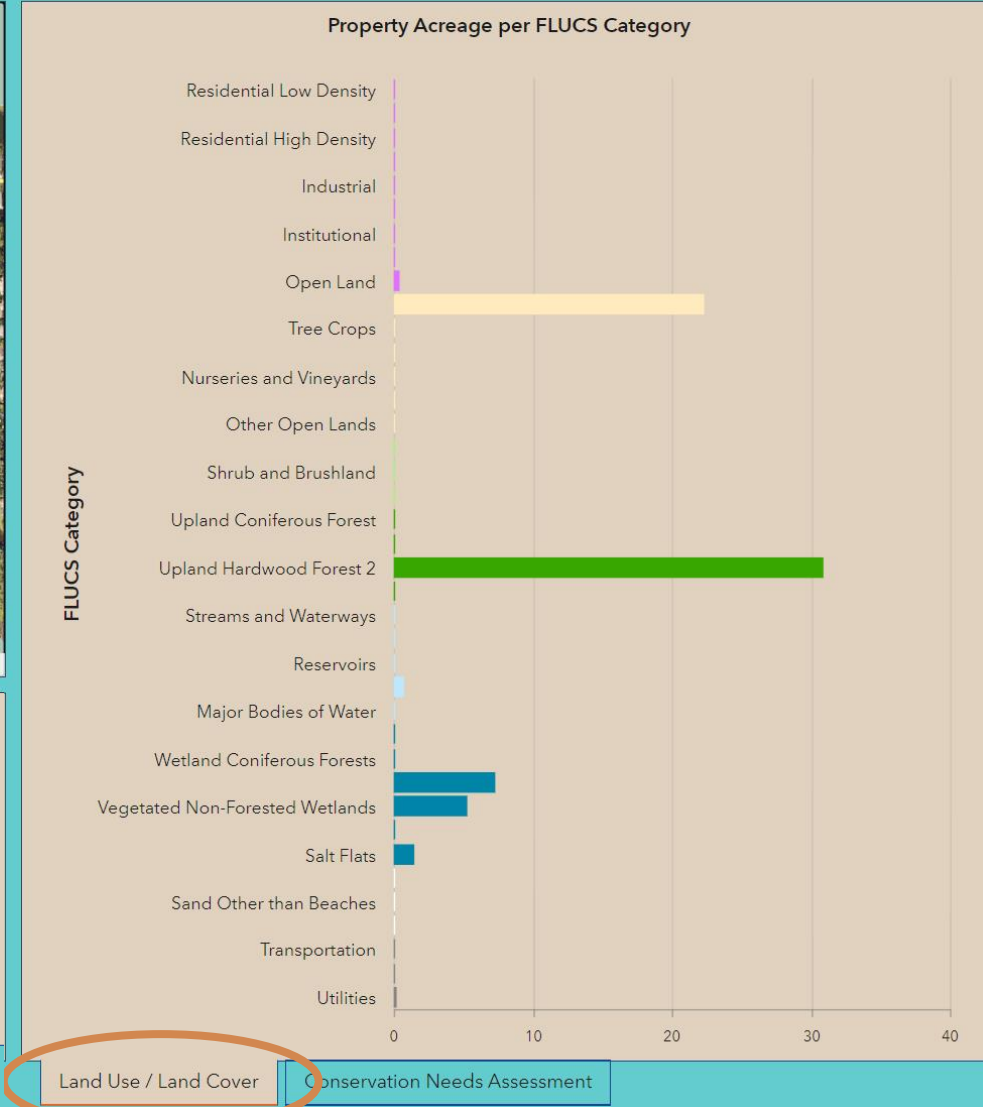
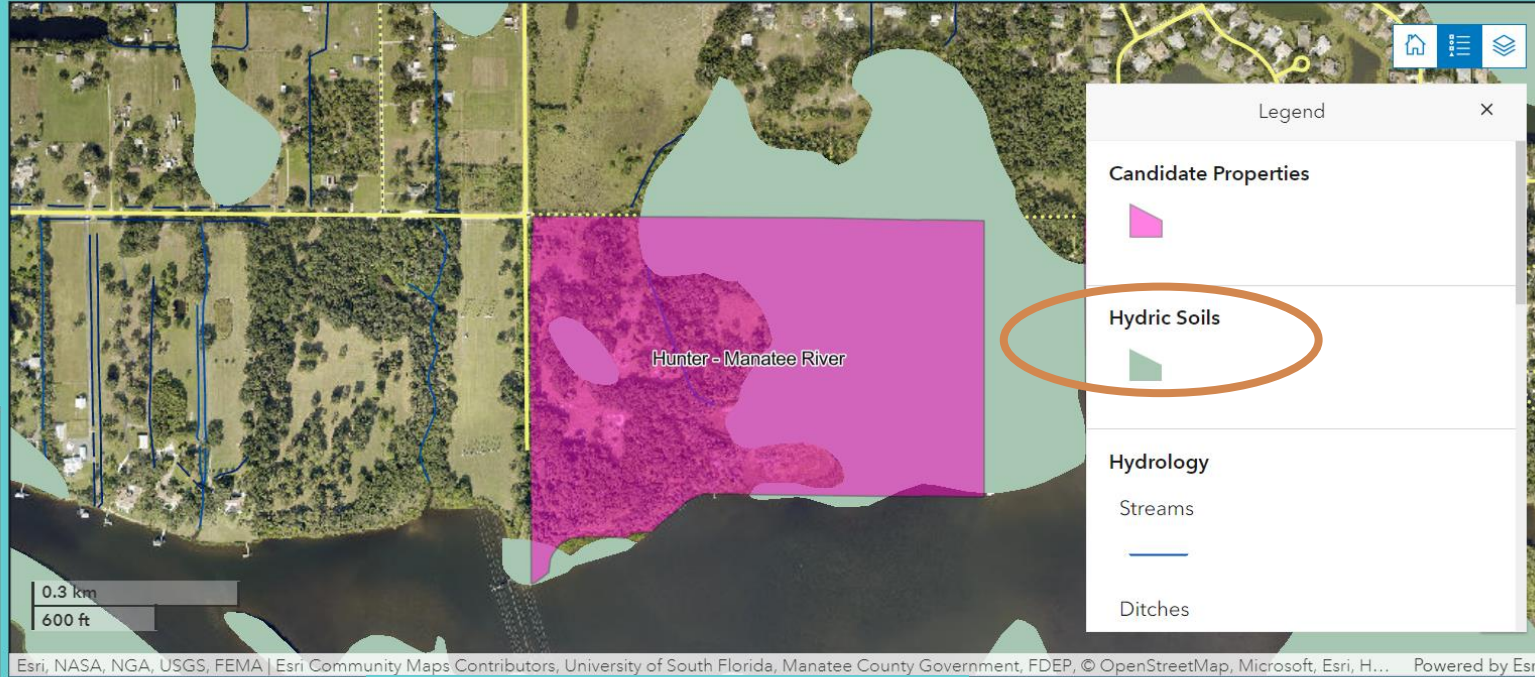


Dashboard Reporting

Environmental Lands Candidate Property

Select a property from the dropdown on the right to filter the dashboard; otherwise, click a property in the map to view additional details

Select Property Name
Hunter - Manatee River



Project Acreage

68

Project In FDEP Impaired Water Quality Basin

Improved Value to Just

0



Restoration Needs: TBD, including pasture to native habitat.
Just Value: \$1,474,535.00
Improved Value: \$5,960.00
Approved Development:
Zoning: A
Future Land Use: P/SP-1, RES-3, UF-3

Drinking Water Protection: Yes
Water Quality Protection: Yes
Prevention of SW Runoff Pollution: Yes
Preservation of Fish Habitat: Yes
Preservation of Wildlife Habitat: Yes
Provision of Parks: Yes

More Details

Referendum Considerations

Land Use / Land Cover

Conservation Needs Assessment

Accountability and Oversight Measures

- Annual Report
 - Performance measures
 - Acreage of habitats acquired (fee simple and easements)
 - Acres of habitat meeting referendum goals (water quality, habitat, stormwater, parks)
 - Selection criteria rating for parcels acquired
 - Financial Reporting
 - Expenditures for acquisition, improvement and management of land, indebtedness
 - Millage Fund Balances/funds made available by County
 - Funds provide by other organizations
 - Expenditures unrelated to Referendum purpose
- County Web Page Periodic Updates
 - Include news, dashboard indicators

