



# Florida Department of Environmental Protection

## Estero Bay Aquatic Preserve

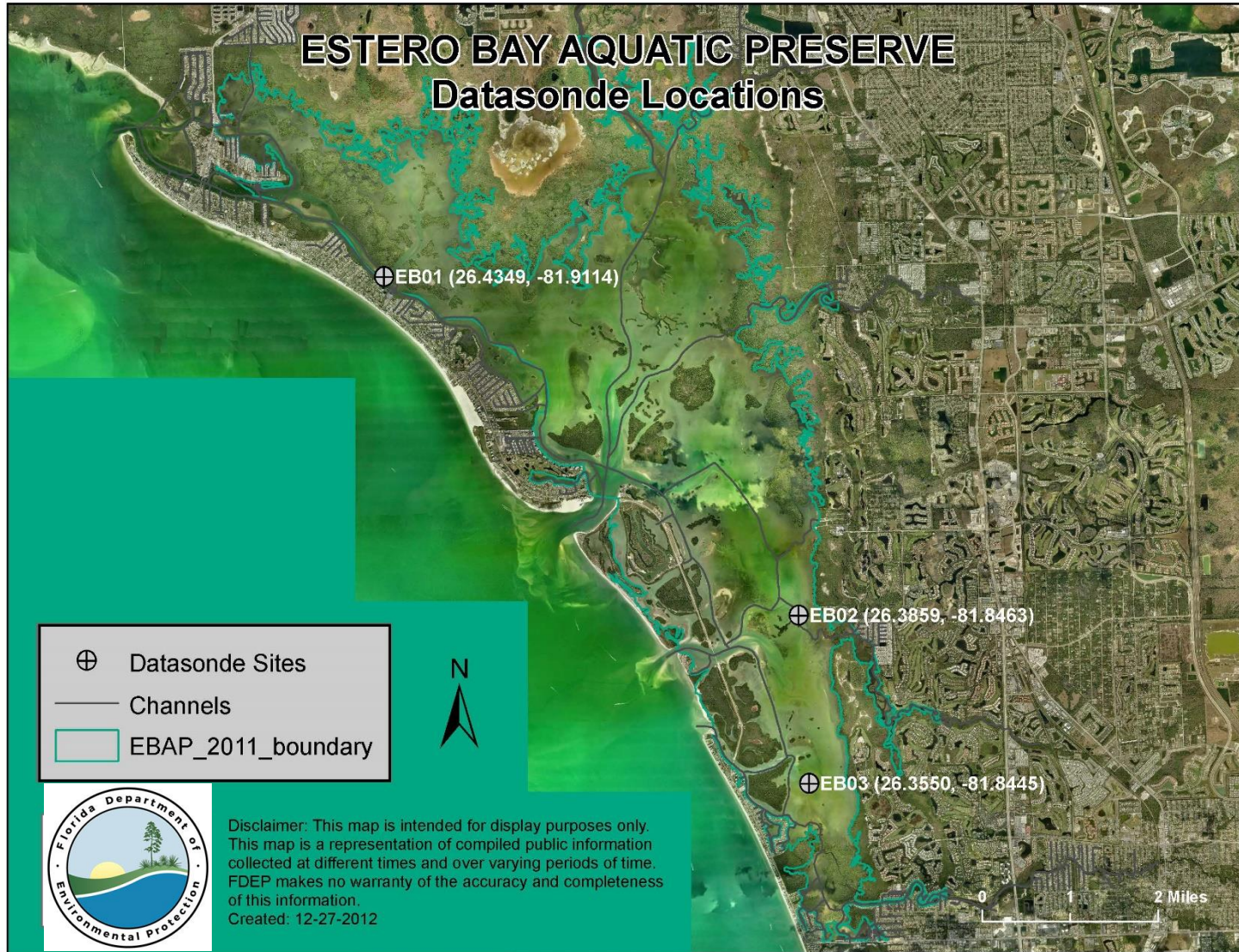
# Water Quality Trends in Estero Bay (2005-2016)

**March 28, 2017**





# Continuous Water Quality Monitoring Program







# Results

	Parameters									
	Temp		Sal		DO_mgL		pH		Turb	
Site	p-val	tau	p-val	tau	p-val	tau	p-val	tau	p-val	tau
EB01	<b>0.04</b>	0.13	<b>0.02</b>	-0.15	0.56	0.04	<b>0.05</b>	0.13	<b>0.03</b>	0.15
EB02	<b>&lt;0.01</b>	0.27	0.51	-0.05	0.69	0.03	0.13	0.11	0.72	-0.03
EB03	0.3	0.07	<b>0.04</b>	-0.14	0.19	0.09	0.2	0.09	0.36	0.06
All	<b>0.02</b>	0.15	<b>0.01</b>	-0.17	0.39	0.05	0.28	0.07	0.2	0.08

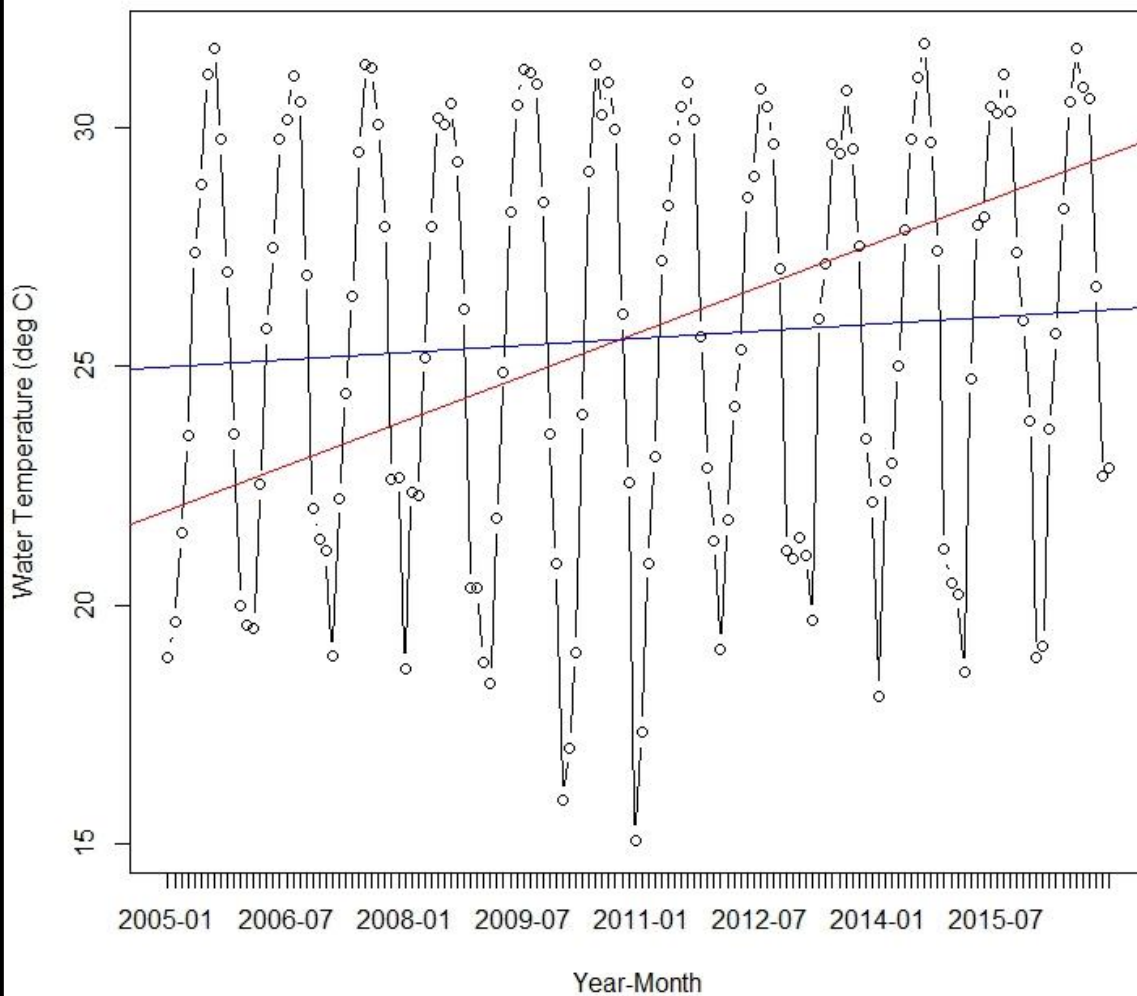


	EB01				EB02	EB03	ALL	
	Temp	Sal	pH	Turb	Temp	Sal	Temp	Sal
Trend	↑	↓	↑	↑	↑	↓	↑	↓



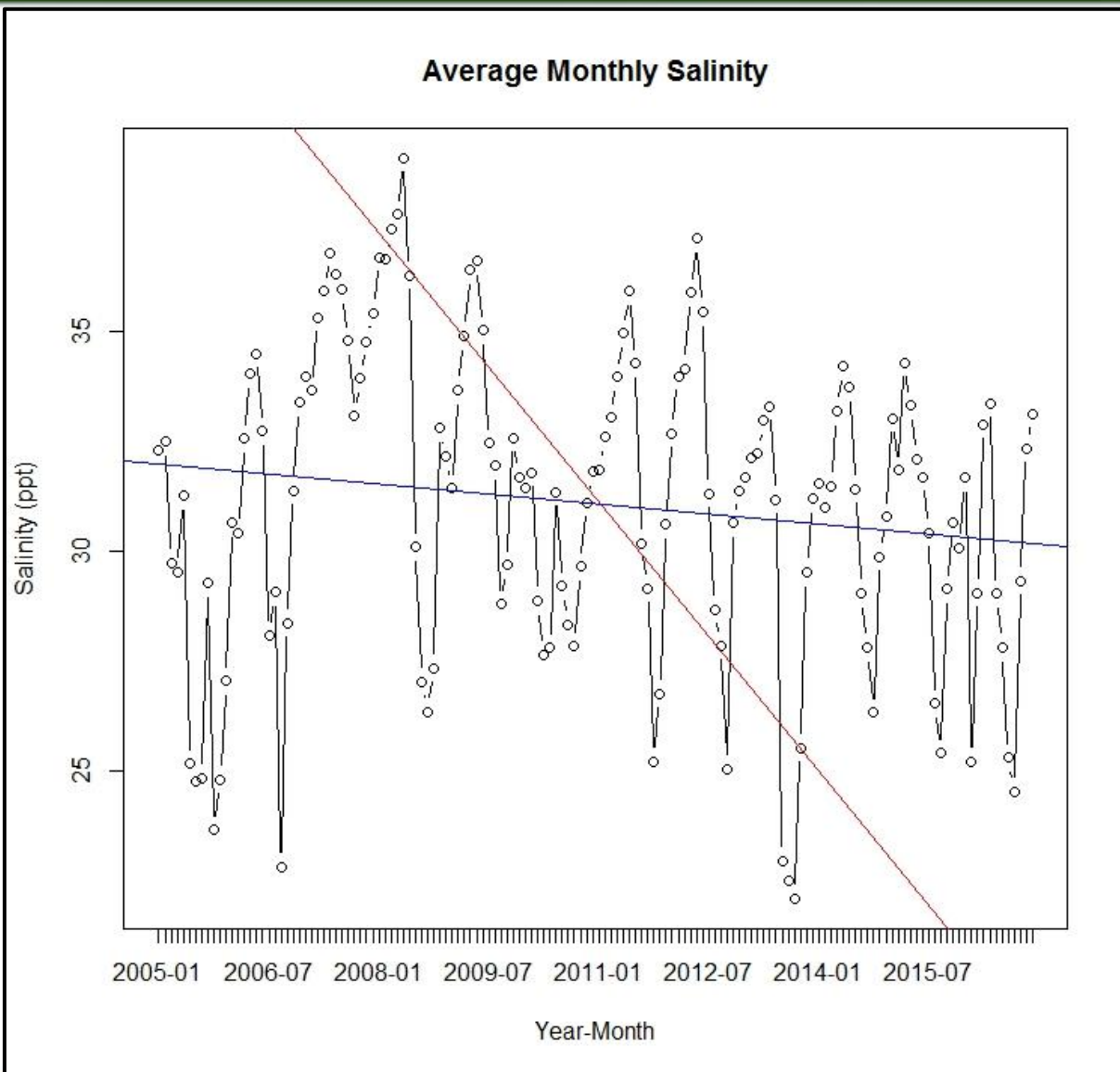
# Increasing Temperature

Average Monthly Temperature





# Decreasing Salinity







# Questions?



Rebecca Flynn

Environmental Specialist I

Estero Bay Aquatic Preserve

[Rebecca.Flynn@dep.state.fl.us](mailto:Rebecca.Flynn@dep.state.fl.us)

239-530-1002