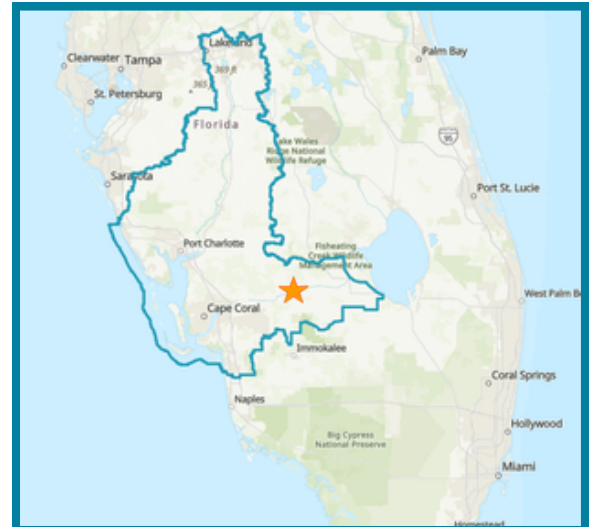
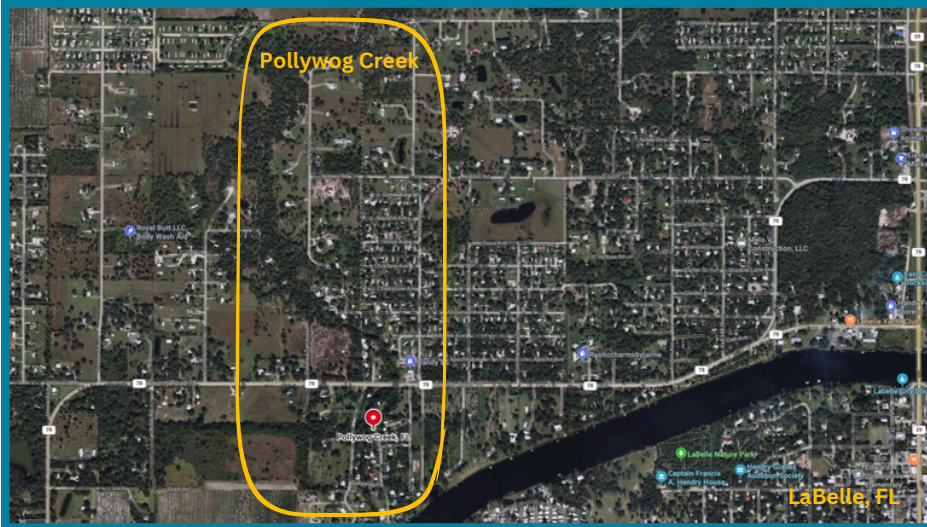


# Pollywog Creek Stabilization Project

## FISH, WILDLIFE, & HABITAT PROTECTION



### Summary

Located in Hendry County near the City of LaBelle and the Caloosahatchee River, Pollywog Creek is a 47-mile waterway known for fishing (largemouth bass, snook, catfish). Its banks were severely eroded by Hurricane Irma and are now in need of stabilization to reduce sediment runoff, which will enhance water quality in the Creek and in downstream waterways.

This project is to engineer and design detailed plans for stabilizing approximately 950 linear feet of the creek's banks and will include site assessments, hydrological studies, soil analysis, and detailed engineering drawings to ensure the stabilization measures are effective and sustainable. The project will also secure all necessary permits from local, state, and federal agencies.

Once this project is complete, bioengineering techniques and structural supports will be added in the next phase to secure the soil along the creek banks, preventing further erosion into the Creek and downstream Caloosahatchee River.

This reduction in sedimentation will improve fish and other aquatic life habitat through improving water clarity, enhancing light penetration for submerged aquatic vegetation, and supporting overall healthier ecosystem conditions.

**Location:** Hendry County

**Partners:** Hendry County

**Status:** Ongoing

**CHNEP Cost:** \$200,000

**Funding Source:** EPA IJA

**2025 CHNEP Plan Activity:** 

Fish, Wildlife, & Habitat Protection 2: Protect monitor, and restore environmentally sensitive lands and waterways including critical habitat areas.

Fish, Wildlife, & Habitat Protection 3: Assess and promote the benefits of the land, waterway, and estuary protection and restoration



## Anticipated Results and Benefits

### Enhanced Wildlife Habitat

As the bank of the creek is stabilized through vegetative plantings and riprap, it will secure the soil and allow for other vegetation to establish and create habitat for numerous different species both on land and in the water below. Over time, as more vegetation establishes along the creek, it will not only increase habitat for wildlife species but will increase biodiversity in the area as well. Additionally, the vegetation will filter polluted runoff before entering the creek, improving the quality of water before it enters the larger aquatic system. As light penetration increases from improved water clarity, aquatic plant health and abundance will increase, enhancing the overall integrity of the aquatic ecosystem.

### Improved Water Quality

This project will improve the quality of water within the Pollywog Creek system and into the Caloosahatchee River. The creek bank is severely eroding, introducing sediments into the water which increases the cloudiness and hinders the ability of light to penetrate. Sediments can also introduce pollutants and excess nutrients into the system, which can lead to algae blooms, all of which negatively impact aquatic plants and animals. Therefore, stabilizing the creek bank decreases erosion and sedimentation entering the creek, which greatly improves water quality overall. Improved water quality upstream means improved water quality downstream, especially when entering the larger Caloosahatchee River system.

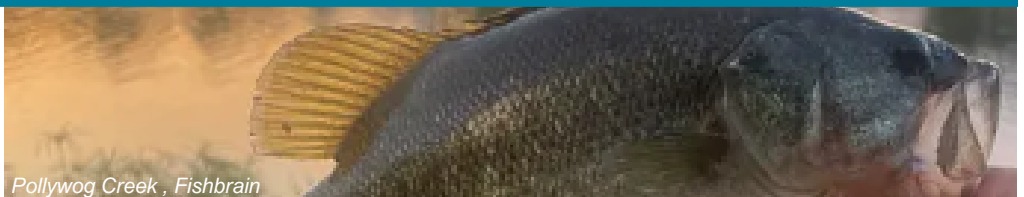
### Engaged Public

Activities will be aimed at engaging local community members and stakeholders throughout the design and permitting process. By engaging the public, it allows for educational opportunities to express the importance of water quality, ecosystem health, and increased community resiliency in the face of a changing climate.

## CONTACT INFORMATION

1050 Loveland Blvd., Suite D  
Port Charlotte, FL 33980  
(941) 833-6580

[CHNEP.org](http://CHNEP.org)



*Uniting Central and Southwest Florida to protect water and wildlife*