



# 2019 calendar

Thunderstorm over Pine Island Sound | Steve Russell

Charlotte Harbor National Estuary Program  
326 West Marion Avenue  
Punta Gorda, FL 33950-4417

 CHNEP.org  /CHNEP1995  /CHNEP.Florida

**WATER  
SAMPLES ON  
WATER ATLAS**  
670,484,415

**RIVERS IN CHNEP  
AREA**  
7  
• ESTERO  
• CALOOSAHATCHEE  
• PEACE  
• MYAKKA • SANIBEL  
• IMPERIAL • ORANGE

**OYSTERS GROWING  
ON CREATED  
OYSTER REEFS  
IN PEACE RIVER**  
300,258

**ENVIRONMENTAL  
PROFESSIONALS  
RECEIVED SCIENCE  
BASED TRAINING  
SINCE 2017**  
931

**VOLUNTEER  
HOURS  
DONATED  
SINCE  
2017**  
1,776

**ORGANIZATIONS  
SUPPLYING  
WATER QUALITY  
DATA TO WATER ATLAS**  
119

**ACRES OF  
HABITAT  
ACQUIRED OR  
RESTORED IN 2018**  
84,153

**WADING BIRD NESTS COUNTED  
IN CHNEP - FUNDED 2018 DRONE  
NEST SURVEY  
OF LENORE ISLAND  
IN CALOOSAHATCHEE RIVER**  
485

**HARBOR HAPPENINGS  
EDUCATIONAL MAGAZINES IN 2018**  
63,000

**FOR EVERY DOLLAR OF  
FEDERAL FUNDING  
\$123<sup>00</sup> : \$1<sup>00</sup>**  
RESTORATION PROJECTS  
ACHIEVED IN 2018

**SCIENTIFIC  
JOURNAL  
ARTICLES  
CO-AUTHORED BY THE  
CHNEP AND PUBLISHED  
IN 2018**  
2

**KIDS CHNEP  
FUNDED TO GO TO  
ENVIRONMENTAL CAMP OR  
ON WADING TRIPS IN 2018**  
558

**MICROPLASTIC  
WATER SAMPLES  
COLLECTED IN 2018**  
240

**SUPPORT THE CHNEP**  
 CHNEP.ORG

**CHNEP BY THE NUMBERS**



Charlotte Harbor National Estuary Program





# Charlotte Harbor National Estuary Program

Working together to protect water resources and the natural environment  
of Florida from Venice to Bonita Springs to Winter Haven

## CHNEP COMMITTEE MEMBERS & MAJOR FUNDERS



## ABOUT US

Formed in 1995, the Charlotte Harbor National Estuary Program (CHNEP) was designated by Congress to protect the exceptional estuaries and water resources in a 4,700 square mile area that includes the Peace, Myakka, Caloosahatchee, and Estero Rivers and the coastal waters of Dona and Roberts Bays, Lemon Bay, Charlotte Harbor, the Tidal Caloosahatchee, Pine Island Sound, and Estero Bay. CHNEP is non-regulatory, science and consensus-based, and is strongly supported by the state and local governments in its boundaries.

### PROGRAM PURPOSES

- To protect and restore swimmable fishable water quality throughout the CHNEP Study Area
- To restore healthy abundant fisheries and shellfish harvesting for commercial and recreational use
- To foster public-private partnerships with broad diverse stakeholders including industry, government, and non-governmental organizations for restoration
- To protect federal resources in our study area including 5 National Wildlife Refuges and numerous federally endangered species
- To leverage limited federal dollars with state and local funds, as well as private contributions, to implement more projects
- To provide environmental education experiences to youth and adult populations
- To support our regional tourism and real estate based economy tied to our water resources



## Charlotte Harbor National Estuary Program

326 West Marion Avenue  
Punta Gorda, FL 33950-4417  
941/575-5090 | Toll-Free 866/835-5785  
www.CHNEP.org

Executive Director: Jennifer Hecker | 941/575-3392 • [jhecker@chnep.org](mailto:jhecker@chnep.org)  
Finance and Grants Specialist: Danielle Berhel | 941/575-3390 • [dberhel@chnep.org](mailto:dberhel@chnep.org)  
Research and Outreach Specialist: Nicole Iadevaia | 941/575-3313 • [niadevaia@chnep.org](mailto:niadevaia@chnep.org)

© 2018 by Charlotte Harbor National Estuary Program  
Designed by Rebekah Harp, SWFRPC





Alligator at Six Mile Cypress Slough Preserve | Elaine Weissborn

# January 2019



Sunday	Monday	Tuesday	Wednesday	Thursday	Friday	Saturday
	A Morph of the Reddish Egret fishing for dinner <i>Liz Noffsinger, Liz Noffsinger Photography</i>	1NEW YEAR'S DAY  CHNEP office is closed.	2	3	4	5NEW MOON
6	7	8	9	10	11	12
13	14FIRST QUARTER	15	16	17	18	19
20	21FULL MOON MARTIN LUTHER KING JR. DAY  CHNEP office is closed.	22	23	24	25	26
27LAST QUARTER	28	29	30	31	 <div>CALENDAR OF CHNEP EVENTS <a href="http://chnep.org/events">chnep.org/events</a></div>	





Roseate Spoonbill at Circle B | Steve Griffin

# February 2019



Sunday	Monday	Tuesday	Wednesday	Thursday	Friday	Saturday
			 <div><p>Far Left: A Branch for a Heart-nest at the Venice Rookery <i>Norm Collin, PACC</i></p><p>Middle: Sunrise over Pine Island Sound by drone <i>Steve Russell</i></p><p>Left: Pelicans at Bokeelia <i>Edward Pelgrino</i></p></div>			
3	4 ● NEW MOON	5	6	7	8	9
10	11	12 ☾ FIRST QUARTER	13	14 VALENTINE'S DAY	15	16
17	18 PRESIDENT'S DAY	19 ○ FULL MOON	20	21	22	23
24	25 CHNEP office is closed.	26 ☾ LAST QUARTER	27	28	 <div>LEARN ABOUT YOUR WATERS <a href="http://chnep.wateratlas.usf.edu">chnep.wateratlas.usf.edu</a></div>	







Fishing on the Myakka River | Gary Warren

# March 2019



Sunday	Monday	Tuesday	Wednesday	Thursday	Friday	Saturday
		Far Left: Great Blue with Chicks <i>Maryle Barbé</i>  Left: Red shouldered hawk at Myakka River State Park <i>Barbara Presner-McKane</i>			1 GREAT AMERICAN CLEANUP MARCH 1- MAY 31	2
3	4	5	6 ● NEW MOON	7	8	9
10 DAYLIGHT-SAVING TIME BEGINS	11	12	13	14 ☾ FIRST QUARTER	15	16
17	18	19	20 ○ FULL MOON VERNAL EQUINOX	21	22	23
24 31	25	26	27	28 ☾ LAST QUARTER	29	30





Black-necked Stilts Family | Theresa Baldwin

# April 2019



Sunday	Monday	Tuesday	Wednesday	Thursday	Friday	Saturday
	1	2	3	4	5NEW MOON	6
7	8	9	10	11	12FIRST QUARTER	13
14	15	16	17	18	19FULL MOON	20
21	22EARTH DAY	23	24	25	26LAST QUARTER NATIONAL ARBOR DAY	27
28	29	30			<div><div>VISIT <a href="http://CHNEP.ORG">CHNEP.ORG</a> TO</div><div>SUBSCRIBE</div></div>	

Male Needham's Skimmer in CREW Land & Water Trust  
Dick Brewer





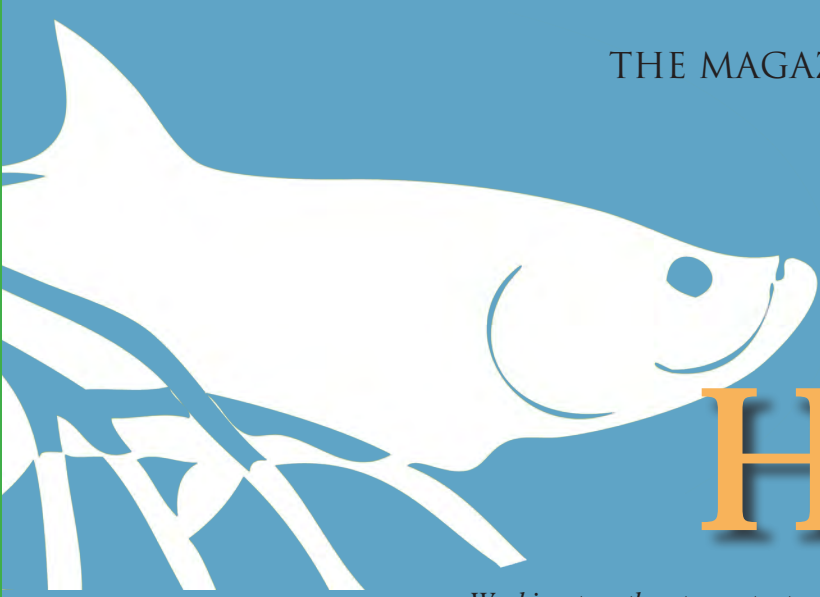
Deer in velvet at Babcock Ranch | Marc Pletcher, aged by the sea

May 2019



Sunday	Monday	Tuesday	Wednesday	Thursday	Friday	Saturday
		<div>Far Left: Three Juvenile Limpkins <i>Priscilla McDaniel</i></div> <div>Left: Pair of Blue Heron, Venice Rookery <i>Linda Thompson</i></div>	1SEA TURTLE SEASON BEGINS	2	3	4NEW MOON
5	6	7	8	9	10	11FIRST QUARTER
12	13	14	15	16	17	18FULL MOON
19	20	21	22	23	24	25
26LAST QUARTER	27MEMORIAL DAY  CHNEP office is closed.	28	29	30	31	<div>EXPLORE YOUR WATERSHED</div> <div> <a href="http://chnep.org/explore-your-watershed">chnep.org/explore-your-watershed</a></div>





# HARBOR HAPPENINGS

*Working together to protect water resources and the natural environment of Florida from Venice to Bonita Springs to Winter Haven*



## A Note from Our Executive Director

There's no doubt that this has been an exceptionally challenging year for our waters.

Battling pollution and harmful algae outbreaks, watching mass aquatic

life die offs and experiencing the economic, environmental, and human health toll has been exhausting and demoralizing for many of us.

Nonetheless, out of every crisis is an opportunity, an opportunity in galvanizing policymaker and public interest to educate and build support to protect and restore these critical resources. It reminds us we cannot take our waterways and quality of life for granted, it is something we must continually fight for.

That is just what the Charlotte Harbor National Estuary Program (CHNEP) is doing. We, together with our partners and volunteers, are doing everything we can to address this current

water quality crisis through numerous water quality monitoring, research, and restoration projects. We also educate, engage, and empower the public to be able to protect the resources in their own communities.

CHNEP is currently creating a regional science-based action plan, networking all the local, state, and federal governmental entities together with interested environmental and industry groups to collaboratively work on large-scale water quality and hydrological restoration projects and initiatives that reduce pollution and protect fish and wildlife.

Now, more than ever, we need to be all working together to combine our voices, knowledge, manpower, and resources to solving these issues. The CHNEP is uniquely positioned to support that, helping to carry our message to Tallahassee and Washington DC.

As famous ocean scientist Sylvia Earle once said, "There's plenty of water in the universe without life, but nowhere is there life without water." We need to redouble our efforts to protect and restore our waters like our lives depend on it, because in fact, they do. Join us by logging onto [CHNEP.org](https://www.chnep.org) today to learn more and get involved. Your volunteerism and donations really do make a difference.

Thank you for your support,

*Jennifer Hecker*

## A Closer Look at Harmful Algae Blooms

Harmful algae blooms (HABs) are overgrowths of algae in water. Some produce dangerous toxins in fresh or marine water, but even nontoxic blooms hurt the environment and local economies. Harmful algae blooms generally need sunlight, slow-moving water, and nutrients (nitrogen and phosphorus). Because HABs can produce toxins that can affect public health, it is important to learn about how to spot them and avoid waters where they are present.



### What is that green slime?

Some of our fresh waterways have a green slimy appearance. This can be from excessive blue-green algae growth, also known as cyanobacteria—a type of HAB.

Both regular green algae and blue-green algae/cyanobacteria can produce dense mats that can impede activities like swimming and fishing, and cause odor problems and oxygen depletion; however, cyanobacteria, unlike green algae, can produce toxins that affect aquatic life and human health. Cyanobacteria has been a major problem this year in local waterways such as the Caloosahatchee River and Cape Coral canals.

### What is "Red Tide"?

"Red tide" is another type of HAB formed from the excessive growth of *Karenia brevis*, a type of algae present in marine environments.



*Image courtesy of P. Schmidt, Charlotte Sun.*

It also can produce a toxin, which has been the case with the wide-spread red tide event we have had the past few months in Southwest Florida. As a result of the severe red tide we have been experiencing, there have been mass mortality of marine life and oxygen-deprived "dead zones" formed in our coastal waters.

### Why do animals get sick or die?

HABs lower the amount of oxygen in water, which inhibits the breathing of fish and other organisms who breathe underwater. Red tide toxins attack the nervous systems of the animals exposed to it—which can inhibit their swimming or surfacing to breathe (as manatees and sea turtles do). The toxins also go up the food chain, causing birds who eat poisoned fish to sometimes get sick or die.



### Where can I find more info. on HABs in my area?

National Oceanic and Atmospheric Administration  
HAB twice-weekly bulletins available at  
<https://tidesandcurrents.noaa.gov/hab/gomx.html>

Florida Fish and Wildlife Conservation  
Commission Red Tide Weekly Reports available at  
<http://myfwc.com/redtidestatus>

### What can I do?

Some of the things you can immediately do to help in addition to volunteering or donating are:

- Refrain from fertilizing during rainy season. Fertilizers containing nutrients often runoff yards into waterways before they can be absorbed with the frequent hard rainfalls we have this time of year. Plant Florida-friendly plants that do not require fertilizers.
- Get a professional to inspect your septic system, maintaining/repairing if need be. Failing septs are often leaching nutrients into waterways.
- Pick up your pet's waste and dispose of in a container so it does not wash nutrients or bacteria into nearby swales, canals, or stormwater drains.

To learn more, go to <https://www.chnep.org/harmfulalgaeblooms>





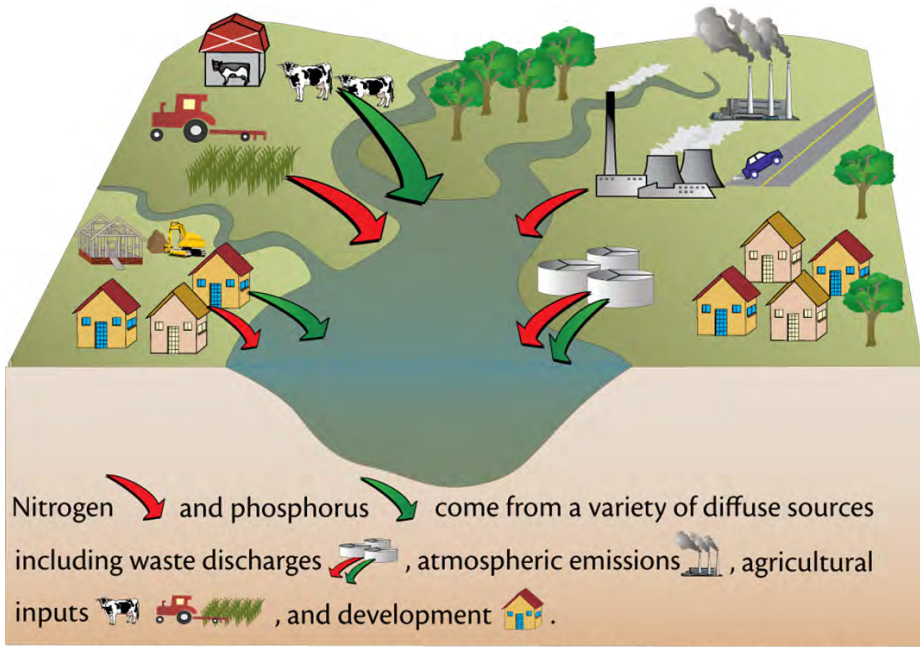
# Nutrient Pollution: Where Is It All Coming From?

Nutrients, nitrogen and phosphorus, are necessary for healthy rivers, lakes, and estuaries—feeding the plants and animals that inhabit them. However, just as we can get unhealthy and sick from too much food, waterways receiving too much nutrient matter can become unhealthy and contribute to harmful algae blooms (HABs). Often, the excess nutrients are entering from man-made sources and activities through stormwater, wastewater, and industrial runoff.

## Industrial Runoff

Various industries such as farming, ranching, and phosphate mining can result in nutrient pollution entering downstream waterways if their wastewater and runoff is not adequately captured and treated on-site.

The fertilizers that enhance agricultural production can sometimes wash into agricultural canals that often discharge to downstream flowing waterways or waterbodies. Ranching livestock creates animal waste rich in nutrients. Phosphate mining extracts natural phosphorus, a component often used in fertilizer production.



## Stormwater Runoff

Water running off parking lots, lawns, and other surfaces in residential and commercial areas often finds its way into nearby canals, rivers, and eventually into lakes and estuaries. This is called stormwater runoff and can carry nutrient pollutants generated from human activities (ex. uncollected pet waste, fertilizer, etc.).

## Wastewater Runoff

Human wastewater can also be a source of nutrient pollution. Municipal wastewater plants that are not treating to advanced wastewater treatment standards, do not have enough power back-up or storage to hold excess wastewater during storm events, or do not have alternate wastewater disposal locations can discharge nutrient-rich wastewater into downstream waters.

Additionally, septic tanks placed too low such that they are in the groundwater table or near surface waters, or that are not properly maintained and functional, can leak nutrient-rich wastewater into surface waters or groundwater that flows to surface waters.

*The Charlotte Harbor National Estuary Program has for many years funded and been a lead partner in the Watershed Education Training—Ponds, Lakes & Neighborhoods (WETPLAN) program, a program designed to assist homeowners interested in improving and caring for their neighborhood ponds and lakes. Planting guides, videos, and other free resources are available at [www.wetplan.org](http://www.wetplan.org).*

## Nature's Kidneys

At the same time we are adding man-made nutrient pollution to our waterways, we are also losing wetlands, seagrasses, and oysters — our natural water storage and treatment.

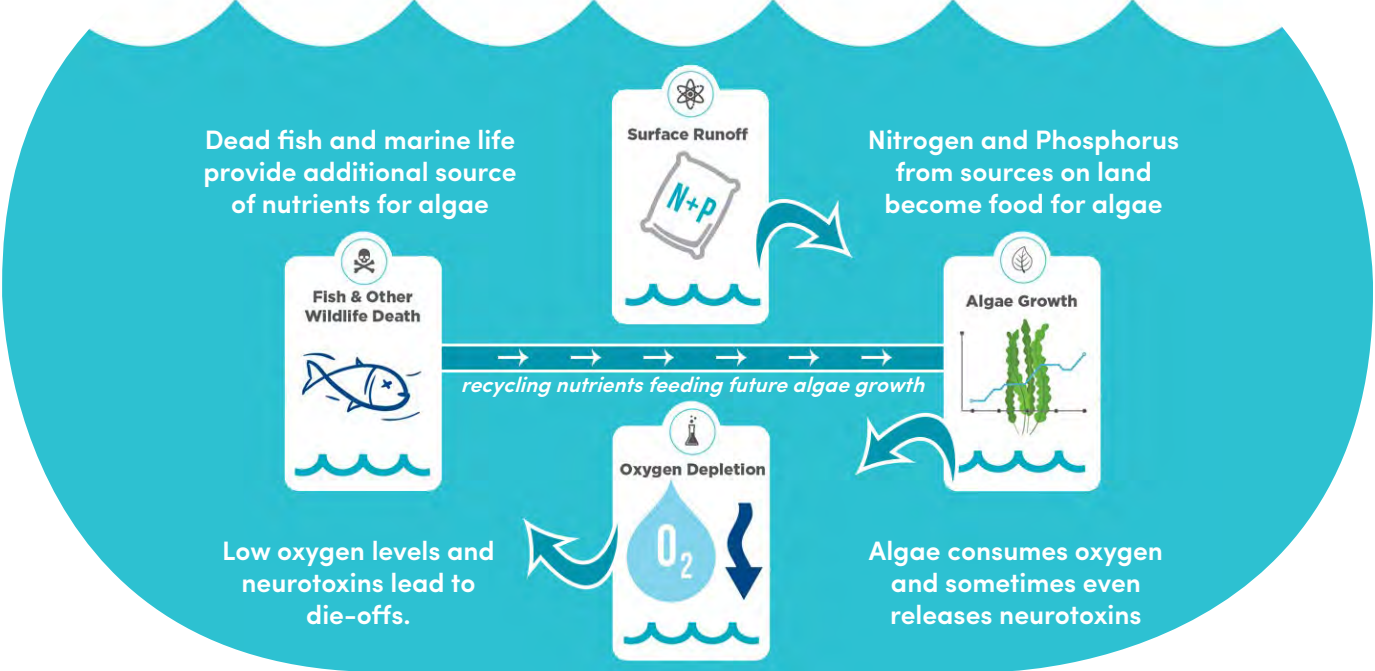
Wetlands act as nature's kidneys in uptaking nutrients, removing more than they generate. However, just as our kidneys can become overloaded and stop functioning well, wetlands can be overloaded from human pollution.

Oysters also naturally filter water, up to 50 gallons each per day! When we lose oysters from poor water management, we lose their kidney-like cleansing ability.

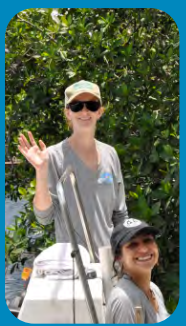
Seagrasses and other underwater plants uptake and utilize nutrients for their growth, providing habitat and cleaner water. However, nutrient pollution and excessive algae growth can block the light they need to survive.

This is why it is so important we take additional measures to protect the wetlands, seagrasses and oysters we have, as well as create and restore additional ones wherever possible.

## RAIN CARRIES NITROGEN AND PHOSPHORUS AS WELL AS PATHOGENS AND TRASH FROM LAND TO OUR RIVERS AND BAYS.



## CHNEP volunteers diving in to restore seagrasses and oysters.

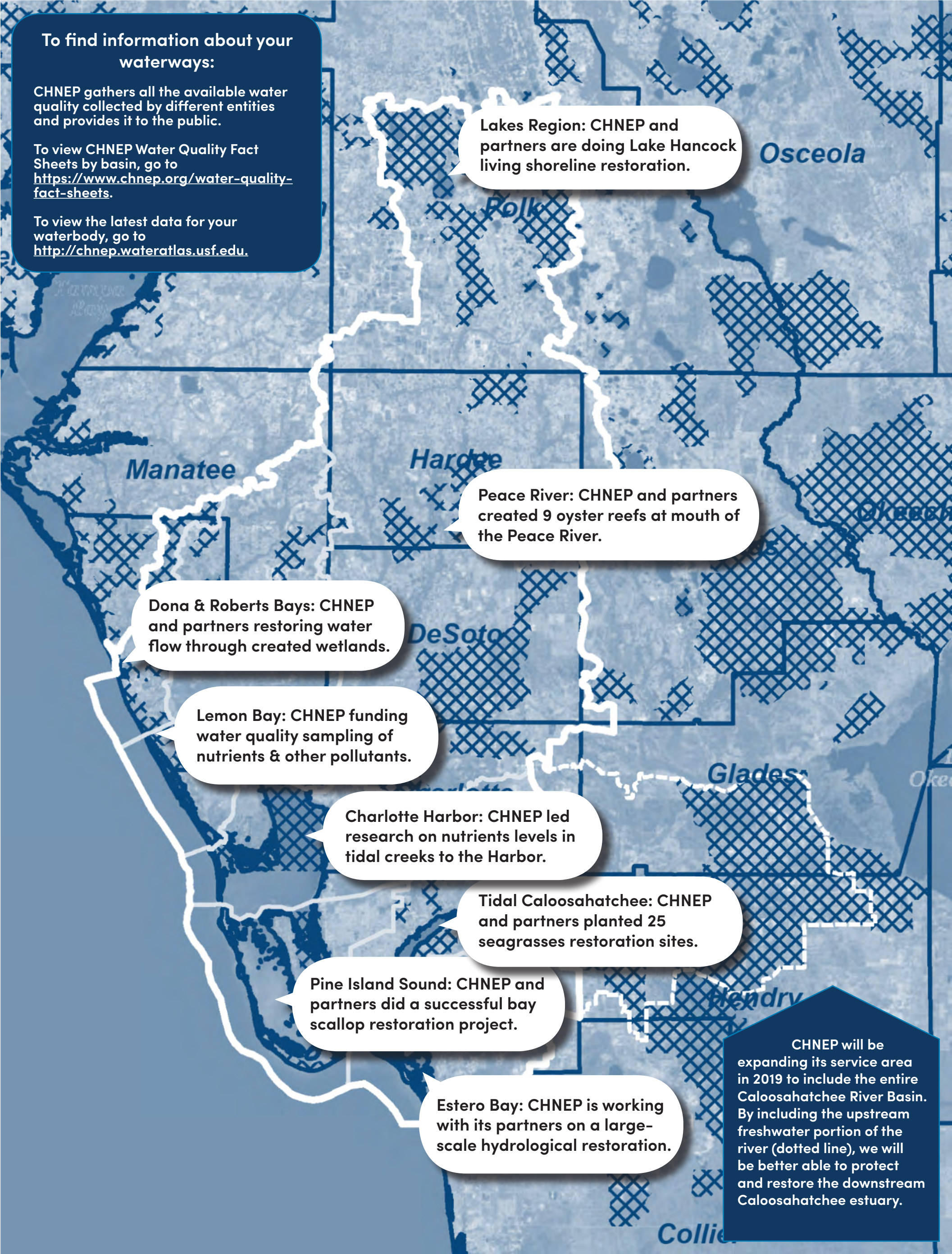




# Charlotte Harbor National Estuary Program

## Tackling Nutrient Pollution

There are wide-spread nutrient pollution problems throughout the 4,700 square mile program area from Venice to Bonita Springs to Winter Haven. More investments are needed for infrastructure that mimics nature (i.e. created wetlands, living shorelines, man-made oyster reefs, planted seagrasses, etc.), as well as engineered solutions (reservoirs, water management structures, created stormwater treatment areas, etc.) to reduce nutrient pollution. The CHNEP is working throughout our area to do projects that tackle nutrient-polluted waterways (shaded areas in map below are areas not meeting state water quality standards due to excess nutrient pollution).







Female Pig Frog in CREW Land & Water Trust | Dick Brewer, CREW Land & Water Trust

# June 2019



Sunday	Monday	Tuesday	Wednesday	Thursday	Friday	Saturday
			<div>Far Left: Hymenocallis Speciosa <i>Jenni Pelegrino</i></div> <div>Middle: Snake vs Bird <i>Nicole Cicchino</i></div> <div>Left: Ducklings Polk County Lake <i>Butch McDaniel</i></div>			<div>1</div> <div>HURRICANE SEASON BEGINS</div>
2	3 <div>NEW MOON</div>	4	5	6	7	8
9	10 <div>FIRST QUARTER</div>	11	12	13	14	15
16	17 <div>FULL MOON</div>	18	19	20	21 <div>SUMMER SOLSTICE</div>	22
23 <div>30</div>	24	25 <div>LAST QUARTER</div>	26	27	28	29





Fiery Sunset on Pine Island Sound | Sherri Talley

# July 2019



Sunday	Monday	Tuesday	Wednesday	Thursday	Friday	Saturday
	1	2NEW MOON	3	4INDEPENDENCE DAY  CHNEP office is closed.	5	6
7	8	9FIRST QUARTER	10	11	12	13
14	15	16FULL MOON	17	18	19	20
21	22	23	24LAST QUARTER	25	26	27
28	29	30	31NEW MOON	<div><div><div>2019 IMAGE CALENDAR DEADLINE visit <a href="http://chnep.org">chnep.org</a> for details</div></div></div>		


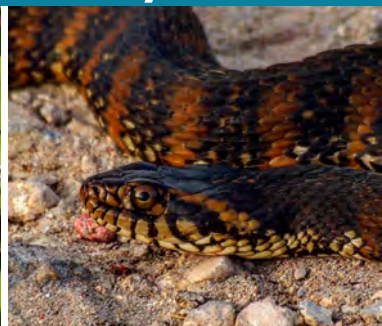






Tillandsia at Six Mile Cypress Slough Preserve | Elaine Weissborn

# August 2019



Sunday		Monday		Tuesday		Wednesday		Thursday		Friday		Saturday	
				<div>Far Left: Blowing in the Wind <i>Sue Killion</i></div> <div>Left: Banded Water Snake at Circle B Bar Reserve <i>Megan Drumheller, Drumheller Photography</i></div>				1		2		3	
4		5		6		7 		8		9		10	
11		12		13		14		15 		16		17	
18		19		20		21		22		23 		24	
25		26		27		28		29		30 		31	





Sunset at North Jetty in Venice | Joel Riloff

# September 2019



Sunday	Monday	Tuesday	Wednesday	Thursday	Friday	Saturday
1	2LABOR DAY  CHNEP office is closed.	3	4	5☾ FIRST QUARTER	6	7
8	9	10	11	12	13	14☉ FULL MOON
15	16	17	18WORLD WATER MONITORING DAY	19	20	21☾ LAST QUARTER COASTAL CLEANUP DAY
22	23AUTUMNAL EQUINOX	24	25	26	27	28● NEW MOON
29	30	Far Right: Black Belly Whistling Ducks Steve Griffin  Right: Green Treefrog, Myakka River Capt. Les Hill				
		 				





Flame Box Crab | Linda Moreau, Four O'clock Photos

# October 2019



Sunday	Monday	Tuesday	Wednesday	Thursday	Friday	Saturday
 Owlets   Nicole Cicchino	1	2	3	4	5 ☾ FIRST QUARTER	
6	7	8	9	10	11	12
13 ☉ FULL MOON	14	15	16	17	18	19
20	21 ☾ LAST QUARTER	22	23	24	25	26
27 ● NEW MOON	28	29	30	31 SEA TURTLE SEASON ENDS	<div>BECOME A Citizen <b>Scientist</b> SIGN-UP AT <a href="http://CHNEP.ORG">CHNEP.ORG</a></div>	





Monarch butterfly | Deb Kemmerer

# November 2019



Sunday	Monday	Tuesday	Wednesday	Thursday	Friday	Saturday
			<div>Far Left: Black Skimmers with their young <i>Ava Riloff</i></div> <div>Left: Indigo Bunting at Wildflower Preserve <i>Eva Furner</i></div>		1	2
3 DAYLIGHT-SAVING TIME ENDS	4 FIRST QUARTER	5	6	7	8	9
10	11 VETERANS DAY (OBSERVED)  CHNEP office is closed.	12 FULL MOON	13	14	15	16 CHARLOTTE HARBOR NATURE FESTIVAL
17	18	19 LAST QUARTER	20	21	22	23
24	25	26 NEW MOON	27	28 THANKSGIVING  CHNEP office is closed.	29  CHNEP office is closed.	30 HURRICANE SEASON ENDS








White Pelicans at Sunset | Liz Noffsinger, Liz Noffsinger Photography

# December 2019



Sunday	Monday	Tuesday	Wednesday	Thursday	Friday	Saturday
1	2	3	4  FIRST QUARTER	5	6	7
8	9	10	11	12  FULL MOON	13	14
15	16	17	18  LAST QUARTER	19	20	21 WINTER SOLSTICE
22	23	24                                                                                                                                                                                                                                                                                                                                                                                                                                                                                                                                                                                                                                                                                                                                                                                                                                                                                                                                                                                                                                                                                                                                                                                                                                                                                                                                                                                                                                                                                                                                                                                                                                                                                                                                                                                                                                                                                                                                                                                                                                                                                                                                                                                                                                                                                                                                                                                                                                                                                                                      				



## Calendar Sponsor



## Image Contributors

Names of those who submitted images within our Study Area include:

Ralph Allen, Theresa Baldwin, Maryle Barbé, Johan Bjurman, Dick Brewer, Carol Claus, Michael Chamberlin, Nicole Cicchino, Carol Claus, Norm Collin, Morgan C Cook, Cara Czecholinski, Megan Drumheller, Darbey Faber, Eileen Fonferko, Eva Furner, Nancy Glickman, Steve Griffin, Brandon Hill, Les Hill, Susan Hoffman, Martha Huard, Walt Ittenbach, Debora Kemmerer, Susan Killion, Delmas Kimmons, Rita Kimmons, Kathy Licciardi, Linda Thompson, Carole Martin, Butch McDaniel, Priscilla McDaniel, Robin Mett, Hans Mooyman, Linda Moreau, Barbara Morrison, Tom Mueller, Liz Noffsinger, Mo Palmer, Jenni Pelegrino, Edward Pelegrino, Debra Peterson, Jamie Pipher, Marc Pletcher, Jackie Pope, Barbara Presner-McKane, Colin Purrington, Ava Riloff, Joel Riloff, Marlene Roehm, Lisa R. Rogers, Steve Russell, Mitch Spence, Gary Stone, Scott Stone, Sherri Talley, Dwight Tracy, Gary Warren, Elaine Weissborn, Casey Williams, Elizabeth Wong, Linda Wroble

## CHNEP Donors

Thank you to all those who contributed to the CHNEP. Private donations \$50 or above are recognized below:

The Landings Fishing Club, Caroline Lee LeGette, Carolyn Perrone, Jane N. Pugh, Visiting Angels Florida West Coast, W. Ray Wagoner, Keith and Donna Waltz, Thomas Winter & Corrine Thwing, Dr. Timothy Wright

## CHNEP Volunteers

Laurie Ackerman, Burke Allen, Elaine Allen, Lauren Alvaro, Sandy Artman, John Barrington, Deanna Barrington, Arlene Beaumont, Ben Bledsoe, Carol Bledsoe, Channing Boswell, Bill Brickel, Leslie Brown, Stephen Brown, Gary Brownwell, Brent Buford, Leonard Cardone, Phyllis Cady, Ray Cady, Frank Campagne, Cindy Christel, Toni Clanton, Doug Cooke, Jane Cooke, Lynn Crain, Zack Diamond, Mary Dorey, Edie Driest, Max Eischers, Karen Feinen, Ann Fleming, Dominic Fortunato, Tricie Fogle, Sue Galvin, Kahla Gentry, Marilyn Gladish, Joshua Griffin, James Griffard, Lona Griffard, Allain Hae, Keith Hamlin, Hugh Havlik, Jeff Heck, Kevin Heck, Christopher Henry, Pamela Henry, Solemni Hernandez, Joan Herron San Lwin, Martha Hoover, Bill Hopkins, Caron Houston, Thomas James, Jim Kroy, Louise Kowitch, Meg Krieg, Zen Kurokawa, Judith Lancaster, Ernesto Lassa de la Vega, Karla Lewis, David Marshall, Ruth McGregor, Lorrie MacNail, Eleanor Marr, Shannon McGinnis, Chuck Millburg, Rodney Miller, David Moe, Michele Moe, Cooper Monroe, Max Monroe, Lincoln Monroe, Will Monroe, Carol Murphy, Terry Nelson, Sharon O'Connell, Edward Pelegrino, Justin Pelegrino, Jane Pali, Carl Peterson, Deb Peterson, John Phillips, Joy Purcell, Brad Quandt, Holley Rauen, Jamie Reynolds, John Reynolds, Chuck Richardson, Heather Robinson, Sage Robinson, Steve Robinson, Bobbi Rogers, Ricardo Rolon, Patricia Romaine, Holley Raven, Liza Rollins, Antonia Sabatini, Don Sabatini, Steve Sanders, Joan san Lwin, Stefan Scalvini, Patricia Schindler, Joan Sessions, Bob Scholtes, Debi Scholtes, Karin Shipman, Gavin Smith, Natalie Smith, Piper Smith, Sadie Smith, Liz Taggart, James Thomas, Bettina Thompson, James Tiztsarth, Linda Tragakis, Phillipe Trouillot, Michael Walters, Mike Weisensee, Charlie Wolley, Lauren Wolley, Bill Wood, Richard Zinn



## SUPPORT THE CHNEP

*Make a donation today!*

Help support the work of Charlotte Harbor National Estuary Program (CHNEP) by making a donation. To make a donation by credit card or PayPal, visit our website at [www.CHNEP.org](http://www.CHNEP.org). Make checks payable to the **Charlotte Harbor Estuary Program** and mail to **326 West Marion Avenue, Punta Gorda, FL 33950-4417**.



The CHNEP is pleased to provide you with this calendar in hopes that it will inspire you to do more to protect southwest Florida. Additional information about the CHNEP can be found throughout this calendar and at [www.CHNEP.org](http://www.CHNEP.org).

Below: Great Horned Owl and chick at Circle B Bar  
Joel Riloff



# 2020 CALENDAR

JANUARY

SU	MO	TU	WE	TH	FR	SA
			1	2	3	4
5	6	7	8	9	10	11
12	13	14	15	16	17	18
19	20	21	22	23	24	25
26	27	28	29	30	31	

FEBRUARY

SU	MO	TU	WE	TH	FR	SA
						1
2	3	4	5	6	7	8
9	10	11	12	13	14	15
16	17	18	19	20	21	22
23	24	25	26	27	28	29

MARCH

SU	MO	TU	WE	TH	FR	SA
1	2	3	4	5	6	7
8	9	10	11	12	13	14
15	16	17	18	19	20	21
22	23	24	25	26	27	28
29	30	31				

APRIL

SU	MO	TU	WE	TH	FR	SA
						1
			2	3	4	
5	6	7	8	9	10	11
12	13	14	15	16	17	18
19	20	21	22	23	24	25
26	27	28	29	30		

MAY

SU	MO	TU	WE	TH	FR	SA
						1
			2			
3	4	5	6	7	8	9
10	11	12	13	14	15	16
17	18	19	20	21	22	23
24	25	26	27	28	29	30
31						

JUNE

SU	MO	TU	WE	TH	FR	SA
						1
		2	3	4	5	6
7	8	9	10	11	12	13
14	15	16	17	18	19	20
21	22	23	24	25	26	27
28	29	30				

JULY

SU	MO	TU	WE	TH	FR	SA
						1
			2	3	4	
5	6	7	8	9	10	11
12	13	14	15	16	17	18
19	20	21	22	23	24	25
26	27	28	29	30	31	

AUGUST

SU	MO	TU	WE	TH	FR	SA
						1
2	3	4	5	6	7	8
9	10	11	12	13	14	15
16	17	18	19	20	21	22
23	24	25	26	27	28	29
30	31					

SEPTEMBER

SU	MO	TU	WE	TH	FR	SA
						1
		2	3	4	5	
6	7	8	9	10	11	12
13	14	15	16	17	18	19
20	21	22	23	24	25	26
27	28	29	30			

OCTOBER

SU	MO	TU	WE	TH	FR	SA
						1
			2	3		
4	5	6	7	8	9	10
11	12	13	14	15	16	17
18	19	20	21	22	23	24
25	26	27	28	29	30	31

NOVEMBER

SU	MO	TU	WE	TH	FR	SA
						1
		2	3	4	5	6
7	8	9	10	11	12	13
14	15	16	17	18	19	20
21	22	23	24	25	26	27
28	29	30				

DECEMBER

SU	MO	TU	WE	TH	FR	SA
						1
			2	3	4	5
6	7	8	9	10	11	12
13	14	15	16	17	18	19
20	21	22	23	24	25	26
27	28	29	30	31		

## ONE DAY PASS

Entry into any Florida State Park  
Good for one vehicle, up to 8 people

Except at Ellie Schiller Homosassa Springs Wildlife State Park and Weeki Wachee Springs State Park, where the pass is good for two people. Does not include Skyway Fishing Pier State Park, camping or other fees.

[www.FloridaStateParks.org](http://www.FloridaStateParks.org)



[facebook.com/flstateparks](https://www.facebook.com/flstateparks)

[twitter.com/flstateparks](https://twitter.com/flstateparks)

[Pinterest.com/flstateparks](https://www.pinterest.com/flstateparks)

[instagram@Fl.StateParks](https://www.instagram.com/Fl.StateParks)



Bill Baggs Cape Florida State Park