



HUNGRY IMMATURE HERONS | Lynn Berreitter, Berreitter Photography & Gallery



LOGGERHEAD SEA TURTLE HATCHLING | Turtle Time, Inc.



SPOONBILL LANDING, VENICE | Eva Furner



ALLIGATOR, HARDEE COUNTY ANIMAL REFUGE | Sheri Judah



BALD EAGLE, CHARLOTTE COUNTY | Bill Cale

## CHARLOTTE HARBOR NATIONAL ESTUARY PROGRAM owes a special thanks to:

- Volunteers who serve on the CHNEP Policy, Management, Technical Advisory and Citizens Advisory committees.
- The CHNEP financial partners, including the U.S. Environmental Protection Agency, Southwest Florida Water Management District, South Florida Water Management District, Florida Department of Environmental Protection, Peace River/Manasota Regional Water Supply Authority, Southwest Florida Regional Planning Council, the counties of Polk, Sarasota, Manatee, Lee, Charlotte, DeSoto and Hardee, and the cities of Sanibel, Cape Coral, Fort Myers, Punta Gorda, North Port, Venice, Fort Myers Beach and Winter Haven.
- Those who submitted entries of the beauty found within the greater Charlotte Harbor watershed. Entries were submitted by:

Aaron Adams, Thomas Allen, Stephen D. Ambers, Trent Anthony, Janell Armstrong, Arden Arrington, Bob Bachand, Theresa Baldwin, Maryle Barbé, Brett Beckman, Lynn Berreitter, Sarah Biggs, Becky Bragg, Malcolm Brenner, Cole Brewer, Paul Brooke, Wayman E. Brown, Bill Cale, Carie L. Call, Daniel Calvert, Patrick Casey, Missy L. Christie, Lisa Dean Conder, James Courtright, Ginger Cristina, Pamela Davis, Charlie Diemer,

Kevin T. Edwards, Eileen Fonferko, Darlene Foster, Eva Furner, Kathy Y. Futch, Dennis Girard, Andy Glogower, Miranda Goodman, Brian Grant, Kathy Ann Gregg, James Hagler, Eve M. Haverfield, John Hazard, Justin Heller, Jane Hilton, Jacqueline Hollister, Amy Hoyt, MaryAnn Hughes, Bernard Hynes, Brie Jamison, Barbara Jones, Sheri Judah, Rosalie Kreulen, Thomas Kreulen, Cliff Langenbach, Evelyn Loeffler, Perry Loeke, Carol Mac Dougall, Carol Mahler, Carissa Mann, James Mathisen, William McSharry, Hank Mendenhall, Hans Mooyman, Misty Nabers Nichols, G.M. (Jerry) Nelson, Diana Odegard, Joe Ortolona, Anthony Pignone, Glenn Pittard, Chuck Radloff, Glenys Radloff, Jean Salins, Melynda Schneider, Linda H. Soderquist, Jeffrey Spence, Lynette Spence, Ruth Spies, Stuart Stauss, Celia Stearns, Jeanne Tyrer, Sally Weigand, Florene M. Welebny, Mary F. Widmer, J. Michael Wilhelm and Thomas Zinneman.

- Those who visited the website at [www.CHNEP.org](http://www.CHNEP.org) to select images they wished to appear in the calendar.
- The companies that helped produce this calendar: The Set Up, Inc. for design, ClickSurvey for the online survey and Direct Impressions for printing.



Charlotte Harbor National Estuary Program  
1926 Victoria Avenue, Fort Myers, Florida 33901-3414

October 2007

*The Charlotte Harbor National Estuary Program is a partnership working to protect the natural environment from Venice to Bonita Springs to Winter Haven. The CHNEP is pleased to provide you with this 2008 calendar in hopes that it will inspire you to do more to protect southwest Florida.*

*The CHNEP asked people to submit up to three images – of any medium created anytime – of the beauty of the natural environment found in the greater Charlotte Harbor watershed. We then asked you to take an online survey to select from the images submitted those you would like included in the calendar. The result is this calendar.*

*We encourage you to enjoy the calendar this year and to frame images to enjoy once the year is over. If you do not wish to use this calendar, please give it away. Once the year is over, please consider donating the calendar to a teacher for classroom projects.*

*This calendar is mailed to subscribers of the CHNEP's free newsletter Harbor Happenings. Copies are also available for pickup at select locations throughout the watershed and at select events. If you are not already receiving Harbor Happenings, please subscribe to stay in touch and learn about the many "happenings" in the greater Charlotte Harbor watershed.*

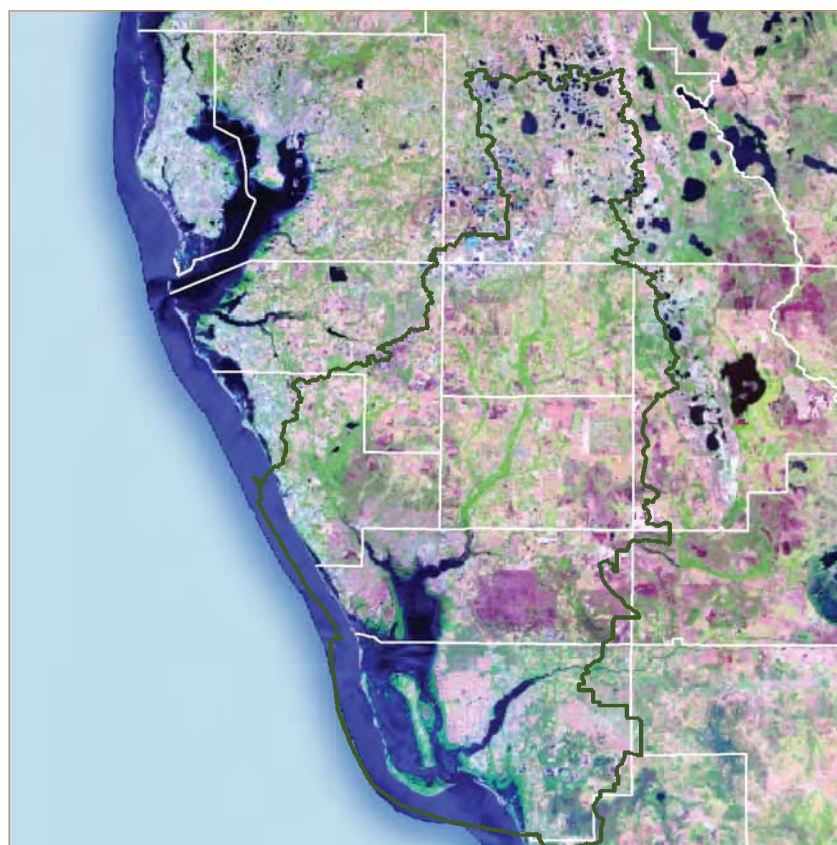
**WHAT DO YOU THINK?**  
Please take a few minutes now to let us know what you think of this calendar by completing an evaluation found at [www.CHNEP.org](http://www.CHNEP.org). Your response will help determine if a 2009 calendar will be produced. The decision to produce the program's fifth annual calendar will be made in May 2008.

**BY JULY 14, 2008,** the CHNEP encourages you to submit up to three images that capture the beauty of the natural environment found within the CHNEP study area for the 2009 calendar. The images could have been captured by the young or old, amateur or professional, today or 50 years ago and in any medium (photography, oil, illustration, etc.). The goal is that the 2009 calendar will depict the diversity of the natural environment found within this geographic area, which may include rivers, streams, estuaries, native plants and native wildlife.

**IN AUGUST 2008,** we will ask you to select the images that you believe best depict the beauty of the estuaries and watersheds in the CHNEP study area. The calendar will then be distributed by November.

## Charlotte Harbor National Estuary Program

Working together to protect the natural environment from Venice to Bonita Springs to Winter Haven



**CHARLOTTE HARBOR NATIONAL ESTUARY PROGRAM**  
1926 Victoria Avenue, Fort Myers, FL 33901-3414  
239/338-2556 TOLL-FREE 866/835-5785  
FAX 239/338-2560  
[www.CHNEP.org](http://www.CHNEP.org)

**LISA BEEVER**, Ph.D., Director  
Extension 235 EMAIL [lbeever@swfrpc.org](mailto:lbeever@swfrpc.org)

**MARAN BRAINARD HILGENDORF**,  
Communications Manager  
Extension 240 EMAIL [mhilgendorf@swfrpc.org](mailto:mhilgendorf@swfrpc.org)

**CATHERINE CORBETT**, Senior Scientist  
Extension 241 EMAIL [ccorbett@swfrpc.org](mailto:ccorbett@swfrpc.org)

**LIZ DONLEY**, Deputy Director  
Extension 234 EMAIL [ldonley@swfrpc.org](mailto:ldonley@swfrpc.org)

SATELLITE PHOTO | FWC Marine Research Institute

*Working together to protect the natural environment from Venice to Bonita Springs to Winter Haven*

©2007 by Charlotte Harbor National Estuary Program  
Developed and written by Maran Hilgendorf.

GREAT BLUE HERON BRINGING NESTING MATERIAL TO MATE | Lynn Berreitter, Berreitter Photography & Gallery

AMERICAN OYSTERCATCHER FEEDING ON FORT MYERS BEACH | Eva Furner

LIMPKIN | Innerglow Photography by Andy Glogower

PEACE RIVER | Perry James Photography

WOOD STORK, PEACE RIVER | Bernard Hynes

