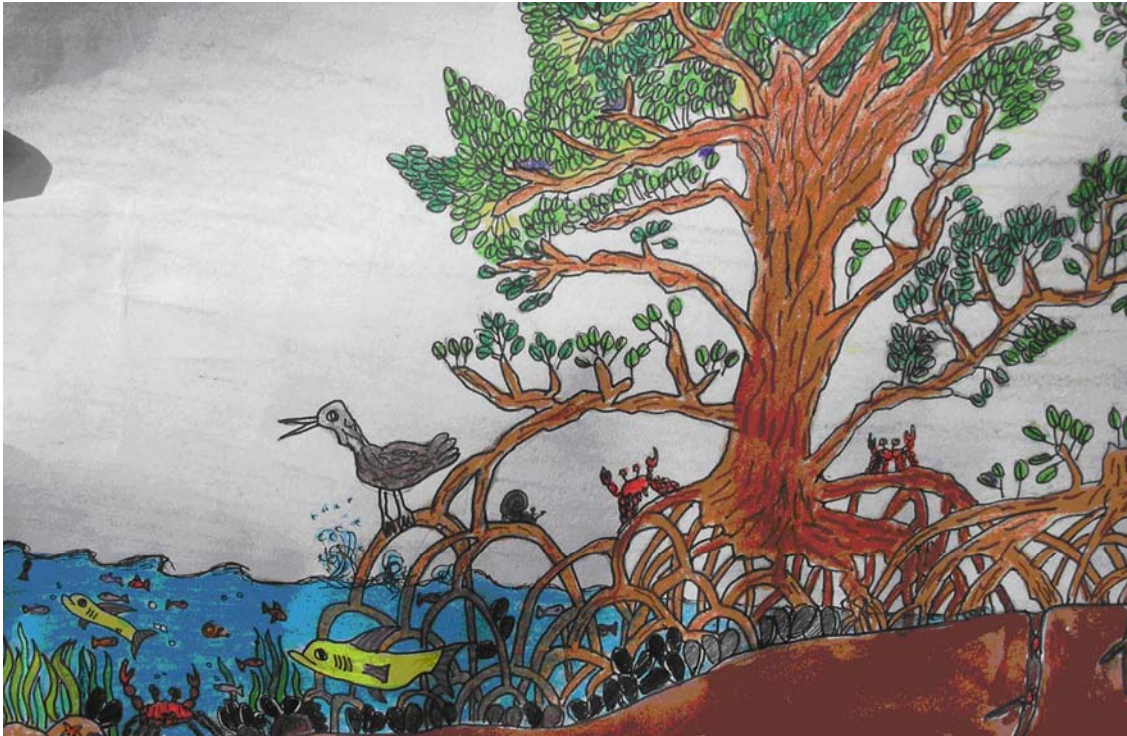


# FISCAL YEAR 2007 WORKPLAN



Richard Forensky, 8th grade student at Port Charlotte Middle School, 2005

## **Charlotte Harbor National Estuary Program**

### **Technical Report 06-2**

**Approved: May 15, 2006**

**Revised August 21, 2006; November 20, 2006**



1926 Victoria Avenue  
Fort Myers FL 33901  
(239) 338-2556

[www.CharlotteHarborNEP.org](http://www.CharlotteHarborNEP.org)

The Charlotte Harbor National Estuary Program is a partnership of citizens, elected officials, resource managers and commercial and recreational resource users working to improve the water quality and ecological integrity of the greater Charlotte Harbor watershed. A cooperative decision-making process is used within the program to address diverse resource management concerns in the 4,400 square mile study area. Many of these partners also financially support the Program, which, in turn, affords the Program opportunities to fund projects such as this. The entities that have financially supported the program include the following:

U.S. Environmental Protection Agency  
Southwest Florida Water Management District  
South Florida Water Management District  
Florida Department of Environmental Protection  
Florida Coastal Zone Management Program  
Peace River/Manasota Regional Water Supply Authority  
Polk, Sarasota, Manatee, Lee, Charlotte, DeSoto, and Hardee Counties  
Cities of Sanibel, Cape Coral, Fort Myers, Punta Gorda, North Port, Venice,  
Fort Myers Beach, and Winter Haven  
and the Southwest Florida Regional Planning Council.

# Charlotte Harbor National Estuary Program

## Policy Committee

### **Mr. Tom Welborn, Co-Chair**

Branch Chief, Wetlands, Coastal, & Water Quality  
U. S. Environmental Protection Agency, Region 4

### **Mr. Jon Iglehart, Co-Chair**

Acting South District Director  
Florida Department of Environmental Protection

### **CITIES**

#### **Hon. Rue Berryman**

City of North Port

### **COUNTIES**

#### **Mr. Lex Albritton**

Hardee County

### **AGENCIES**

#### **Hon. John Albion**

Southwest Florida Regional Planning Council

#### **Hon. Yvonne Brookes**

City of Winter Haven

#### **Hon. Adam Cummings**

Charlotte County

#### **Mr. Jim Beever**

Florida Fish & Wildlife Conservation Commission

#### **Mr. Martin Black**

City of Venice

#### **Hon. Patricia Glass**

Manatee County

#### **Brig. Gen. Rufus C. Lazzell (U.S. Army, ret.)**

Southwest Florida Water Management District

#### **Hon. Richard Ferreira**

City of Bonita Springs

#### **Hon. Ray Judah**

Lee County

#### **Mr. T. M. Gurr**

Central Florida Regional Planning Council

#### **Ms. Connie Jarvis**

City of Cape Coral

#### **Mr. Jeffrey Spence**

Polk County

#### **Ms. Carla Palmer**

South Florida Water Management District

#### **Hon. Andy Laurent**

City of Bartow

#### **Hon. Jon Thaxton**

Sarasota County

#### **Hon. Don Massucco**

Town of Fort Myers Beach

#### **Vacant**

Desoto County

#### **Mr. Joe Ortolona**

City of Fort Myers

#### **Hon. Dr. David Phelen**

City of Punta Gorda

#### **Hon. Tom Rothman**

City of Sanibel

## Management Committee Co-Chairs

### **Mr. Bo Crum, Co-Chair**

Section Chief, Wetlands, Coastal, & Water Quality  
U. S. Environmental Protection Agency, Region 4

### **Mr. Ken Heatherington, Co-Chair**

Planning Director  
Southwest Florida Regional Planning Council

## Technical Advisory Committee Co-Chairs

### **Ms. Judy Ott, Co-Chair**

**Mr. Mike Gurr, Co-Chair**

## Citizens Advisory Committee Officers

### **Mr. Stuart Stauss, Co-Chair**

**Mr. Kayton Nedza, Co-Chair**

## Staff

**Dr. Lisa B. Beever**, Director

**Ms. Catherine Corbett**, Senior Scientist

**Ms. Elizabeth S. Donley, Esq.**, Grants and Contracts Manager

**Ms. Maran Brainard Hilgendorf**, Communications Manager

# Table of Contents

Purpose and EPA Guidance .....	5
Summary of Program Accomplishments .....	6
Calendar Year 2005 .....	6
Programmatic and Environmental Accomplishments .....	6
2006 Goals Achieved.....	11
Major goals/focus for 2007 .....	11
Priority Changes.....	12
FY 05/06 Travel.....	13
Workplan Projects for FY 06/07 .....	14
Task 1: Management Conference and Administration .....	14
Task 2: Public Outreach.....	18
Task 3: Research.....	24
Task 4: Restoration .....	28
Task 5: Advocacy and Legislative Action.....	33
Administrative and Financial .....	42
Description of Grants.....	42
List Staff and Descriptions.....	49
Table 4: Total Leveraged (October 1, 2005-March 31, 2006).....	50
Travel Documentation .....	51
Workplan Budget .....	52
Income.....	52
FY 06/07 Budget.....	53

# Purpose and EPA Guidance

This document provides annual financial and task-based information to meet federal workplan requirements. The focus of this workplan continues to be the implementation of the Comprehensive Conservation and Management Plan (CCMP).

On March 4, 2002, Suzanne Schwartz, Director for of the Oceans and Coastal Protection Division of the Environmental Protection Agency (EPA) issued guidance for the development of the FY 03 Workplans prepared by the nation's NEPs. For ease of use, new requirements were shown in bold text. New guidance requirements included special grant condition regarding the use of travel funds and Government Performance and Results Act (GPRA) reporting. NEPs are also to have an Implementation Tracking System, Environmental Progress Report and Environmental Indicators in place by the next Implement Review in FY 2004 (FY 05 for Charlotte Harbor NEP). Furthermore, addition information (success stories) is expected for accomplishments of the past year. According to the guidance, NEP Workplans must include the following items:

## Goals and Accomplishments

1. A description of program accomplishments (programmatic, environmental, etc.) and transferable success stories made during the past year;
2. A discussion of which goals were achieved;
3. Discussion of major goals/focus for the coming year and any changes in priorities;

## Ongoing Projects

4. Status of projects that are ongoing from previous year. This shall include a summary of the deliverables and associated milestones or completion delivery dates, project name or CCMP action, the cost, and organization responsible;

## New Projects

5. A description of new projects, activities, or products to be produced in coming year(s) to meet those goals, a discussion of how they are linked to CCMP action plans or seven purposes of section 320, milestones and/or completion/delivery dates for new tasks, cost of the project, activity, or product, and the source of funds to carry it out;
6. Organization responsible for each new project/activity/product and the role of any partners in their development/use;

## Administrative and Financial

7. List of staff and description of their responsibilities/activities;
8. A description of Grants provided from the NEP to local entities. This should include the amount provided, organization conducting the work, purpose, deliverables, and completion dates;
9. Total funds leveraged (section 320 and others) and their source;
10. The non-Federal cost share (match) and its source (specify in-kind or cash from particular entity; if in-kind, indicate type - e.g., office space); if staff, please specify individual, their position and employer, and an estimated dollar value of their contribution to the match; and
11. Travel Documentation.

# Summary of Program Accomplishments

## Calendar Year 2005

This section corresponds to parts 1 through 3 of the EPA Workplan Guidance.

### Programmatic and Environmental Accomplishments

#### Management Conference

The Management Conference is cited as the most important function of the CHNEP. It is composed of Policy, Management, Technical, and Citizen Committees. In support of the Management Conference function, the CHNEP prepared and implemented the first year of a task-based budget with specific deliverables.

#### CCMP Update

The CHNEP adopted a procedure to update its Comprehensive Conservation and Management Plan (CCMP) every five years. With the EPA approval of the CCMP, in 2001, the CHNEP expects to complete its CCMP update in 2006. In support of this work, the CHNEP completed the following activities:

- Established a Citizens Advisory Committee (CAC) subcommittee devoted to developing recommendations for a new priority problem area entitled “Stewardship Gaps.”
- Developed and administered a survey to select priorities from a list of alternative actions and needs. Alternative actions were developed from the 2004 CCMP Gaps and Priorities Analysis, brainstorming by the Technical Advisory Committee (TAC) and CAC subcommittees, and a Call of Recommendations.
- Analyzed survey results from 69 survey respondents to begin selecting objectives and actions with a broad following throughout the Management Conference.

#### Outreach

The CHNEP is continuing the publication of its newsletter, *Harbor Happenings*, and its web site. The newsletter provides information on a wide variety of topics including latest research findings, restoration accomplishments, changes in legislation, upcoming events, and information about CHNEP’s partners including the water management districts. CHNEP staff and committee members have provided presentations at a variety of venues and on a variety of topics. The CHNEP has hosted, or otherwise provided funding to support, a variety of workshops and events including:

- CHNEP and WGPU held “Florida Friendly Workshops” in Wauchula on June 15, 2005 with 20 people in attendance, and on June 1 and July 29, 2005 in Arcadia with 46 and 56 people attending respectively. More than \$25,000 in free advertising for the events was provided by WGPU-TV. Because of the success of these workshops, Southwest Florida Water Management District provided an additional \$3,200 to hold hands-on workshops in Arcadia and Wauchula, this time with South Florida Community College hosting the workshops on November 15, 2005 in Arcadia and February 13, 2006 in Wauchula with 100 and 50 people attending. These too was deemed successes so SWFWMD pledged additional funds to hold two more workshops at SFCC campuses in Arcadia and Wauchula that will be held in November 2006.
- Over 29 different National Estuaries Days events were offered between September and November to highlight the importance of estuaries through fun and educational programs

such as festivals, guided walks, paddling and boat tours. More than 500 people participated.

- Five two-minute videos were produced by WGPU Public Media, the PBS station located in the NEP study area, on estuaries (2004), watersheds/stormwater runoff (2004) and native animals (2005), seagrasses (2006) and mangroves (2006). Each video is regularly broadcast by WGPU. Prior to March 2006 the first have been shown more than 800 times and the third more than 225 times. Once the series of five are complete the NEP office will make them available for additional broadcast by local government access channels and others broadcast services.
- *Charlotte Harbor Watershed Summit 2005: Transferring Science to Resource Management* on February 14-17, 2005. The Summit included a special day devoted to the Myakka River. The proceedings from this technical workshop will be published in a special issue of the *Florida Scientist* anticipated in the Summer 2006.
- A 2005 calendar was developed from images submitted by 43 people who had captured the beauty of the natural environment. These images were posted on the Program web site where more than 500 people selected images they wanted included in the calendar. The calendar was developed to help remind people of the natural beauty of the environment, to promote awareness of and involvement in the CHNEP, to reach the artistic community, to promote the newsletter *Harbor Happenings* and to offer prints that can be framed as smaller posters. The 10,000 calendars were mailed to subscribers of *Harbor Happenings* and were distributed at events, libraries, nature centers and other locations throughout the region.
- Wading trips are offered 35-36 times a year by five different environmental organizations throughout the review period. We provide incentives for our partners to have more than 10 participants on each trip and those participants complete a survey. The wading trips are promoted by the Program on its web site and in issues of *Harbor Happenings*. More than 500 people participated in a wading trip in 2005.
- With NEP support, the Peace River Environmental Education Network (PREEN) was developed as an umbrella organization located in the northern portion of the NEP watershed that represents 35 organizations. PREEN now conducts regular meetings/workshops.

### **Data Management**

- The Southwest Florida Regional Planning Council developed an ArcIMS website for the program at <http://www.swfrpc.org/chnepgis.htm>. This website allows the program to distribute Shapefiles that we produce and those of our partners online. Very convenient!
- The excellent website at [www.CharlotteHarborNEP.org](http://www.CharlotteHarborNEP.org) continues to provide news, documents, and information. Communications manager Maran Hilgendorf keeps the site updated. Rather than look for items in our files, staff uses the website to access CHNEP information. That's how good it is! In April 2005 the domain name [www.CHNEP.org](http://www.CHNEP.org) was added and the web site host changed. This change allows for more flexibility, such as use of on-line forms, and reduces the cost of the service to 10 percent of what it had been! The site is accessed between 4,000 and 5,000 times each month.
- The CHNEP provided funding to the Charlotte Harbor Environmental Center (CHEC) to expand the excellent water quality mapping program funded by the Southwest Florida Water Management District (SWFWMD) to the southern waters of the CHNEP. The CHEC posts results from monthly water quality data collected by the Coastal Charlotte Harbor Monitoring Network and Charlotte Harbor Estuaries Volunteer Water Quality

Monitoring Network using spatial analysis at:

[www.checflorida.org/chec/waterquality.htm](http://www.checflorida.org/chec/waterquality.htm).

- The CHNEP posts a quarterly environmental summary reviewing the environmental health of the estuaries starting December 2003 from secondary data sources.
- Conservancy of Southwest Florida prepared an Environmental Report Card. CHNEP expanded the scope of their work to include Lemon Bay and Coastal Venice. The summary can be found at: <http://www.conservancy.org/EstuariesReportCard.pdf>. The entire 203-page technical document can be found at: <http://www.conservancy.org/>
- *Environmental Indicators for the Charlotte Harbor National Estuary Program*, Technical Report 05-1 was adopted May 16, 2005.

## Research

The CHNEP conducts research through partners, contractors, and by staff. The wide variety of research fills gaps in knowledge related to hydrologic alterations, water quality degradation, and habitat loss. Research projects are chosen from a Research Needs Inventory adopted in 2004.

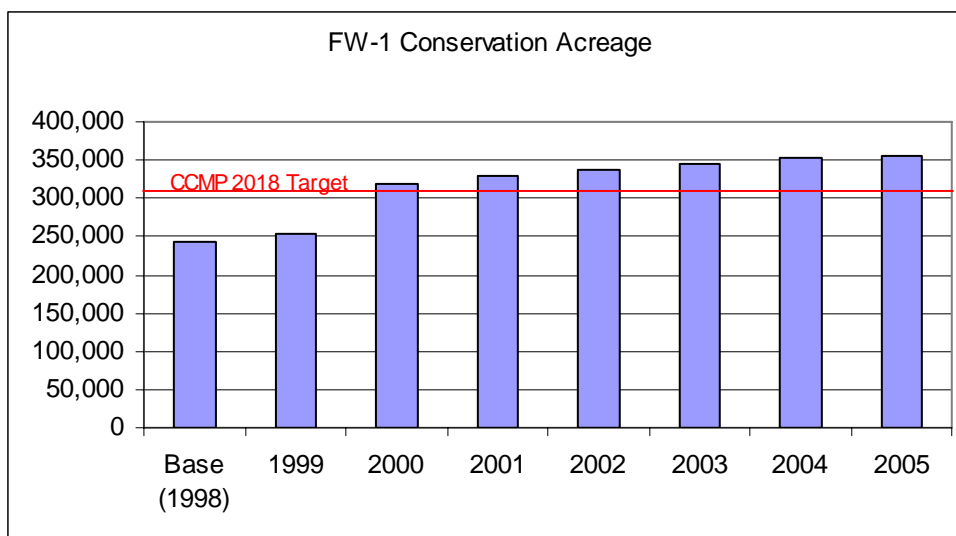
Completed elements of the CHNEP research program include:

- Completed Coastal Charlotte Harbor Monitoring Network field audit for Sanibel, Cape Coral, Fish and Wildlife Research Institute, and Lee County.
- Water Quality impairments GIS coverages are updated to provide scientists, citizens, and decision-makers with picture of water quality impairments across the landscape.
- GES, Inc. was contracted to develop methods to upload Coastal Charlotte Harbor Monitoring Network random-sample water quality data into EPA's STORET separate from agencies' other data. This work has been completed, including training of various partners to use these methods and data through 2005 uploaded into EPA's STORET. The final report was submitted that describes the protocols each entity will follow to upload data into STORET.
- CHNEP is providing annual funding to staff the Charlotte Harbor Estuaries Volunteer Water Quality Monitoring Network (CHEVWQMN). This network provides valuable data by sampling many areas of the coastal Charlotte Harbor at one time on the same date and by involving citizens in the collection.
- NEP staff completed a status and trends analysis of seagrass aerial extent for the special issue of *Florida Scientist*. The article lists coverage data by Upper and Lower Charlotte Harbor regions and by 13 seagrass segments and analyses the data for trends. Analyses did not detect trends in Upper or Lower Charlotte Harbor regions from 1982-2003. However, several seagrass segments did demonstrate trends in coverage and/or polygon classifications.

## Restoration

CHNEP has participated in a variety of restoration projects including:

- CHNEP staff completed the final draft of the Lower Charlotte Harbor SWIM Plan Reconnaissance Report, under a contract with South Florida Water Management District.
- A GIS mapped with linked database was completed for the CHNEP study area and the Southwest Florida Feasibility Study through the efforts of a wide-variety of partners. Over 1,000 different restoration projects have been identified and will serve to prioritize restoration needs.
- FW-1 (land stewardship) analysis by basin was developed and is now driven by GPRA numbers. We have exceeded our target by 80% or over 50,000 acres of conservation land. Conservation efforts have increased lands under stewardship by nearly 50% between 1998 and 2005.



- CHNEP is also involved in Everglades Restoration. Director Lisa Beever was appointed by the Governor to the Science Coordination Group who reports to the Everglades Restoration Task Force. Director Beever is also Co-Chair of the Southwest Florida Regional Restoration Coordination Team.

### Advocacy and Review

From time to time, CHNEP advocates positions to protect the watershed and estuaries. Toward this end, the following positions have been taken this fiscal year:

- Requested a water quality component to the C-43 reservoir design.
- Requested Florida Power and Light consider selling their property on Gasparilla Island for conservation purposes.
- Requested Florida Communities Trust to favorably rank City of Venice land acquisition request.

### Grants

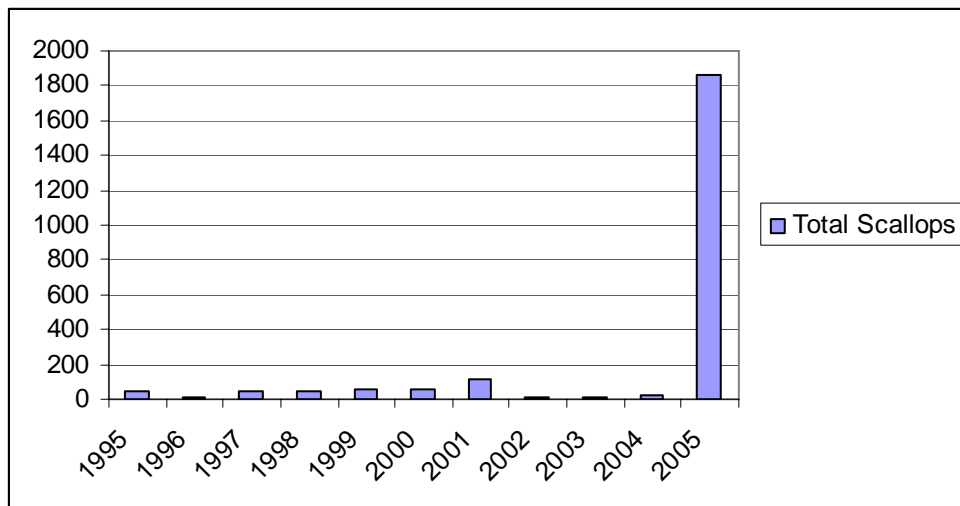
CHNEP funds 3 grant programs: Research and Restoration Partners Program (RRPP), Public Outreach Grants (POG), and Microgrants. Each has varying funding levels and matching and application requirements. The grants completed during fiscal year 2006 as of March 2006 include:

- Mote Marine Laboratory project "Effects of Restoration of Subtropical Oligohaline Marshes on Abundance and Habitat use" showed differences in fish species richness and total abundances between natural and degraded creeks, lack of SAV in degraded creeks.
- Sarasota County project "Lemon Bay Ecosystem Restoration Project" removed exotic vegetation, such as Brazilian pepper, on Wetland C; altogether 78.5 acres of exotics have been treated to date, with later phases funded by Sarasota, SWFWMD and FishAmerica.
- CHEC & Mote Marine Laboratory report "Development of a Fluorescence Method to Detect Optical Brighteners in the Presence of Varying Concentrations of Fluorescent Humic Substances: Identifying Regions Influenced by OSTDS in the Estuarine Waters of Charlotte Harbor" showed that optical brighteners may be an effective method for detecting septic tank impacts; however, it is not the quick and inexpensive method of detecting septic impacts as originally hoped. The dual fluorometer method is a quantitative method for detecting optical brighteners but requires extensive post-processing to correct for temperature and humic concentrations. Wet season color interferes with the detection of optical brighteners. Fluorometry can confirm low

concentrations of OB when full spectrum excitation-emission measurements conducted on discrete samples.

- Conservancy of Southwest Florida's "Survey of Invasive Exotic Vegetation on Wetland Function" found lower faunal diversity in areas impacted by Melaleuca &/or Brazilian pepper. Removal of exotics improves diversity. Larger patch sizes need study.
- Florida Gulf Coast University's "Community-based Oyster Bar Restoration" project leveraged funds from SeaGrant, SFWMD and others to build oyster reefs in Estero and Caloosahatchee Rivers.
- SCCF investigated spotted seatrout growth rates in Pine Island Sound and found high mortality between year class 1 and 2.
- FDEP removed 100 acres of melaleuca at Tippecanoe East.
- The Friends of the Myakka volunteer organization investigated methods to remove cogon grass without permanent success. The University of Florida is continuing the research in the Myakka State Park with NEP support.
- Pine Island Sound used to be the site of a commercial scallop fishery until 1963. As late as the early 1990s, scallops populations would expand sufficiently for harvest to occur. Based on Florida Fish and Wildlife Research Institute (FWRI) annual assessments, scallop populations since designation of the CHNEP have been very low in Pine Island Sound. Mote Marine Laboratory, with funding from CHNEP, SCCF, and FWC, implemented a new technique to release larvae in its "sticky" stage from adult scallops collected from the restoration site. In 2005, Pine Island Sound had the highest density of scallops of all the estuaries surveyed by FWRI!

#### Annual Scallop Survey along standard transect courses in North Pine Island Sound



- Lee County/Florida Sea Grant Program created a traveling display with changeable information panels on topics of interest to local anglers and boaters.
- More than 400 volunteers picked up more than 6,000 pounds of debris along the shorelines of Charlotte Harbor during the International Coastal Cleanup organized by Keep Charlotte Beautiful on September 17, 2005.
- Butterfly patch was developed by children at Sallie Jones Elementary school in Punta Gorda along with the Peace River Butterfly Society and Extension FYN.
- Replanted San Casa Drive in Englewood with native species and placed identification signs.

- About 500 attended People for Trees 2nd annual Eco-Kids Blast! on September 24, 2005, in North Port where children learned about native birds, buds, panthers and snakes.
- Garden Club of Harbour Heights in Charlotte County planted native species in select medians as demonstration sites and educated residents through local paper and other means. The sites inspired others to follow this example.
- Two 4th grade classes from Heights Elementary, serving a low income and traditionally African American neighborhood, learned about wetlands and interdependence at Sanibel-Captiva Conservation Foundation.
- Polk County Extension produced 195 color brochures "We can Help! Resources for Gardening and Landscaping in Polk County."
- Manatee World, Inc organized removal of 600-700 pounds of underwater debris from Sanibel Causeway.
- Third Annual Burrowing Owl Festival in Cape Coral Rotary Park had 1800 attendees.
- Cape Coral Historical Society completed its FYN Demonstration Garden of 4000 sf w/ rain collection barrels, bat house, screech owl house, signage, 600 feet of walking paths, 50 species of native plants.
- Keep Polk County Beautiful published the 2005 Great American Cleanup Resource Guide, regarding litter prevention, recycling and earth-friendly cleaning agents.
- LE/AD published a 20th anniversary 8-page tabloid on lake protection. More than 100,000 were distributed.
- 160 children, 9 teachers, and 16 parents from Taylor Elementary engaged in Seagrass adventures at Cedar Point Environmental Park.
- Removed 1500 pounds of debris from Boca Grande Pass.
- Chain of Lakes Festival held April 16, 2005 with 2500 to 3000 in attendance. Event raised awareness about lake preservation.
- LE/AD sponsored Polk County Lakes Appreciation Celebration which removed 1500 pounds of litter from 7 lakes with 162 volunteer hours
- Polk County Utilities expanded its "Conservation Corner-A Conservation Library" off of its customer lobby in Winter Haven. It couples with the FYN Demonstration garden funded by SWFWMD.
- DeSoto Library Association hosted Windwords: Hurricane Stories in DeSoto County, with much media coverage in DeSoto.

CHNEP also pursues grants on behalf of partners. In 2005, we have:

- Requested \$310 million from our legislative delegation to purchase Babcock Ranch for stewardship purpose.
- Working with the Babcock Preservation Partnership received \$3 million from the Federal government towards the acquisition of Babcock Ranch by the State of Florida.

## **2006 Goals Achieved**

Major goals achieved include:

- Completed Lower Charlotte Harbor Reconnaissance Report, Final Draft
- Published Charlotte Harbor Summit in peer-reviewed journal, *Florida Scientist*
- Prepared major CCMP update

## **Major goals/focus for 2007**

Major goals for the coming year include:

- Begin implementation of updated CCMP

## Priority Changes

Priorities have been changing for the CHNEP. The changes include new priorities which have been identified in the draft CCMP to be implemented by all of our partners, not just the NEP Program Office. New draft actions include:

Acquire Babcock Ranch for public stewardship.
Advocate land and easement acquisition programs
Provide information on the economic, social, and environmental benefits of protected land.
Evaluate the Impacts of Man-made Barriers to Historic Flows
Limit excess storage of water in dry season and big pulsed release events in the wet season
Conduct a variety of surveys to gauge public awareness and concerns.
Develop programs and incentives to encourage voluntary conservation easements.
Incorporate into federal, state, and local permits and public works improved standard practices that better protect estuaries and watersheds.
Determine the relationship between macro- and micro-nutrients and phytoplankton/algal blooms.
Encourage, expand, and develop incentives for the reuse of water that is protective of water quality.
Encourage, expand, and develop incentives for the reuse of water that is protective of water quality.
Participate in the development of 303(d) TMDLs and BMAPs.
Communicate personal and home “best practices” to help the consumer protect water quality.
Identify the hydrologic and environmental impacts of reservoirs on estuaries within the watershed (including all types- above and below surface reservoirs for water supply, restoration, or mining)
Discourage the dredging of new navigation and drainage canals.
Identify and showcase accomplishments and excellent examples including research findings, restoration, legislative changes, and outreach successes using a variety of methods. (esp. for legislators)
Provide special events to involve people in estuary protection and connect them to their watershed.
Encourage the use of low water impact techniques in new and old developments.
Create incentives for development that protects desired ecosystem resources.
Vigorously pursue the <i>Long-Range Financial Strategy</i> and funding mechanisms to implement watershed and estuary protection.
Post raw data, Geographic Information System (GIS) and technical analysis on the Internet under the <i>Data Management Strategy</i> .
Update comprehensive inventories of research, restoration, legislative and outreach needs.
Implement the <i>Advocacy and Review Procedures</i> .
Maintain a Charlotte Harbor NEP website and newsletter.
Present scientific information in a form readily understood by the majority of the population.
Conduct new resident programs to inform and encourage environmental stewardship.
Determine which types of outreach work best and how to expand these types of efforts to all areas.
Provide education program on the impacts of invasive exotic plants and exotic nuisance animals.
Offer grants to broaden participation of individuals and groups in implementing the CCMP.
Identify underrepresented populations and develop methods to include them in estuary and watershed protection.
Incorporate estuary and watershed protection in educational curricula.
Implement target audience programs.
Protect first order streams from elimination and restore these stream courses and their floodplains where opportunities exist.
Adopt, track and present monitoring data as they relate to <i>Environmental Indicators</i> targets.
Provide the public opportunities to be involved in restoration activities.
Set and achieve Minimum Aquifer Levels. Reduce the rate of saltwater intrusion of the Floridan Aquifer.
Identify natural, existing and target water budgets for each basin
Build and restore water conveyances to have shallow, broad, vegetated, and serpentine components which also increase floodplains.
Advocate Pollutant Load Reduction Goal (PLRG) adoption
Identify more accurate nutrient loading rates from various land uses in the Charlotte Harbor NEP study area.
Develop site specific criteria for dissolved oxygen, chlorophyll <i>a</i> , turbidity / total suspended solids, salinity, and pesticides as applicable.
Assess the impacts of Canal/Lake Management Activities on Fish and Wildlife
Promote invasive exotics local programs to research and eliminate invasive exotic animal species.
Create/modify legislation that financially prohibits the purchase of exotic “pets” that threaten our natural resources.

## FY 05/06 Travel

Table 1 details travel expenditures for FY 05/06. Travel included attendance of at least two staff members at each ANEP meeting.

<b>Table 1. Training and Conference Travel Fiscal Years 2005-2006</b>				
<b>Date</b>	<b>Reason for Travel</b>	<b>Staff Member</b>	<b>Location</b>	<b>Expense</b>
October 11-14, 2005	ANEP Fall Meeting	L. Beever, M. Hilgendorf	Providence, RI	\$2,539
October 14-21, 2005	Estuarine Research Federation	C. Corbett	Norfolk, VA	\$2,003
November 1-3, 2005	Florida Water Resources Monitoring Council	C. Corbett	Clearwater, FL	\$363
December 13-14, 2005	EPA Region IV Meeting	L. Beever, C. Corbett, L. Donley, M. Hilgendorf	Atlanta, GA	\$1,403
January 11-13, 2006	ANEP Directors Meeting	L. Beever	Cocoa Beach, FL	\$244
March 5-9, 2006	ANEP Spring Meeting	L. Beever, C. Corbett, L. Donley	Washington, DC	\$3,495
March 6-9, 2006	Social Marketing Workshop	M. Hilgendorf	Orlando, FL	\$977
October-February 2006	Other in-state travel to various meetings.	L. Beever, C. Corbett, L. Donley, M. Hilgendorf	Within Study-Area	\$4,334

### Projected Travel for remainder of FY 06

June 27-30, 2006	US EPA Community Involvement Conference	M. Hilgendorf	Milwaukee, WI	\$650
Autumn 2006	Tech Transfer	C. Corbett, L. Donley	Florida	\$500
September 2006	ANEP Fall meeting	L. Beever, L. Donley, M. Hilgendorf	San Francisco	\$5,000
March-September 2006	Other in-state travel to various meetings.	L. Beever, C. Corbett, M. Hilgendorf	Within Study-Area	\$7,000

Total:

\$26,031

# Workplan Projects for FY 06/07

## Task 1: Management Conference and Administration

One of the most important services that the CHNEP provides to its partners is providing a venue to share information regarding habitat, hydrologic, and water quality protection. This venue is the CHNEP Management Conference. The Conference is composed of four committees including Policy, Management, Technical Advisory, and Citizens Advisory Committees and their various subcommittees.

Subtasks include:

- 1.1 Management Conference
- 1.2 General Administration
- 1.3 Leveraged Grants
- 1.4 Grants and Contracts Administration

Deliverables include:

- Committee Agenda Packets
- FY2006 Audit
- Required Progress Reports
- Required Invoice Packets

<b>1.1</b>	<b>Management Conference</b>	
<p><b>Objective:</b> To provide a committee structure that supports the implementation of the Comprehensive Conservation and Management Plan (CCMP).</p>		
<p><b>Previous Work:</b> The CHNEP Management Conference was established in 1996 to support the development of the CCMP. Since that date, committee and subcommittee packets have been the staple of the CHNEP process. The FY 04/05 Workplan was adopted in May 2004 and amended May 2005. Progress reports are issued monthly and incorporated in committee packets. In May 2005, the City of Winter Haven joined the Management Conference.</p>		
<p><b>Description:</b> The primary committees of the CHNEP include the Policy Committee, the Management Committee, the Technical Advisory Committee (TAC), and the Citizens Advisory Committee (CAC). In addition, each committee has subcommittees. The committees and subcommittees each receive an agenda packet. Policy Committee meetings and subcommittees where two or more elected officials attend are advertised in accordance with state law. Committees meet at various locations within the watershed, necessitating the occasional meeting space cost. For FY 05/06, a triennial evaluation report was developed and submitted to EPA.</p>		
<p><b>Deliverables:</b></p> <ul style="list-style-type: none"> <li>• Agenda Packets for committees and subcommittees</li> <li>• Advertising and meeting space</li>   <li>• Adoption of FY 07/08 Workplan</li> <li>• CCMP and Workplan Tracking System Update</li> <li>• Evidence of extending CHNEP partnership</li> <li>• Priority Action GPRA Report</li> <li>• Travel to ANEP</li> </ul>		<p><b>Target Dates:</b></p> <ul style="list-style-type: none"> <li>• Mail one week before meeting</li> <li>• Advertise in FAW two weeks preceding date</li> <li>• June 2007</li> <li>• June 2007</li> <li>• September 2007</li> <li>• September 2007</li> <li>• October and March</li> </ul>

1.2	<b>General Administration and Supplies</b>	
<b>Objective:</b> To support necessary administration of the CHNEP.		
<b>Previous Work:</b> Annually, the SWFRPC conducts a single audit report. For FY 2005, the auditors issued an unqualified opinion (of adhering to generally acceptable accounting principles) letter. In autumn 2004, the host agency (SWFRPC) purchased an office building and moved from leased offices. A significant component of CHNEP staff time was applied to moving to offices.		
<b>Description:</b> General administration includes general staff functions such as staff meetings. Supplies such as postage, rentals, telephone, computer/graphic supplies are included in this task. Finally, unforeseen expenses that are at the Director's discretion such as cellular telephone, special computer equipment or software, training materials, subscriptions, memberships, etc.		
<b>Deliverables:</b>		<b>Target Dates:</b>
<ul style="list-style-type: none"> <li>• FY 06 Audit Report</li> </ul>		<ul style="list-style-type: none"> <li>• January 2007</li> </ul>

<b>1.3   Grants and Contracts Administration</b>	
<b>Objective:</b> To implement the CCMP by ensuring compliance with awarded grant requirements, including reporting and invoicing.	
<b>Previous Work:</b> The CHNEP program staff has been administering the EPA Cooperative Agreement since the inception of the NEP. In the past, CHNEP has either sought or been awarded additional grants from EPA and other agencies, such as the U.S Army Corps of Engineers. Each of these grants has compliance requirements, including specific reporting needs and invoicing processes. Additionally, CHNEP has been awarded grant funds for projects that are contracted out to third parties, such as the Regional Coastal funds awarded by USEPA Region 4. Program staff are responsible for administering the contracts and ensuring all reporting requirements are met. Staff invoices Management Conference partners for contributions and reimbursement for shared project costs.	
<b>Description:</b> As part of the Long Range Funding Strategy it was recommended that CHNEP aggressively pursue Federal and State funding assistance and new funding sources. Ensure compliance with awarded grants, and cooperative assistance agreements from Federal, state, local agencies and private sources. Develop and submit quarterly progress reports and final project reports as required. Invoice funding source as required, ensure successful project progress and completion. This task also supports staff time for the management of grants that do not include administrative support in the award, such as the Friends of Matanzas Pass Preserve contract that was completed in FY2005	
<b>Deliverables:</b> <ul style="list-style-type: none"> <li>• Quarterly and Semi-Annual Progress Reports as required</li> <li>• Final Reports (financial close out, work products)</li> <li>• Invoices for payment</li> </ul>	<b>Target Dates:</b> <ul style="list-style-type: none"> <li>• Quarterly, December, March. June, September</li> <li>• As Required</li> <li>• As Required</li> </ul>

## **Task 2: Public Outreach**

Public Outreach is a critical component of implementing the CCMP. Required aspects of the CCMP include outreach to various publics and data management. Information can be delivered in a variety of methods. These methods include newsletters, web sites, events, publications, conferences, field trips, workshops, etc.

Subtasks include:

- 2.1 Communications/Publications
- 2.2 Events/Outreach
- 2.3 Data Management
- 2.4 Public Outreach Grants
- 2.5 Micro-Grants

Deliverables include:

- Quarterly Newsletter (\$24,000 publication)
- Media relations (\$14,000)
- Internships (\$6,000 salaries)
- Collateral, Displays, etc. (\$8,000)
- 2007 Calendar (\$18,000)
- Reprints (\$9,000)
- Survey (\$7,000)
- National Estuaries Days (\$500)
- Charlotte Harbor Nature Festival (\$2,500)
- Public Information & Education Professional Development (\$1,800)
- Public Workshop (\$3,000)
- Programs that support FY&N (\$14,700)
- Guides, workshops, etc. to specific target audiences, including seagrass wading (\$23,500)
- CHNEP web site and FTP site (\$2,000)
- Submit new reports for CHIRC to host
- Quarterly Environmental Report
- Continuation of CHEC water quality website to all of the study area (\$17,000)
- Continuation of NEP ArcIMS website maintained by SWFRPC (\$10,000)
- Public Outreach Grants (\$30,000)
- Micro-Grants (\$11,000)

**Projects carried over from previous year:**

- Hurricane special issue of *Estuaries and Coasts*
- CCMP
- State of the Harbor Report Card
- Children's Book, map and guide
- Keep the Peace Conference

<b>2.1   Communications/Special Publications</b>	
<b>Objective:</b> To provide essential ongoing communications so that the CHNEP can address specific requirements and issues associated with the Comprehensive Conservation and Management Plan (CCMP).	
<b>Previous Work:</b> With the exception of 2004, four issues of <i>Harbor Happenings</i> have been published each year since 1997. The newsletter is also posted on the Program web site in Adobe Acrobat PDF format. (The program web site is included as subtask 2.3.) A 2006 calendar was developed using the same process followed in 2005. CHNEP encouraged people to submit up to three images -- taken in any medium at any time -- of the natural beauty of the study area. The public then selected images they wanted to appear in the calendar. The calendar has become very popular with nearly 100% of survey respondent reporting that the calendar is beautiful and that they learned more about the natural environment and will attend a CHNEP meeting or event. Videos produced include a series of two-minute interstitials on estuaries, watersheds, endangered animals, seagrasses and mangroves produced and broadcast by WGCU, a local PBS station. These videos are being made available to government access channels and others. A 7.5 minute video about the value of seagrasses and how boaters can avoid/minimize damage caused by boats will be used by local organizations offering boating courses and will also be available for broadcast. Work with the media in 2003-4 has been successful in highlighting CHNEP's events and successes. Various displays and posters have been produced and collateral has been printed as required. The book <i>Story of Charlotte Harbor</i> and the four program posters were all reprinted. The first intern worked for the program during FY03 for academic credit only. Several interns have been hired in subsequent years to assist with public information and education projects. The Charlotte County boaters guide was updated and reprinted and the Lee County boaters guide was digitized and placed on the county web site. During the summer of 2006 several special publications are anticipated to be completed, including a book for children in grade 3, a guide/map of environmental places, and a citizens guide to help residents be good stewards in an environmentally sensitive region of the country. Each publication developed is also posted on the program web site. The program published the proceedings of the 2005 Watershed Summit as a special issue of the <i>Florida Scientist</i> . The program also contributed to a hurricane special issue of <i>Estuaries and Coasts</i> .	
<b>Description:</b> Communication techniques vary. Specific techniques are mentioned in the CCMP on pages listed in parenthesis. The quarterly 12-page newsletter <i>Harbor Happenings</i> (page 211) covers coastal issues, events as well as updates on program activities and progress made toward implementing the CCMP. Contributions by program partners and distribution are expected to continue to increase. With the update of the CCMP, the CCMP Summary -- a colorful, succinct version of the CCMP -- will be updated and printed. A 2007 calendar will be developed using the same process followed in 2005 and 2006. Another "State of the Harbor" will be produced to "interpret" the findings of a CHNEP-sponsored research project for the public. Publications to be completed in 2006 will be reprinted, including a book for children in grade 3, a guide/map of environmental places, and a citizens guide to help residents be good stewards in an environmentally sensitive region of the country. Working with the broadcast, print and Internet media (pages 132, 154, 212, 214) is a cost effective method of increasing the public's awareness and understanding of CHNEP and issues of concern. Videos (pages 176 and 214) are developed as outreach tools to reach specific audiences with specific messages. Internships (page 213) serve many purposes, including extending staff and providing students with learning opportunities. Several opportunities will be contracted during the year with each intern doing work that will help implement the CCMP. This task also covers the cost of printing/producing such things as collateral materials (business cards, letterhead, etc.), displays, reprinting of existing resources such as posters and publications as well as postage for mailings. Program staff will continue with guest editorial duties for the hurricane special issue of <i>Estuaries and Coasts</i> . The Program will develop an outreach strategy.	
<b>Deliverables:</b> <ul style="list-style-type: none"> <li>• Quarterly Newsletter</li> <li>• Media relations</li> <li>• Internships</li> <li>• Collateral, Displays, Reprintings, etc.</li> <li>• 2007 Calendar</li> <li>• Outreach Strategy</li> <li>• <b>Projects carried over from previous year:</b></li> <li>• Hurricane special issue of <i>Estuaries and Coasts</i></li> <li>• CCMP</li> <li>• Children's Book, map and guide</li> </ul>	<b>Target Dates:</b> <ul style="list-style-type: none"> <li>• March, June, September and December</li> <li>• Ongoing</li> <li>• Ongoing</li> <li>• November</li> <li>• Spring 2008</li> <li>• Winter 2006/2007</li> <li>• Winter 2006/2007</li> <li>• Summer 2007</li> </ul>

<b>2.2   Events/Outreach</b>	
<b>Objective:</b> To provide events & outreach programs to address specific requirements associated with implementation of the Comprehensive Conservation & Management Plan (CCMP).	
<b>Previous Work:</b> The CHNEP develops a Watershed Summit every three years (2002, 2005, 2008) to discuss lasting research findings. <b>Public conferences</b> , focused on specific watersheds within CHNEP, are held on opposite years (2006, 2007). “Cape Coral Canals: A Public Conference on Water Quality and Quantity” was held March 25, 2006 with approximately 100 people attending. A second conference “Keeping the Peace: A Peace River Management Conference” is being planned for October 2006. Drawing on the strength of the program's partners, each year since 2000 the celebration of our local estuaries on <b>National Estuaries Days</b> has become bigger and better. In 2003, 35 activities offered provide public hands-on experiences to increase their understanding and concern about the local environment and range from festivals to guided walks to boat rides. EPA is providing their “Community Culture and the Environment: A Guide to Understanding Sense of Place” on May 10-11, 2006 at Edison College in Punta Gorda. Target outreach projects have focused on programs that are specifically mentioned in the CCMP, including the Florida Yards & Neighborhood (FY&N) Program, and audiences targeted such as teachers, hotels, agriculture industry. CHNEP hosted several workshops to help residents the importance of using native plants on their property. Native plant demonstration sites at public locations were also sponsored. A video will be completed during the summer of 2006 to inspire others to use native plants on their property. WGCU Public Media’s Curious Kids Nature Club web site is being redesigned to focus on issues of concern to CHNEP. The material will also be available on CDs or DVDs. CHNEP participates in events hosted by others throughout the year. Reports on all of these events are posted on the program web site.	
<b>Description:</b> <b>National Estuary Days</b> will again be celebrated by asking the program’s partners to support the program’s efforts to increase residents’ and visitors’ awareness of the estuary, the Charlotte Harbor watershed and program goals and plans by sponsoring an event(s). The <b>Charlotte Harbor Nature Festival</b> is expected to be held Saturday, October 7, 2006, again at the Tippecanoe Scrub/Charlotte County Sports Park. Presentations and demonstrations will focus on Florida friendly plants and lawns and another tent will feature the creative arts. There will be no admission, parking or registration fees. NOAA CSC will teach their “Project Design and Evaluation” workshop in December 2006. This is a continuing professional development opportunity sponsored by Charlotte Harbor NEP to offer those interested in public information and education an opportunity for professional development in order to enhance their abilities to implement the CCMP. Providing residents with information on the value of and how to plant natives or Florida friendly plants is considered by many to be critical. In cooperation with others, projects will be developed to reach additional audiences targeted in the CCMP. Several audiences are specifically mentioned in the CCMP (page 210), including those who work in education, agriculture, development/real estate, hotel/tourism, marine trades/fisheries, recreation/transportation, government as well as clubs, organizations and associations. This project will allow the NEP to work with people in specific industries to convey information to them about the NEP, issues of concern and actions this industry can take to help protect our estuaries. The funds listed may be spent on diverse projects, including guides, workshops, etc.	
<b>Deliverables:</b> <ul style="list-style-type: none"> <li>• National Estuaries Days</li> <li>• Charlotte Harbor Nature Festival</li> <li>• Public Information &amp; Education Professional Development</li> <li>• Public Workshop</li> <li>• Programs that support FY&amp;N</li> <li>• Guides, workshops, etc. to specific target audiences</li> <li>• Progress reports to SFWMD</li> </ul> <b>Projects carried over from previous year:</b> <ul style="list-style-type: none"> <li>• Keep the Peace Conference</li> </ul>	<b>Target Dates:</b> <ul style="list-style-type: none"> <li>• September-October 2006</li> <li>• October 7, 2006</li> <li>• December 12-14, 2006</li> <li>• Spring/Summer 2006</li> <li>• Ongoing</li> <li>• Ongoing</li> <li>• Quarterly</li> <li>• October 2006</li> </ul>

<b>2.3 Data Management</b>	
<p><b>Objective:</b> A data management strategy is a required element of each NEP. It provides information about information that is available, including technical information, facilitates the exchange of information among different organizations, and supports efforts for analysis of scientific information.</p>	
<p><b>Previous Work:</b> The program web site, <a href="http://www.CharlotteHarborNEP.org">www.CharlotteHarborNEP.org</a>, provides a wide array of technical and public outreach information. It has become an important link between the CHNEP and its varied audiences. The web site continues to expand and visitation continues to increase. In December 2003 a quarterly State of the Harbor report was initiated on the program web site. A FTP site is being developed to allow for easier transfer of large files.</p> <p>The Charlotte Harbor Information Resources Center (CHIRC) was updated in late 2003 and is hosted at <a href="http://library.fgcu.edu/CHENP/new/homepage.htm">http://library.fgcu.edu/CHENP/new/homepage.htm</a>. The web site has 3 major search engines that allow the user to review government and university held documents, links to scientific journals, links to the Charlotte Harbor NEP main site and government entities working in estuarine resource protection and programs allowing the user to view GIS and text documents, scanned documents and finally numerous, extensive subject and region-based bibliographies. Since 2003, the water quality of the northern part of the study area has been mapped on <a href="http://www.checflorida.org/chec/waterquality.htm">www.checflorida.org/chec/waterquality.htm</a> with SWFWMD funding. In 2005, the site was expanded to include the southern portion of the study area. Also in 2006, we hired the Southwest Florida Regional Planning Council to create and maintain an ArcIMS site to host GIS information at <a href="http://www.swfrpc.org/chnepgis.htm">http://www.swfrpc.org/chnepgis.htm</a>. New Shapefiles will be added and the site updated in 2007.</p>	
<p><b>Description:</b> The program web site, <a href="http://www.CharlotteHarborNEP.org">www.CharlotteHarborNEP.org</a> (page 212), provides up-to-date and comprehensive access to events, resources such as publications, and progress made toward implementing the CCMP as well as links to program partners, meeting agendas and minutes.</p> <p>Although a draft of the State of the Harbor Report: Water Quality Edition is expected to be completed by FY 04, its publication costs will likely occur in FY 05. The CAC Environmental Indicators Subcommittee will begin the preparation of the State of the Harbor Report: Hydrology Edition. The Report on Current Environmental Data will be maintained quarterly. The CHEC water quality monitoring site will continue to cover all of the study area. Additional funding from SWFWMD or Lee County will be sought for this project.</p>	
<p><b>Deliverables:</b></p> <ul style="list-style-type: none"> <li>• CHNEP web site and FTP site</li> <li>• Submit new reports for CHIRC to host</li> <li>• Quarterly Environmental Report</li> <li>• Continuation of CHEC water quality website to all of the study area</li> <li>• Continuation of NEP ArcIMS website maintained by SWFRPC</li> </ul>	<p><b>Target Dates:</b></p> <ul style="list-style-type: none"> <li>• On-going</li> <li>• On-going</li> <li>• September</li> <li>• September</li> <li>• On-going</li> </ul>

<b>2.4 Public Outreach Grants</b>	
<b>Objective:</b> To support CHNEP partners public outreach initiatives to further the Comprehensive Conservation and Management Plan.	
<p><b>Previous Work:</b> In 1999 CHNEP began awarding what are known as Research &amp; Restoration Partners Grants and Public Outreach Grants. FY 06 funding level was \$30,000 for Public Outreach Grants to award funds to the following 11 projects:</p> <ul style="list-style-type: none"> <li>• FYN Builder Developer Program: ELM West Coast, Inc.</li> <li>• Turtle Talks Activity Book: Turtle Talks</li> <li>• Estuary Neighborhood - A Coloring Book for Southwest Florida Estuarine Community: Charlotte Harbor Environmental Center</li> <li>• Hispanic Community Outreach Program: Ernesto Lasso de la Vega</li> <li>• Exploring WATER MATTERS: Explorations V Children's Museum</li> <li>• Sea Turtle Adventures - A 2006 Teachers Workshop: Coastal Wildlife Club, Inc.</li> <li>• Lakeside Display Signs at Lake Parker Park: Lakes Education-Action Drive</li> <li>• Stormwater Pond Management Program: Estero Bay Nutrient Management Partnership</li> <li>• Creek Kids: J. Colin English Elementary School</li> <li>• Native Plant Maze and Demonstration Site: Charlie &amp; Darlene Foster</li> <li>• Peace River Study 2006: Hardee County Schools Outdoor Classroom</li> </ul>	
<p><b>Description:</b> Public Outreach Grant projects occur in the Charlotte Harbor NEP study area and facilitate public education of environmental issues identified in the CCMP. Projects are typically completed in one year. No matching funds are required and the maximum funding per project is \$3,000.</p> <p>The guidance document to apply for a public outreach grant had been approved and disseminated by the end of August. Applications had been reviewed by staff and the CAC Grants Committee. The Grants Committee had made recommendations as to which applications should be funded to the CAC who makes recommendations to the Management and Policy Committees for final action by February. In FY06 the decision process was simplified with the Program Director considering the CAC's recommendations. This allowed the projects to begin as early as December 2005. In FY07 the timing changed so that the guidance was approved and disseminated in March 2006 with applications due in August 2006. Funding decisions may be made as early as October 2006. This change will allow teachers to apply at the beginning of the school year for work that can be done that same year. Projects may begin once a contract is signed and notarized.</p>	
<p><b>Deliverables:</b></p> <ul style="list-style-type: none"> <li>• Guidance Document</li> <li>• Approximately 13 public information and education projects</li> </ul>	<p><b>Target Dates:</b></p> <ul style="list-style-type: none"> <li>• March 2006</li> <li>• October 2006</li> </ul>

<b>2.5</b>	<b>Micro-Grants</b>
<b>Objective:</b> To provide year-round support CHNEP partners public outreach initiatives that further the Comprehensive Conservation and Management Plan.	
<b>Previous Work:</b> The first \$250 micro-grant was awarded in March 2002. Since then 185 applications have been awarded. The following applications were approved between October 2005 and March 2006.	
<ul style="list-style-type: none"> <li>• People for Trees: Eco-Kids Blast on September 24, 2005</li> <li>• City of Cape Coral Environmental Services Division: Cape Coral New Residents Environmental Education Packet</li> <li>• Sanibel-Captiva Conservation Foundation: Field Trips for Fourth grade students from Heights Elementary to SCCF</li> <li>• Caloosahatchee River Citizens Association: Billy Creek Cleanup at Shady Oaks Park</li> <li>• Trafalgar Middle School: Project Protect and Preserve</li> <li>• Florida Sea Grant Extension: Monofilament Recovery &amp; Recycling Program</li> <li>• Venice Area Audubon Society, Inc.: Audubon Butterfly Garden</li> <li>• Cape Coral Friends of Wildlife: Burrowing Owl Festival - Fourth annual on Feb 18, 2006</li> <li>• Diplomat Elementary School: Life Cycle of a Butterfly</li> <li>• Whispering Pines Condo Association: Replacing Trees taken Away from Whispering Pines Condo Association by Charlie and Wilma</li> <li>• People for Trees: Eco-Kids Blast on September 24, 2005</li> <li>• Peace River Audubon Society: Enrichment/extension activities to follow 2 day estuary environment experiences at Charlotte Harbor Environmental Center for 6 classrooms</li> <li>• Charlotte Harbor Environmental Center: Plant Garden at the Cooper St. Recreation Center</li> <li>• Fort Myers Beach Pilot Club: Spring 2006 Trash Bash</li> <li>• Fort Myers Beach Pilot Club: Fall 2006 Trash Bash</li> <li>• FNPS Mangrove Chapter: Plant Native Day on February 25, 2006</li> <li>• The Sanibel School: Calusa - Survival Style</li> <li>• People for Trees: 8th Annual North Port Tree Festival on April 22, 2006</li> <li>• Ernesto Lasso de la Vega: Attendance to 'Fostering Sustainable Behavior, Community-based social marketing workshop</li> <li>• Lakes Education/Action Drive: Peace River Environmental Education Network Quarterly Meetings between Summer 2006 and Summer 2007</li> <li>• Charlotte Harbor Environmental Center: Reprint Identifying &amp; Controlling Invasive Exotic Plants in Southwest Florida - A Homeowners Guide</li> <li>• Lee County Parks &amp; Recreation: The Calusa Blueway Paddling Festival - Children's Activity Area on June 2-4, 2006</li> <li>• Myakka River Management Coordinating Council: Website</li> <li>• North Port High School: Butterfly Gardening with water conserving native plants</li> </ul>	
<b>Description:</b> One of the four Public Education Goals is “to establish and maintain environmental educational efforts with organizations, educational centers, and government agencies.” This project is also known as “micro-grants” which provide up to \$250 to support immediate public outreach opportunities. (The CAC will consider if the limit should be increased.) These funds allow the Program Office to respond to requests as they arise. The applicants provide audiences with information about CHNEP. Awards are granted under the Director’s authority to implement the CCMP.	
<b>Deliverables:</b>	<b>Target Dates:</b>
<ul style="list-style-type: none"> <li>• Approximately 44 small, innovative projects</li> </ul>	<ul style="list-style-type: none"> <li>• Available year round</li> </ul>

### **Task 3: Research**

Research and monitoring are critical tasks to address gaps in knowledge that are obstacles to good decision-making and to determine the conditions of the resources within the Charlotte Harbor watershed. One of the more important roles of the NEP is to serve as a central location of information for the Charlotte Harbor watershed. The program consistently compiles and analyzes data on hydrology, water quality and fish and wildlife habitat for the entire study area so that resource managers, scientists, decision makers and citizens can obtain information gathered by our program partners on a watershed basis or by subbasin. Examples of projects include the “Water Quality Data Analysis and Report for the Charlotte Harbor National Estuary Program” by Janicki Environmental, Inc in 2003, “An Analysis of Hydrologic Conditions within the Charlotte Harbor National Estuary Program Study Area” by URS Corporation in 2006, “Assessment of Boat Propeller Scar Damage within the Greater Charlotte Harbor Region” by the Florida Marine Research Institute in 2005, and “Analysis of Submerged Aquatic Vegetation, Inter-tidal Unvegetated, Saltwater Marsh, Mangrove, Oyster, Freshwater Wetland and Native Upland Habitats within the Greater Charlotte Harbor Watershed” by Avineon, Inc. Another role of the NEP is to ensure that studies and monitoring undertaken in one area of the watershed are duplicated in others as much as practicable to address data gaps.

Subtasks include:

- 3.1 Research Coordination
- 3.2 Targeted Research
- 3.3 Research and Restoration Partners

<b>3.1   Research Coordination</b>	
<b>Objective:</b> To coordinate monitoring approaches so that consistent and reliable information is available throughout the CHNEP study area and to identify research needs for implementation through partnerships.	
<b>Previous Work:</b> The first comprehensive monitoring program for the entire coastal region of Charlotte Harbor began in 1996 with the Charlotte Harbor Estuaries Volunteer Water Quality Monitoring Network. The Coastal Charlotte Harbor Monitoring Network (CCHMN) was created in April 2001 and expanded in 2002. In 2005, CHNEP funded development of methods to upload these randomized data into STORET and train participants. CHNEP staff oversees management and facilitates issue resolution for the Network. In 2003 and 2004, the Fisheries Independent Monitoring Program by the Fish and Wildlife Research Institute (FWRI) expanded into southern Charlotte Harbor through funding by the SFWMD. The SFWMD and SWFWMD are utilizing the same timeframe for seagrass mapping efforts to ensure data comparability for seagrass coverage harbor-wide. The first Research Needs Inventory was adopted to prioritize CHNEP research projects for funding, match research needs with grant opportunities, and to encourage partner funding of gaps in knowledge which are obstacles to effective decision-making. The Management Conference approved environmental indicators and targets in 2005. In support of one of these indicators, NEP staff completed a status and trends analysis of seagrass aerial extent for the special issue of <i>Florida Scientist</i> .	
<b>Description:</b> Continue implementation of the Coastal Charlotte Harbor Monitoring Network (CCHMN) and initiate additional data collection to support water quality targets. Identify opportunities for partners to develop consistent and geographically complete information, replicating the benefits obtained by better coordination of seagrass mapping and expansion of the FWRI independent fisheries monitoring. Coordinate research and monitoring efforts and filling of data gaps. CHNEP staff will participate in the development of the Florida Water Resources Monitoring Council. The TAC will refine the environmental indicators and develop numeric water clarity targets based upon light requirements of seagrass by basin. A technical intern was hired in 2006 to help with data management and accessibility issues and other tasks; the staff person will remain in at least some of FY07. Finally, partners such as EPA and NOAA request information and analyses regarding the Charlotte Harbor region somewhat frequently, such as our input into the NOAA Coastal Eutrophication Survey and EPA's Coastal Condition Report. On occasion, our efforts to support our partners take hours, days and even weeks of staff time.	
<b>Deliverables:</b> <ul style="list-style-type: none"> <li>• Annual field audit and meeting of CCHMN members</li> <li>• Add new analytes or modify methods to CCHMN for water quality targets</li> <li>• Coordinate partners to develop consistent and geographically complete information</li> <li>• Fl Water Resources Monitoring Council Participation</li> <li>• Water Quality Targets for chlorophyll <i>a</i> and dissolved and suspended matter</li> <li>• Respond to Requests for Information pertaining to research and data collection</li> <li>• Technical Intern</li> </ul> <b>Projects carried over from previous year:</b> <ul style="list-style-type: none"> <li>• Article for <i>Estuaries and Coasts</i> on Hurricane Impacts, including Charley on Charlotte Harbor</li> </ul>	<b>Target Dates:</b> <ul style="list-style-type: none"> <li>• September</li> <li>• September</li> <li>• On-going</li> <li>• On-going</li> <li>• On-going</li> <li>• On-going</li> <li>• On-going</li> <li>• December 2006</li> </ul>

<b>3.2 Targeted Research</b>	
<b>Objective:</b> To conduct research targeted for implementation of the Comprehensive Conservation and Management Plan (CCMP).	
<p><b>Previous Work:</b> The NEP contracted with FWRI to analyze changes in boat propeller scarring of the coastal Charlotte Harbor region from Venice to Estero Bay since their 1995 state-wide assessment effort. Also, the program contracted with Avineon, Inc. to compile historical and current spatial data on the various habitats within the CCMP for a change analysis by subbasin. The program contracted with Mote Marine Laboratory to compile previously collected benthic invertebrate data and gather original data into an interactive database that will document the usage of various coastal habitats listed within the CCMP by benthic invertebrates. The NEP contracted with URS Corporation to compile groundwater level and freshwater flow data for the entire Charlotte Harbor study area into a central location and analyze changes since historical conditions by subbasin. The program also hosted a Water Budget Workshop to entail a technical discussion on developing a “Water Budget” for the greater Charlotte Harbor estuarine system. The NEP contracted with Janicki Environmental, Inc to compile all surface and groundwater data into a centralized database and analyze it for status and trends by subbasin; this previous work is being updated now. An update and follow-up analysis is expected every three years. The program also supported its partners in the implementation of its Long Term Monitoring Strategy through the Coastal Charlotte Harbor Monitoring Network by contracting with GES Research Corporation to develop a systematic protocol to upload the Network data to STORET. The NEP will continue its support of the Charlotte Harbor Estuaries Volunteer Water Quality Monitoring Network (CHEVWQMN) to provide quality assurance, data management and data analyses for the data collected by the volunteers.</p>	
<p><b>Description:</b> Environmental Indicators were approved by the Management Conference in 2005. In addition, the CCMP is currently being updated with a number of new Objectives and Actions. During the process of developing both the Environmental Indicators and the CCMP Update, a multitude of knowledge gaps were and will continue to be identified by the TAC. The TAC and its subcommittees will continue to identify knowledge gaps, prioritize them and develop a scope(s) of work for a project(s) and staff tasks to address these knowledge gaps.</p>	
<p><b>Deliverables:</b></p> <ul style="list-style-type: none"> <li>• Continuation of CHEVWQMN</li> <li>• Project(s) to address knowledge gaps identified by the TAC for our Environmental Indicators and/or CCMP Update</li> </ul> <p><b>Projects carried over from previous year:</b></p> <ul style="list-style-type: none"> <li>• Benthic Species Richness, Comparison</li> <li>• Historic Coastal Benthic Habitat Map</li> <li>• Pre-development vegetation map for study area</li> <li>• Historic Hydrologic Subbasin Map</li> <li>• 2005 Water Quality Status and Trends (with additional funds in FY2007)</li> </ul>	<p><b>Target Dates:</b></p> <ul style="list-style-type: none"> <li>• On-going</li> <li>• September 2008</li> <li>• October 2006</li> <li>• September 2007</li> <li>• September 2007</li> <li>• September 2007</li> <li>• March 2007</li> </ul>

<b>3.3</b>	<b>Research and Restoration Partners</b>
------------	--

**Objective:** To promote innovative techniques in research and restoration

**Previous Work:** These projects started in 1997 with the funding of Early Action Demonstration Projects with six projects costing a total of \$85,000. This grew to 12 projects in 1998 at a cost over \$140,000. In 1999, the projects were split into Mini-Grants and Restoration Partners grants with 4 projects at approximately \$70,000 going to water quality monitoring, restoration of habitat or baseline benthic invertebrate data collection. In 2000, four habitat restoration projects were funded for a little over \$60,000. In 2001, the grants changed again to allow the funding of applied research. Six projects at a cost of \$73,000 to the program were funded for restoration of habitat on Sanibel, coastal Venice and the Charlotte Harbor Buffer Preserve as well as research into Old Mined Lands and the content of metals and pesticides in oysters in the Caloosahatchee River. In 2002-2004, the program has budgeted approximately \$100,000 annually for the Research and Restoration Partners grants. In 2005 and 2006, the budget was decreased to approximately \$50,000.

**Description:** This grant process provides incentives and seed money for applied research on local issues and restoration within the greater Charlotte Harbor watershed. Applicants are permitted to request \$20,000 per supporting partner up to the cap allocated to this fund. This grant could be used for small equipment, labor and plants as a contribution or incentive for public and private organizations to improve the environmental quality of their lands. It can also be used for analysis costs, travel and labor for researchers to study issues important to preserving the Charlotte Harbor ecosystem. A proposal would be submitted from an applicant and through a selection process involving the Technical Advisory, Management and Policy Committees, the top projects would be funded.

<p><b>Deliverables:</b></p> <ul style="list-style-type: none"> <li>• Approve RRPP RFP guidance document</li> <li>• Commit to partnership funding of RRPP projects</li> <li>• Final reports from RRPP projects</li> </ul> <p><b>Projects carried over from previous year:</b></p> <ul style="list-style-type: none"> <li>• Melaleuca Removal from Pop Ash Creek Preserve</li> <li>• Identities and ecological effects of ecoestrogens present in the Caloosahatchee River</li> <li>• Identification of microbes critical to seagrass restoration</li> <li>• Expanding Bay Scallop Restoration in Pine Island Sound Using Competent Larvae</li> <li>• Does Nitrogen from Sludge Farm Runoff Persist in the Charlotte Harbor Study Area?</li> <li>• <i>Vallisneria americana</i> Restoration within the Caloosahatchee River</li> <li>• Burrowing Owl Survival and Dispersal Study</li> <li>• Do Altered Coastal Habitats Promote Non-Native Fish Invasions?</li> <li>• Community Level Impact of West Indian Marsh Grass on the Myakka River Watershed and Evaluation of a Potential Management Strategy</li> </ul>	<p><b>Target Dates:</b></p> <ul style="list-style-type: none"> <li>• August 2006</li> <li>• April 2007</li> <li>• September 2008</li> <li>• September 2007</li> <li>• September 2007</li> <li>• September 2007</li> <li>• September 2006</li> <li>• September 2007</li> <li>• September 2006</li> <li>• September 2006</li> <li>• September 2006</li> <li>• September 2006</li> </ul>
---	---

## **Task 4: Restoration**

Restoration is the most physical expression of CCMP implementation. Operating and Capital projects to implement the CCMP are largely the responsibility of local and regional government. Nearly all of the costs are borne by CHNEP partners and through outside grants obtained by the partners and CHNEP. However, the CHNEP program office provides partners services coordinating watershed initiatives, cataloging restoration needs, participating in Everglades restoration activities, assisting in developing and refining Surface Water Improvement and Management (SWIM) plans. Restoration projects identified in the CCMP include:

- Exotics removal
- Enhancing shoreline habitat and restoring wetlands
- Install shallow water resource markers
- Increasing environmental compliance and enforcement
- Protecting environmentally sensitive land
- Restoring oyster bars
- Implementing water conservation and reuse programs
- Re-establishing historic hydrologic connections
- Plugging abandoned wells
- Restoring groundwater levels
- Preventing and reducing hydrologic impacts of transportation projects
- Implementing 3-D circulation models
- Establishing a shellfish monitoring network
- Installing BMPs
- Providing central sewer within 900 feet of all waters
- Expanding Florida Yards and Neighborhoods
- Reducing non-point source pollutant from stormwater runoff
- Expanding use of reclaimed water
- Reducing contaminants from marina and dock operations.

Subtasks include:

- 4.1 Watershed Coordination
- 4.2 Everglades Restoration
- 4.3 Estero Bay Watershed Program
- 4.4 Babcock Site Assessment

<b>4.1 Watershed Coordination</b>	
<b>Objective:</b> To develop and update a CHNEP Restoration Plan and participate in activities which will implement this plan and CCMP objectives and actions relating to restoration.	
<b>Previous Work:</b> The CHNEP program office designed a database which houses proposed restoration ideas. Restoration includes improvements to water quality, habitat, and hydrology. The Estero Bay Agency on Bay Management began mapping restoration proposals for the Lee County Mitigation Plan in March 2003. The Charlotte Harbor-Caloosahatchee Restoration Coordination Team (of Everglades Restoration) replicated the methodology in those basins. The CHNEP completed the mapping for the Lee County Mitigation Plan and Restoration Plan under its auspices in the City of Fort Myers Beach and the City of Sanibel. In 2003, the Charlotte Harbor Environmental Center Watershed Center accepted the responsibility of replicating the methodology in the northern basins of the CHNEP study area with Southwest Florida Water Management District funding. The work was completed in 2005. CHNEP also manages the Estero Bay Nutrient Management Partnership funding from EPA to the Southwest Florida Watershed Council. CHNEP participated in and is a signatory member of the Shell and Prairie Creeks Watershed Management (Reasonable Assurance) Plan.	
<b>Description:</b> Provide staff support for restoration mapping efforts, including hosting the master restoration database and Shapefiles. Funding is allocated to support SWFRPC graphic services and GIS equipment costs. Tracking of restoration plan implementation is performed annually through the annual development of the Government Performance and Review Act (GPRA) report. Participation in watershed initiatives such as the Southern Water Use Caution Area (SWUCA) Recovery Strategy, Minimum Flows and Levels, Reasonable Assurance Plans, Basin Management Action Plans, development of basin water budgets etc. are included in this subtask. Finally, partners such as EPA and NOAA request information and other support regarding restoration and conservation efforts within the Charlotte Harbor region somewhat frequently. On occasion, our efforts to support our partners take hours, days and even weeks of staff time.	
<b>Deliverables:</b> <ul style="list-style-type: none"> <li>• CHNEP Restoration Plan</li> <li>• GPRA Report</li> <li>• Watershed Management Plans and “Verified Lists” development</li> <li>• Minimum Flows and Levels</li> <li>• Water Budget for Charlotte Harbor basins, including through the Lower West Coast Water Supply Plan development</li> <li>• Staff support to regional watershed efforts such as SWIM planning, SWUCA, Caloosahatchee Regional River Recovery Strategy, and Peace River Cumulative Impact Assessment</li> </ul>	<b>Target Dates:</b> <ul style="list-style-type: none"> <li>• September 2007</li> <li>• October 2006</li> <li>• Based on Impaired Waters Rules dates</li> <li>• Based on MFL Schedules</li> <li>• As opportunities arise.</li>   <li>• As opportunities arise.</li> </ul>

<b>4.2 Everglades Restoration</b>	
<b>Objective:</b> To support development and implementation of Everglades Restoration.	
<b>Previous Work:</b> CHNEP staff have participated in the development of the Southwest Florida Feasibility Study (SWFFS), co-chaired the Southwest Florida Regional Restoration Coordination Team (SWF RRCT), and served on the Science Coordination Group (SCG). Staff have proposed methods to develop water quality targets for the Charlotte Harbor and Estero Bay regions and have worked with SFWMD to refine these methods and ensure they are incorporated into other SWFFS efforts such as HIS models.	
<b>Description:</b> The CHNEP will provide staff support to develop and implement Everglades Restoration. This includes serving on the SWFFS Study Group and its subcommittees, co-chairing the SWF RRCT, and participating on the SCG on behalf of Southwest Florida. Deliverables of the SWF RRCT include a Science Plan update and a Restoration Plan. Although the CHNEP will not provide primary support of restoration mapping outside the study areas, the CHNEP will host the database and shape files in support of the entire SWF RRCT area.	
<b>Deliverables:</b>	<b>Target Dates:</b>
<ul style="list-style-type: none"> <li>• RRCT Science Plan Update</li> <li>• RRCT Restoration Plan Update</li> <li>• Presentation of Priorities</li> <li>• SCG Participation</li> <li>• Participation in and support for the SWFFS</li> </ul>	<ul style="list-style-type: none"> <li>• September</li> <li>• September</li> <li>• September</li> <li>• On-going</li> <li>• On-going</li> </ul>

<b>4.3 Estero Bay Watershed Program</b>	
<b>Objective:</b> The first phase of this project is to describe and evaluate the regional success of the use of wetland mitigation strategies implemented in the Estero Bay watershed.	
<b>Previous Work:</b> The Estero Bay Agency for Bay Management (ABM) was established in 1996 as a follow-on the Settlement Agreement reached regarding permit issues associated with Florida Gulf Coast University. In 1997, the U.S. Corps of Engineers (USACE) initiated an EIS for Southwest Florida to improve USACE review of permit applications under Section 404 of the Clean Water Act. In 1999, the South Florida Water Management District completed the Estero Bay and Watershed Management and Improvement Plan. The plan developed land and water management strategies to achieve water quality and quantity objectives for Estero Bay. More recently, in 2003 the SFWMD Governing Board designated Lower Charlotte Harbor a priority Surface Water Improvement Program waterbody, which includes Estero Bay. In 2004, Lee County began implementing the Lee County Master Mitigation Plan (LMMP). The LMMP provides a systematic assessment of habitat, water quality, rehydration and wetland preservation needs for Lee County. The LMMP was developed by a multidisciplinary and multi-agency task team. The LMMP identified potential sites for future mitigation within the Estero Bay watershed. In 2005, a study of the Density Reduction Groundwater Recharge (DRGR) area of southern Lee County was completed. As part of the study, Surface Water Flow-ways for all of Lee County have been mapped to aid in review of sensitive environmental areas.	
<b>Description:</b> Staff will continue and complete work on this project and additional tasks of this project. New tasks include preparation and presentation of project findings at the Estero bay Agency on Bay Management Spring 2007 Workshop, drafting text for 2 of the recommended reforms and drafting a white paper that presents a prioritization and analysis for implementing recommended reforms.	
<b>Deliverables:</b> <ul style="list-style-type: none"> <li>• Progress reports every 6 months post-award.</li> <li>• A final report at the conclusion of the project , with geographic data, analysis, conclusion, and recommendations</li> <li>• Workshop</li> <li>• White paper and drafting text for 2 priority reforms</li> <li>• GIS coverages of wetland impacts and mitigation sites will be provided. The coverages will be compatible with the Environmental Systems Research Institute, Inc. (ESRI) software.</li> <li>• Geographic data tabulation, comparisons, and analyses of wetland impacts and mitigation actions will be provided with progress reports and the final report.</li> </ul>	<b>Target Dates:</b> <ul style="list-style-type: none"> <li>• Semi-annually</li> <li>• Sept. 2007</li>   <li>• Spring 2007</li> <li>• Sept. 2007</li> <li>• Sept. 2007</li>   <li>• Sept. 2007</li> </ul>
<b>Actions proposed CCMP: FW-I, HA-I, HA-P, SG-G, SG-J, WQ-L</b>	<b>Funding:</b> <b>EPA: \$10,000</b> <b>Lee County: \$25,000</b>

<b>4.4 Hendry Creel Septic Tank Program</b>	
<b>Objective:</b> : : Pilot project to work in partnership with a neighborhood within the Hendry Creek watershed to inventory and monitor septic system functioning..	
<b>Previous Work:</b> Hendry Creek is a 303d listed waterbody in the Charlotte Harbor National Estuary Program study area. It is impaired for dissolved oxygen and chlorophyll a, with the causative factors being nutrients. Estero Bay, Florida's very first Aquatic Preserve and an historic shellfish harvesting area, is the receiving waters for Hendry Creek. It is suspected that septic system failures are contributing to the impairment of Hendry Creek. Most of the residential units located in the Hendry Creek sub-basin utilize onsite wastewater treatment systems.	
<b>Description:</b> CHNEP staff are working with the SFWMD to refine the following project description. Charlotte Harbor NEP proposes to work with the chosen community and adapt the U.S. Environmental Protection Agency's voluntary septic tank management program to improve the water quality of Hendry Creek and remove it from the 303d list. This project will assist the local community with creating a sustainable management program for their septic tanks. This will include extensive outreach and education to the community and investigation into the efficacy of establishing a financing tool to fund on-going operations and maintenance functions. Lessons learned from this project will be transferred within the Charlotte Harbor NEP study area to other impaired WBIDs that are suspect for septic system failure. The education and outreach materials developed will be adaptable to other communities within the Charlotte Harbor NEP study area.	
<b>Deliverables:</b> <ul style="list-style-type: none"> <li>• A final report at the conclusion of the project , with analysis, conclusion, and recommendations</li> <li>• Outreach Workshops</li> <li>• Septic system testing</li> <li>•</li> </ul>	<b>Target Dates:</b> <ul style="list-style-type: none"> <li>• Sept. 2007</li> <li>• Throughout project duration</li> <li>• Winter and spring 2007</li> </ul>
<b>Actions:</b> <i>proposed CCMP:HA-I, WQ-B, WQ-H, WQ-L</i>	<b>Funding:</b> SFWMD: \$50,000

## **Task 5: Advocacy and Legislative Action**

The CHNEP Policy Committee is comprised of elected officials and agency heads of federal, state, regional, county, and city agencies. These are the very agencies that will be the likely recipients of CHNEP advocacy and legislative action. The advocacy position represents a great commitment to partnership and trust between the CHNEP partners.

The goals of the CHNEP's advocacy and legislative action stance are:

- To implement the quantitative objectives and priority actions of the adopted *Comprehensive Conservation and Management Plan (CCMP)*,
- To provide policy-makers with a source of review and comment from an organization which represents the considered opinions of diverse interests, and
- To provide a voice for natural systems within the study area watersheds based on the best scientific information available.

Subtasks include:

- 5.1 Legislative Agenda
- 5.2 Advocacy and Review Procedures
- 5.3 Federal Consistency Review
- 5.4 Leveraged Grants

<b>5.1   Legislative Agenda</b>	
<b>Objective:</b> To provide a structure for pursuing legislative action to support the implementation of the Comprehensive Conservation and Management Plan (CCMP).	
<b>Previous Work:</b> The Management Conference approved the CHNEP Legislative Agenda in 2003. This Agenda is presented to the both the State and Federal legislative delegations annually. In FY2005-2006, the Management Conference recommended that CHNEP develop letters of support for two State bills, and one Federal bill. In addition, the Management Conference directed staff to develop model language for land development code for pervious low volume parking lots to be used throughout the Study Area. CHNEP staff have been actively working to develop a closer relationships with the Federal elected officials that represent the Study Area.	
<b>Description:</b> The Legislative Agenda is a formal document that presents projects, identified by the Management Conference, that implement the CCMP and which require additional support, either fiscal or policy, in order to be successfully completed. The Legislative Agenda is updated and revised to reflect the current and anticipated legislative opportunities for CHNEP to ensure that the CCMP is considered by elected officials when policy and funding decisions are being made. Moreover, with the updating of the CCMP throughout 2005 and 2006, it is anticipated that the Legislative Agenda will also undergo review and revision by the Management Conference. Additionally, the Legislative Agenda is presented to policy-makers and decision-makers annually. Membership with the Association of National Estuary Programs (ANEP) and attendance at its meetings is encouraged by EPA. However, a portion of the \$4,500 dues is not eligible for EPA funding. Finally, this task also supports the Legislative Subcommittee. Legislative Priorities include:	
<b>State</b>	
<ul style="list-style-type: none"> <li>• Oppose Water Markets</li> <li>• Support Reservations for Caloosahatchee, Peace River, and Estero Bay</li> <li>• Support Funding of: <ul style="list-style-type: none"> <li>land acquisition</li> <li>law enforcement</li> <li>restoration</li> <li>Lake Hancock</li> </ul> </li> <li>• SFWMD Initiatives</li> <li>• Modify Maintenance Dredging Exemptions</li> </ul>	
<b>Federal</b>	
<ul style="list-style-type: none"> <li>• Support EIS of Peace River Basin, with DEP/WMD support</li> <li>• Support Funding of: <ul style="list-style-type: none"> <li>land acquisition</li> <li>restoration</li> <li>Lake Hancock Restoration</li> </ul> </li> </ul>	
<b>Deliverables:</b>	<b>Target Dates:</b>
<ul style="list-style-type: none"> <li>• Revised FY2007 Legislative Agenda by mid-autumn</li> <li>• Present agenda to State and Federal Legislative Delegations throughout the CHNEP study area</li> <li>• Tracking of relevant legislation</li> <li>• Electronic updates to Subcommittee members</li> <li>• Letters of support as appropriate to legislators and policy makers</li> <li>• ANEP membership</li> </ul>	<ul style="list-style-type: none"> <li>• Mid-November</li> <li>• November- March</li> <li>• As Appropriate</li> <li>• As Appropriate</li> <li>• As Opportunities Arise</li> </ul>
	January

<b>5.2   Advocacy and Review Procedures</b>	
<b>Objective:</b> To implement the Advocacy and Review Procedures adopted in February 2003.	
<p><b>Previous Work:</b> On February 21, 2003, the Policy Committee adopted the Advocacy and Review Procedures that were developed by the Management Conference. Since adoption of the Advocacy and Review Procedures, CHNEP has submitted 7 letters of either support or comment to other agencies. The topics of the letters: Corp and South Florida Water Management District Lake Okeechobee Protocols, Corps Phosphate Mine Inquiry, Caloosahatchee Coordination, Charlotte Harbor Total Maximum Daily Loads (TMDL) and Pollutant Load Reduction Goals (PLRG), SWANCC Request, Funding Request, and Babcock Acquisition.</p> <p>In FY 05, letters were sent to EPA (Gypsum Research), SFWMD (WSE Regs), SWFWMD (SWUCA), and ACOE (404 permit).</p> <p><b>Description:</b> The Management Conference developed a list of major categories of actions that may require CHNEP review, comment or letters of support. Staff will continue to develop letters of review, comment, support and inquiry as directed by the Management Conference. Based on the Advocacy and Review Procedures, eleven categories of actions include:</p> <ul style="list-style-type: none"> <li>• Environmental Land Acquisition and Conservation.</li> <li>• Water Quality rules.</li> <li>• Hydrology rules.</li> <li>• Changes in structures specified in HA-4.</li> <li>• Projects which improve water quality of Lake Hancock and the water exiting the lake.</li> <li>• Projects which significantly affect at least one of the habitats listed in FW-2.</li> <li>• Projects which significantly affect hydrology in sub-basins.</li> <li>• Rules which reduce propeller damage to seagrass beds.</li> <li>• Projects that remove invasive exotic species.</li> <li>• Legislation that restricts citizen participation on environmental issues.</li> <li>• General permits affecting waterways.</li> </ul> <p>For FY '06, additional advocacy will include:</p> <ul style="list-style-type: none"> <li>• Participation in the Lower West Coast Supply Plan development</li> <li>• Review of local comprehensive plans by the CHNEP partnership for implementation of the CCMP.</li> </ul>	
<p><b>Deliverables:</b></p> <ul style="list-style-type: none"> <li>• Review, Comment, Support and Inquiry Letters</li> <li>• Public Testimony</li> <li>• Review of at least 4 Comprehensive Plans</li> </ul>	<p><b>Target Dates:</b></p> <ul style="list-style-type: none"> <li>• As required</li> <li>• As Appropriate</li> <li>• By end of FY2007</li> </ul>

<b>5.3 Federal Consistency Review</b>	
<b>Objective:</b> To provide federal consistency review as required by EPA and incorporate the existing federal consistency review process of the State Clearinghouse as set forth in the CCMP on page 219.	
<b>Previous Work:</b> The CHNEP developed a Federal Consistency Review Report in 1999 which sets forth a procedure for ensuring compliance with the USEPA requirements. In 2000 and 2003, the Management Conference approved the submission of a letter to the U.S. Corps of Engineers requesting a Programmatic EIS regarding the permitting and funding activities within the Peace and Myakka River Basins of the Greater Charlotte Harbor watershed.	
<p><b>Description:</b> CHNEP staff will continue to implement the two step strategy described in the 1999 Federal Consistency Report: early coordination and State Clearinghouse consistency review as directed by the Management Conference. The 2003, Advocacy and Review Procedures Technical Report 03-1 sets forth Federal actions that the CHNEP will review for consistency with the CCMP. Federal Consistency Review may include:</p> <ul style="list-style-type: none"> <li>• Direct federal activities, including federal licenses, or permits to federal applicants, and federal financial assistance to private applicants</li> <li>• Federal licenses and permits to non-federal applicants</li> <li>• Outer Continental Shelf (OCS) exploration, development, and production activities</li> <li>• Federal financial assistance to state or local governments</li> </ul>	
<p><b>Deliverables:</b></p> <ul style="list-style-type: none"> <li>• Early coordination with parties prior to Clearinghouse submission</li> <li>• Comments to State Clearinghouse</li> </ul>	<p><b>Target Dates:</b></p> <ul style="list-style-type: none"> <li>• As appropriate, but prior to submission of project to Clearinghouse</li> <li>• As required, within 30 days of receiving notification from the State Clearinghouse</li> </ul>

<b>5.4   Leveraged Grants</b>	
<b>Objective:</b> To supplement implementation of the Comprehensive Conservation and Management Plan (CCMP) through funding of projects from sources other than the EPA Cooperative Agreement.	
<b>Previous Work:</b> The CHNEP Management Conference adopted the first CCMP in 2000. The EPA approved the CCMP in 2001. In 2005-2006, CHNEP continued to provide staff assistance to the Babcock Preservation Partnership, Inc., to assist with obtaining federal funding to support the acquisition, preservation, conservation and management of the Babcock Ranch. Staff developed 2 projects for federal funding at \$4 million. Staff identified grant opportunities for partners to fund projects identified in the Research Needs Inventory. At the time of the Workplan development, CHNEP staff is working with partners to identify funding for land acquisition and restoration.	
<b>Description:</b> CHNEP staff are actively applying for and winning funding through grants from Federal, State and private organizations for our partner organizations to support the implementation of the CCMP. The 2004 Research Needs Inventory, in conjunction with the CCMP, guides CHNEP staff when reviewing grant opportunities. CHNEP staff assist partners in identifying, applying for and administering grants from various sources, including Federal and State agencies and private foundations. Staff also search for funding for specific projects that are being conducted by partners, notify partners of grant opportunities and work with partners to form teams and partnerships for proposal submissions. Staff is maintaining a grants database to track annual grant opportunities to facilitate developing teams and projects in advance of the Request for Application announcements.	
<b>Deliverables:</b>	<b>Target Dates:</b>
<ul style="list-style-type: none"> <li>• Database of Grant Opportunities</li> <li>• Email notification of available grants</li> <li>• Support letters for inclusion with grant applications</li> <li>• Draft and Final Grant applications</li> </ul>	<ul style="list-style-type: none"> <li>• On going</li> <li>• Ongoing, usually bi-monthly</li> <li>• As Requested</li> <li>• As Appropriate</li> </ul>

**Table 2: On-Going Projects**

Project	Contractor/ Organization	Action	Deliver- ables	Date Let	Project Total	Contract Amount	Contract Balance as of 3/30/06
<b>Research and Restoration Contracts</b>							
Hydrologic Conditions Analysis	URS	HA-H	Report, GIS	7/1/2003	\$79,961	\$79,961	\$28,079
Benthic Invertebrate Species Richness	Mote Marine Lab	FW-2	Report, Database	4/30/2004	\$79,949	\$79,949	\$27,455
Historic Hydrologic Subbasin Boundary Map	Gurr Consulting	HA-3	GIS Shapefile	Not let	\$80,000	not executed	\$80,000
Historic Coastal Benthic Habitat	Photo Science, Inc.	FW-2	GIS Shapefile	Not let	\$90,000	not executed	\$90,000
Water Quality Analysis Update	Janicki Environmental	WQ- C/D	Report, Database	6/1/2005	\$81,200	\$81,200	\$81,200
CHEC WQ website expansion	CHEC	pg 214	website	1/1/2005	\$17,000	\$17,000	\$8,000
ArcIMS website	SWFRPC	pg 214	website	12/1/2005	\$50,000	\$50,000	\$50,000
Estero Bay Nutrient Management	EBNMP	WQ-N	Report	10/1/2003	\$40,000	\$40,000	\$3,282
Oyster Restoration	FGCU	FW-V	Report	1/13/2004	\$57,000	\$57,000	\$41,979
Best Management Practices	Lee County	WQ- E/M	Manual	4/6/2004	\$250,000	\$250,000	\$225,588
CHEVWQMN	FDEP	WQ-B	Report	2/22/2006	\$102,000	\$101,000	\$101,000
Impact of Marsh Grass in Myakka	University of Florida	FW-A	Report	7/1/2004	\$10,775	\$10,775	\$10,775
Nitrogen from Sludge Spreading	CHEC	WQ- C/D	Report	6/1/2005	\$10,126	\$10,126	\$10,126
Burrowing Owl Survey	CC Friends of Wildlife	FW- 2(g)	Report	6/1/2005	\$3,575	\$3,575	\$3,575
Expand Scallop Restn in PIS	Mote Marine Lab	FW-R	Report	6/1/2005	\$11,923	\$11,923	\$7,068
Vallisneria Restore	Mote Marine Lab	FW-R	Report	6/1/2005	\$12,169	\$12,169	\$11,154
Nonnative Fish Assessment	Mote Marine Lab	FW-R	Report	6/1/2005	\$34,000	\$17,333	\$6,041
Pop Ash Creek Preserve Rstn	Lee County Parks & Rec	FW-4	Report	Not let	\$32,917	\$16,000	\$16,000
Identities and effects of ecoestrogens in Caloosahatchee	Mote Marine Lab	WQ-1	Report	Not let	\$38,471	\$19,120	\$19,120
Microbes critical to enhancement of seagrass restn	SCCF Marine Lab	FW- 2(a)	Report	Not let	\$37,127	\$18,458	\$18,458
Special Issue of <i>Florida Scientist</i>	Florida Academy of Science	pg 214	Special Issue	not let	\$20,000	\$20,000	\$20,000
Hurricane Special Issue of <i>Estuaries and Coasts</i>	Estuarine Research Federation	pg 214	Special Issue of <i>Estuaries and Coasts</i>	not let	\$30,000	\$5,000	\$5,000
<b>Total Research and Restoration:</b>					<b>\$1,168,193</b>	<b>\$900,589</b>	<b>\$863,901</b>

<b>Public Outreach Contracts</b>							
Children's Book	undetermined	pg 210	Publication	11/0/05	\$20,000	\$20,000	\$20,000
Guide of Environmental Places	undetermined	pg 210	Publication	not let	\$20,000	\$20,000	\$20,000
Citizens Guide	undetermined	pgs 210	Publication	not let	\$18,000	\$18,000	\$18,000
Peace River Management Conference	Lakes Education/Action Drive		Conference	not let		\$3,500	\$3,500
CCMP Update	undetermined		CCMP	not let	\$12,000	\$12,000	\$12,000
<b>Public Outreach Grants</b>							
Outdoor Study along the Peace River	Fort Meade M/S HS	WQ-B	Report	5/18/2004	\$3,000	\$3,000	\$3,000
Incorporating Public Input on Sea Turtle Sightings	Mote Marine Laboratory		Report	3/22/2005	\$25,000	\$3,000	\$3,000
FYN Highlights at Model Homes	Lee County Overall Extension Advisory Board		Report	3/28/2005	\$5,002	\$2,947	\$2,947
Nature Resource Guide	Crowley Museum & Nature Center		Report	5/17/2005	\$2,995	\$2,995	\$2,995
FYN Water Conservation Workshops	Polk County Extension Service		Report	9/21/2005	\$3,642	\$3,000	\$3,000
FYN Builder Developer Program	ELM West Coast, Inc.		Report	11/24/2006	\$70,500	\$3,000	\$3,000
Estuary Neighborhood: A Coloring Book for Southwest Florida Estuarine Community	Charlotte Harbor Environmental Center		Report	12/20/2005	\$2,996	\$2,996	\$2,996
Hispanic Community Outreach Program	Ernesto Lasso de la Vega		Report	12/20/2005	\$2,240	\$2,240	\$2,240
Exploring WATER MATTERS!	Explorations V Children's Museum		Report	1/3/2006	\$2,976	\$2,976	\$2,976
EBNMP Stormwater Pond Management Program	Estero Bay Nutrient Management Partnership		Report	1/20/2006	\$3,000	\$3,000	\$3,000
J Colin English and the Creek Kids	J. Colin English Elementary School		Report	2/2/2006	\$2,774	\$2,774	\$2,774
Native Plant Maze and Demonstration Site	Charlie & Darlene Foster		Report	3/2/2006	\$3,000	\$3,000	\$3,000
Peace River Study 2006	Hardee County Schools Outdoor Classroom		Report	not let	\$2,865	\$2,865	\$2,865
<b>Public Outreach Total:</b>					<b>\$299,990</b>	<b>\$111,293</b>	<b>\$111,293</b>
<b>Total Contacts:</b>					<b>\$1,368,183</b>	<b>\$1,011,882</b>	<b>\$975,194</b>

**Table 2.1: Ongoing Projects Funding Sources**

Project	Contractor/ Organization	EPA	SWFWMD	SFWMD	Undesignated	Total
<b>Research and Restoration Contracts</b>						
Hydrologic Conditions Analysis	URS				\$28,079	
Benthic Invertebrate Species Richness	Mote Marine Lab		\$11,487		\$15,968	
Historic Hydrologic Subbasin Boundary Map	Gurr Consulting		\$35,000		\$45,000	
Historic Coastal Benthic Habitat	Photo Science, Inc.		\$50,000	\$30,000	\$10,000	
Water Quality Analysis Update	Janicki Environmental		\$34,000		\$47,200	
CHEC WQ website expansion	CHEC				\$8,000	
ArcIMS website	SWFRPC		\$25,000		\$25,000	\$50,000
Estero Bay Nutrient Management	EBNMP	\$3,282				\$3,282
Oyster Restoration	FGCU	\$41,979				\$41,979
Best Management Practices	Lee County	\$225,588				\$225,588
CHEVWQMN	FDEP		\$48,000		\$53,000	\$101,000
Impact of Marsh Grass in Myakka	University of Florida		\$5,279		\$5,496	\$10,775
Nitrogen from Sludge Spreading	CHEC		\$10,000		\$126	\$10,126
Burrowing Owl Survey	CC Friends of Wildlife				\$3,575	\$3,575
Expand Scallop Restn in PIS	Mote Marine Lab				\$7,068	\$7,068
Vallisneria Restn in CR	Mote Marine Lab				\$11,154	\$11,154
Nonnative Fish Assessment	Mote Marine Lab		\$5,708		\$333	\$6,041
Pop Ash Creek Preserve Rstn	Lee County Parks & Rec				\$16,000	\$16,000
Identities and effects of ecoestrogens in Caloosahatchee	Mote Marine Lab				\$19,120	\$19,120
Identification of microbes critical to enhancement of seagrass restn	SCCF Marine Lab				\$18,458	\$18,458
Special Issue of <i>Florida Scientist</i>	Florida Academy of Science		\$10,000		\$10,000	\$20,000
Hurricane Special Issue of <i>Estuaries and Coasts</i>	Estuarine Research Federation		\$2,500		\$2,500	\$5,000
<b>Total Research and Restoration:</b>		<b>\$270,850</b>	<b>\$236,974</b>	<b>\$30,000</b>	<b>\$326,077</b>	<b>\$863,901</b>

Project	Contractor/ Organization	EPA	SWFWMD	SFWMD	Undesignated	Total
<b>Public Outreach Contracts</b>						
Children's Book	undetermined	\$20,000				\$20,000
Guide of Environmental Places	undetermined	\$20,000				\$20,000
Citizens Guide	undetermined	\$18,000				\$18,000
Peace River Management Conference	Lakes Education/Action Drive	\$3,500				\$3,500
CCMP Update	undetermined	\$12,000				\$12,000
State of the Harbor	undetermined	\$20,000				\$20,000
<b>Public Outreach Grants</b>						
Outdoor Study along the Peace River	Fort Meade M/S HS	\$3,000				\$3,000
Incorporating Public Input on Sea Turtle Sightings	Mote Marine Laboratory	\$3,000				\$3,000
FYN Highlights at Model Homes	Lee County Overall Extension Advisory Board	\$2,947				\$2,947
Nature Resource Guide	Crowley Museum & Nature Center	\$2,995				\$2,995
FYN Water Conservation Workshops	Polk County Extension Service	\$3,000				\$3,000
FYN Builder Developer Program	ELM West Coast, Inc.	\$3,000				\$3,000
Estuary Neighborhood: A Coloring Book for Southwest Florida Estuarine Community	Charlotte Harbor Environmental Center	\$2,996				\$2,996
Hispanic Community Outreach Program	Ernesto Lasso de la Vega	\$2,240				\$2,240
Exploring WATER MATTERS!	Explorations V Children's Museum	\$2,976				\$2,976
EBNMP Stormwater Pond Management Program	Estero Bay Nutrient Management Partnership	\$3,000				\$3,000
J Colin English and the Creek Kids	J. Colin English Elementary School	\$2,774				\$2,774
Native Plant Maze and Demonstration Site	Charlie & Darlene Foster	\$3,000				\$3,000
Peace River Study 2006	Hardee County Schools Outdoor Classroom	\$2,865				\$2,865
<b>Public Outreach Total:</b>		<b>\$131,293</b>	<b>\$0</b>	<b>\$0</b>	<b>\$0</b>	<b>\$131,293</b>
<b>Total Contacts:</b>		<b>\$402,143</b>	<b>\$236,974</b>	<b>\$30,000</b>	<b>\$326,077</b>	<b>\$995,194</b>

# Administrative and Financial

## Description of Grants

Although Table 2 provided the list of grants from the NEP to local entities within its table, here are the grant descriptions, with amount provided, organization conducting the work, purpose, deliverables, and completion dates.

### Research and Restoration Partners Grants

Research and Restoration Partners Grants are an opportunity for program partners to approach us for support for projects they hope will implement our CCMP goals. These grants encourage innovative research and restoration or provide seed money to initiate programs, and the projects typically take a year or more to complete. Projects begin as soon as the contract is signed and notarized by both parties, usually in April-May of each year.

#### *Fiscal Year 2006*

**1. Project Name:** Melaleuca Removal from Pop Ash Creek Preserve.

**Project Partners:** Lee County Parks & Recreation and Charlotte Harbor NEP

**Total Cost:** \$ 32,917.00

**NEP Funding:** \$16,000

**Completion Date:** September 30, 2007

Pop Ash Creek is a 307-acre environmental preserve purchased in 2003 that is dominated by wet and mesic flatwoods. The project will remove approximately 63.5 acres of Melaleuca from the northern portion of the preserve by mechanical, prescribed fire, hand removal and herbicidal methods. Addresses FW-4 of CCMP.

**Deliverables:** Final Report

**2. Project Name:** Identities and ecological effects of ecoestrogens present in the tidal Caloosahatchee River.

**Project Partners:** Mote Marine Lab and Charlotte Harbor NEP

**Total Cost:** \$38,471

**NEP Funding:** \$19,120

Due to their ability to impair hormone-regulated processes such as development, reproduction and immune function, environmental pollutants that mimic the female sex hormone estrogen (i.e. "ecoestrogens") pose significant health risks to terrestrial and aquatic organisms. In a previous study, the researcher determined the presence of elevated concentrations of ecoestrogens in the Caloosahatchee River. This follow-up study will identify the specific chemicals and if the concentrations of these compounds are high enough to impact local wildlife. Addresses WQ-1 of CCMP.

**Deliverables:** Final Report

**3. Project Name:** Identification of microbes critical to the enhancement of seagrass restoration.

**Project Partners:** Sanibel-Captiva Conservation Foundation, Marine Lab and Charlotte Harbor NEP

**Total Cost:** \$37,127

**NEP Funding:** \$18,458

The health and quality of seagrass habitats have been defined by density and species composition of seagrasses and the diversity of juvenile fishes in seagrass habitats. These coarse-scale measurements of community responses are not sensitive to short-term stressors, such as pulsed releases of freshwater from S-79. This project would take advantage of DNA-based technologies to provide a rapid, and extremely accurate benthic diversity index. This index is based on the bacteria that live in and around seagrass roots. By identifying the “key” microbes associated with enhanced plant performance under high sulfide conditions, scientists could simply follow the road signs indicative of high quality habitat. Similarly, microbes associated with decreased plant performance can be rapidly detected by their DNA sequence and actions could be taken to improve habitat quality. Addresses FW-2(a) of CCMP.

**Deliverables:** Final Report

### *Fiscal Year 2005*

**1. Project Name:** Expanding Bay Scallop Restoration in Pine Island Sound Using Competent Larvae

**Project Partners:** Mote Marine Laboratory and Charlotte Harbor NEP

**Total Cost:** \$27,001

**NEP Funding:** \$11,923

**Completion Date:** September 30, 2006

This project will expand on efforts to reestablish bay scallop (*Argopecten irradians*) populations in the Pine Island Sound area through the use of an innovative stock enhancement strategy that proved successful in a project conducted in 2003. In compliance with this strategy, adult bay scallops will be transported from the study area to Bay Shellfish Company, a commercial shellfish aquaculture facility. At this facility, they will be conditioned and induced to spawn. Once they have initiated the process of metamorphosis, they will be transported to SCCF Marine Laboratory where they will be acclimated for release to three strategic locations in the Pine Island Sound area: North Pine Island Sound, J.N. “Ding” Darling National Wildlife Refuge, and South Pine Island Sound. Immediately, they will be assessed for larval settlement and recruitment. Juvenile abundance will then be evaluated during the winter, and adult abundance will be assessed the following summer (2006). Lastly, the densities of scallops at each site will be compared to the densities recorded before the restoration effort. Addresses FW-R of CCMP.

**Deliverables:** Final Report

**2. Project Name:** Does Nitrogen from Sludge Farm Runoff Persist in the Charlotte Harbor Study Area?

**Project Partners:** Charlotte Harbor Environmental Center and Charlotte Harbor NEP

**Total Cost:** \$25,234

**NEP Funding:** \$10,126

**Completion Date:** September 30, 2007

Residual sludge produced by domestic waste water treatment is often disposed of by land application. The contributions of nitrogen from this source should be monitored to avert coastal nutrient enrichment. This project will measure the presence and extent of sludge nitrogen through the use of stable nitrogen isotope analysis, based on the degree of difference between the sludge and background nitrogen isotope ratios. The methods for this project include seasonal sampling of both nitrogen and the stable nitrogen isotope ratio in filtered water, phytoplankton, and macrophytes from stations along the Peace River, Horse Creek, and selected tributaries

which may be impacted by sludge spreading. This project will produce maps of the area affected by sludge nitrogen, and the amount of sludge nitrogen assimilated by different components of the ecosystem. This study may also be of further use as stable nitrogen isotope ratios can be combined with stable carbon and sulfur ratios to assess the effects of sludge spreading in trophic interactions and larger questions of Charlotte Harbor study area ecology. Addresses WQ-C/D of CCMP.

**Deliverables:** Final Report

**3. Project Name:** *Vallisneria americana* Restoration within the Caloosahatchee River

**Project Partners:** Mote Marine Laboratory and Charlotte Harbor NEP

**Total Cost:** \$24,515

**NEP Funding:** \$12,169

**Completion Date:** September 30, 2006

The drought of 2000 severely reduced the extent of the submerged aquatic vegetation, *Vallisneria Americana* (tape grass or wild celery), in the tidal Caloosahatchee River. Although *Vallisneria* has since returned to the river, its biomass is greatly reduced. This study seeks to assess the efficacy of restoring the once dominant species using captive-raised plants.

Specifically, the strategy will use mature rosettes, immature rosettes, seedlings, and seeds to establish a viable population of *Vallisneria* and ultimately enhance fish and wildlife habitat. Addresses FW-R of CCMP.

**Deliverables:** Final Report

**4. Project Name:** Burrowing Owl Survival and Dispersal Study

**Project Partners:** Cape Coral Friends of Wildlife and Charlotte Harbor NEP

**Total Cost:** \$7,550

**NEP Funding:** \$3,575

**Completion Date:** September 30, 2006

Burrowing owls in Cape Coral are being studied by Florida Fish and Wildlife Conservation Commission biologists as part of a five-year (5) telemetry project. In the spring of 2004 Fish and Wildlife personnel placed 56 radio transmitters on young owls in Cape Coral. These owls are being monitored weekly through the nesting and dispersal periods, and will continue to be monitored into late winter. Radio tracking data are being collected on juvenile owl survival, dispersal, and their ability to adapt to rapidly changing habitat conditions due to development. These data will hopefully provide information to assist biologists and city planners to better manage burrowing owl populations in this region. This project will help provide funds to purchase 50 additional radio transmitters to be placed on young owls in the spring of 2005, allowing sufficient sampling to provide for sound statistical analyses. The results of the study will provide much needed information about owl survival and dispersal during and following the nesting season, and into the winter months. Addresses FW-2(g) of CCMP.

**Deliverables:** Final Report

**5. Project Name:** Do Altered Coastal Habitats Promote Non-Native Fish Invasions?

**Project Partners:** Mote Marine Laboratory and Charlotte Harbor NEP

**Total Cost:** \$37,409

**NEP Funding:** \$17,333

**Completion Date:** September 30, 2006

This project seeks to determine the extent that habitat alterations (conversion of upland habitats to impervious surface, which alters freshwater flow; construction of containment ponds; habitat loss) support populations of non-native fishes that then act as sources for invasions into estuarine

habitats, and by so doing help formulate strategies for controlling the spread of these species. To analyze this relationship sub-dermal PIT tags will be placed on random *Cichlasoma urophthalmus* residing in the study creeks and altered upland habitats adjacent to the study creeks. A constant-reading antenna system will be placed between altered and estuarine habitats to monitor passage of tagged individuals. Routine sampling with seines will also be conducted in each study creek. Together, the antenna and seine capture data will allow the determination of the extent to which *C. urophthalmus* favor creeks associated with altered habitat as opposed to those associated with unaltered habitat. Addresses FW-4 and FW-R of CCMP.

**Deliverables:** Final Report

### *Fiscal Year 2004*

**1. Project Name:** Community Level Impact of West Indian Marsh Grass on the Myakka River Watershed and Evaluation of a Potential Management Strategy

**Project Partners:** University of Florida, Florida Department of Environmental Protection—Myakka River State Park and Charlotte Harbor NEP

**Total Cost:** \$ 21,948

**NEP Funding:** \$ 10,775

**Completion Date:** September 30, 2006

The South American grass, *Hymenachne amplexicaulis*, is invading wetlands of the Charlotte Harbor watershed. The marsh grass invades river banks, marshes and other areas which seasonally flood and grows from stolons, which can be fragmented by flowing water and transported great distances downstream. Therefore, the seasonal flooding associated with summer rainfall in Florida facilitates the spread of this aggressively invasive plant. The results of this invasion include the simplification of native plant communities leading to a reduction of biodiversity and altered hydrology. With this project, researchers at the University of Florida hope to: a) quantify the impact of *Hymenachne* on plant and arthropod communities, b) assess the invasiveness of *Hymenachne* in different seasons and c) determine the effectiveness of herbicides and burning as a mean of controlling *Hymenachne*. The researchers will use monthly ground sampling in plots infested and uninfested with *Hymenachne* to assess changes in arthropod and plant communities. Aerial photography will be employed to assess the temporal invasiveness of *Hymenachne*. The end result will be a better understanding of the marsh grass and its health during different times of the year and environmental conditions so that better control and eradication methods can be developed. Addresses FW-4, FW-A, FW-C and FW-I/FW-T of CCMP.

**Deliverables:** Final Report

## **Public Outreach Grants**

Public Outreach Grants, which were previously known as mini-grants, typically take one year to complete. Projects begin as soon as the contract is signed and notarized by both parties. In FY06 the review process was modified, granting the Program Director authority to approve applications once approved by the CAC. This has allowed the projects to begin as early as December 2005.

### *Public Outreach Grants Initiated in Fiscal Year 2006*

#### **1. Turtle Talks Book**

Turtle Talks

Total Cost: \$6,272    NEP Funding: \$2,762

Working with authors, artists and educators, this teenager produced a booklet that features the Charlotte Harbor estuary and the marine lives that depend on its health. The booklet will be reprinted and given to students who participate in a Turtle Talk, an educational program designed to inform students and adults of the fragile nature of the local environment.

## **2. Lakeside Education Displays at Lake Parker**

Lakes Education/Action Drive

Total Cost: \$9,060    NEP Funding: \$3,000

The Peace River, the major tributary to Charlotte Harbor, has its headwaters in Polk County. While the people are enjoying the recreational and aesthetic opportunities of the lake, they can become more aware of the interconnection of the lakes in the Upper Peace River watershed with the entire Charlotte Harbor watershed. The displays include information on lake ecosystems and watersheds, water quality issues, and information on pollution.

## **3. Estuary Neighborhood: A Coloring Book for Southwest Florida Estuarine Community**

Charlotte Harbor Environmental Center

Total Cost: \$3,082    NEP Funding: \$2,996

Charlotte Harbor is a rapidly growing region. Because Southwest Florida is a new, unfamiliar territory for these new residents, many have little awareness of the local ecosystems and the human impact on the region's natural environment. CHNEP's efforts to restore and protect the Charlotte Harbor watershed would be addressed through a coloring book targeted at young children and adults as a parent/child interactive activity and focused on native Florida species and their roles in the estuarine environment. The coloring book would get children and parents excited and involved in the protection of the Charlotte Harbor estuarine ecosystem.

## **4. Sea Turtle Adventures: A 2006 Teachers Workshop**

Coastal Wildlife Club, Inc.

Total Cost: \$5,875    NEP Funding: \$3,000

An expanded two-day workshop will be offered in 2006 to increase teachers' awareness of coastal resources, including sea turtles and gopher tortoises.

## **5. Native Plant Maze and Demonstration Site**

Deluxe Trees and Shrubs in cooperation with DeSoto County Parks & Recreation

Total Cost: \$8,170    NEP Funding: \$3,000

A fun but functional native plant demonstration site – the first in DeSoto County – will be developed at one of the county parks. The maze will include a variety of Florida native plants and is expected to be of interest to young and old, gardeners and non-gardeners, tourists and residents. Signage will help those interested in planting their own yard with native plants.

## **6. Stormwater Pond Management Program**

Estero Bay Nutrient Management Partnership

Total Cost: \$5,596    NEP Funding: \$3,000

One-on-one training of best management practices for stormwater ponds and adjacent uplands will be provided to members of homeowner associations within the Estero Bay watershed in order to help residents reduce non-point pollution to protect the health of Estero Bay.

## **7. Exploring Water Matters!**

Explorations V Children's Museum, Inc.

Total Cost: \$4,164 NEP Funding: \$2,976

In 2005, a Water Matters! Interactive exhibit was created with support from an earlier CHNEP grant. This grant offers two-hour hands-on workshops to 16 classes of third to fifth grade Polk County students, thereby extending the learning value of the exhibits and increasing the children's understanding of Earth's limited resources and responsibility to conservation.

### **8. Peace River Study**

Hardee County Outdoor Classroom

Total Cost: \$11,165 NEP Funding: \$2,865

Students will be given an opportunity to learn about the Peace River basin and Charlotte Harbor watershed during a two-week canoe trip, building on knowledge learned during Outdoor Classroom trips offered during the school year. The students will collect data on how the hurricanes of 2004 have affected the Peace River, comparing these new observations against a similar study made prior to the hurricanes. They will take what they've learned and educate the public through the use of newspapers, web sites and newsletters.

### **9. Creek Kids**

J. Colin English Elementary School

Total Cost: \$4,248 NEP Funding: \$2,774

Fifth grade students become scientific analysts and stewards of three creeks in North Fort Myers. They will map, sample, test, collect and analyze data gathered on these creeks that flow to the Caloosahatchee and that are known for their high levels of pollution. They will then become educators – preparing the fourth grade students to continue the work the next year and sharing their knowledge in presentations to the community. This is the third year of support from the NEP.

### **10. Hispanic Community Outreach Program**

Ernesto Lasso de la Vega

Total Cost: \$2,240 NEP Funding: \$2,240

Information and programs offered by the CHNEP will be translated into Spanish in an effort to reach the growing Hispanic population in the region.

### **11. FYN Builder-Develop Program for Charlotte, Manatee and Sarasota Counties**

ELM West Coast, Inc.

Total Cost: \$73,500 NEP Funding: \$3,000

This program educates builders, developers, realtors, landscape architects/designers, irrigation contractors and others on how to protect the area's water resources while still creating and marketing attractive and desirable properties. Outreach efforts will include workshops, one-on-one meetings, media, reference material produced as publications and CDs, recognition programs such as Parade of Homes events, etc.

### *Public Outreach Grants Initiated in Fiscal Year 2005*

Of the 13 approved, four are still in progress.

### **1. Nature Resource Guide**

Crowley Museum and Nature Center

**Total Cost:** \$2,995

**NEP Funding:** \$2,995

A project will be undertaken by the Crowley Museum and Nature Center to create educational material to supplement guided nature tours and to serve as an online resource for those interested in southwest Florida flora and fauna. The educational material will consist of 75 laminated cards attached by a binding grommet. Each card will have a photo of one plant or animal accompanied by “fun facts” describing that plant/animal.

## **2. FYN Highlights at Model Homes**

Lee County Overall Extension Advisory Board

**Total Cost:** \$5,002

**NEP Funding:** \$2,947

To promote responsible landscaping techniques, Florida Yards and Neighborhoods of Lee County plans to persuade local builders and developers to equip model homes with Florida friendly yards exhibiting native plants.

## **3. Incorporating Public Input on Sea Turtle Sightings in Charlotte Harbor**

Mote Marine Laboratory

**Total Cost:** \$25,000

**NEP Funding:** \$3,000

In 2002, the Sea Turtle Conservation and Research Program was initiated by Mote Marine Laboratory to define critical habitats for three species of endangered sea turtles. To ensure public involvement and sufficient data acquisition, 10,000 double-sided business cards will be distributed to local marinas bearing the message “Wanted: Turtle Sightings”.

## **4. Florida Yards and Neighborhoods Water Conservation Workshops**

Polk County Extension Service

**Total Cost:** \$3,642

**NEP Funding:** \$3,000

The Florida Yards and Neighborhoods program of Polk County is planning to offer the public an educational workshop stressing the importance of water conservation, the negative effects of stormwater runoff, and the need to preserve water quality. Each participant will learn to construct and use rain barrels as a tool to reduce runoff pollution and conserve water.

### *Public Outreach Grants Initiated in Fiscal Year 2004*

Seventeen applications were approved but one was later withdrawn by the applicant. Of the remaining 16, one is still in progress.

#### **1. Project Name:** An Outdoor Study along the Peace River

**Applicant:** Fort Meade Middle-Senior High School

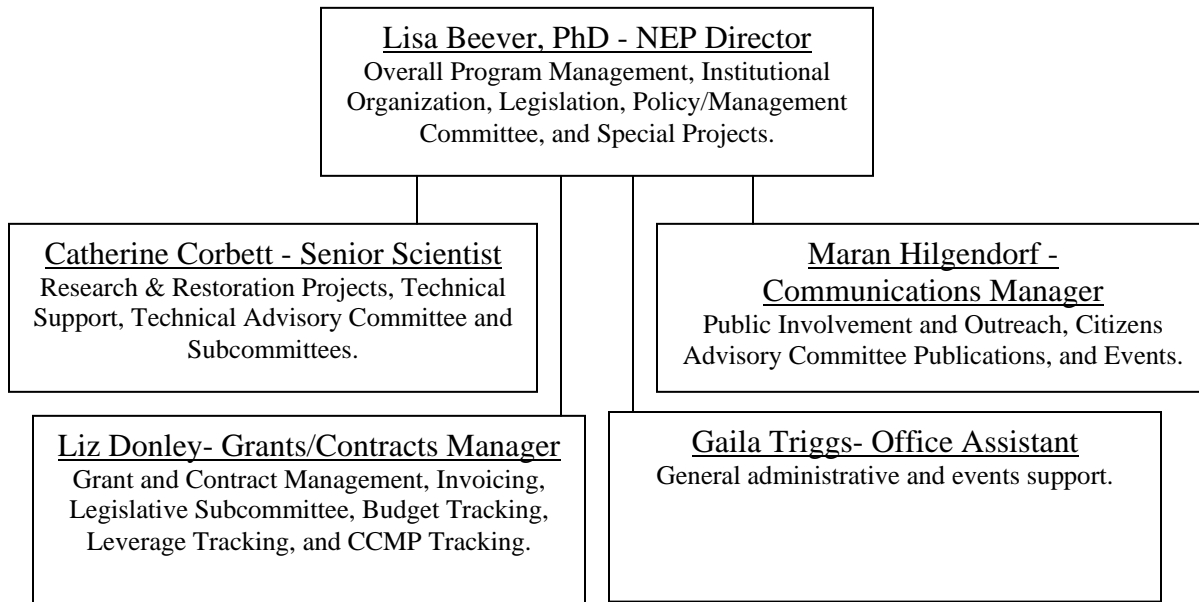
**Total Cost:** \$3,000

**NEP Funding:** \$3,000

An outdoor study area along the Peace River in Fort Meade will provide environmental science students at the school access to the river, a spring-fed pond, cypress swamp, hardwood forest and other ecosystems. Approximately 50 students in grades six through 12 will construct a wetlands survey, conduct various water tests on both the pond and river, prepare a report of their findings as well as introduce approximately 120 students in elementary grades to the life along the Peace River during field trips. This is the fourth year of support from the NEP. Addresses WQ-B.

## List Staff and Descriptions

The CHNEP staff includes 4 professional positions and one part-time office assistant position. As shown in the sub-task descriptions, many deliverables are prepared in-house. Several grants have been submitted to a variety of funding agencies. If the consolidated watershed grant for watershed coordination is approved, another staff position will be considered by the CHNEP Management Conference for a Watershed Coordinator, which will be supervised by the Senior Scientist.



To prepare cost estimate targets, staff estimates of time were developed. Table 3 identifies time estimates by staff member by task.

**Table 3: Expected Staff Time Allocations by Task**

Task	Title	Lisa	Catherine	Liz	Maran	Gaila	Other	FTE
1	Management Conference	30%	20%	37%	25%	30%		1.42
2	Outreach	12%	10%	2%	75%	20%	30%	1.49
3	Research	6%	45%	2%			50%	1.03
4	Restoration	47%	23%	4%			40%	1.14
5	Advocacy & Leg. Action	5%	2%	40%				0.47
		100%	100%	85%	100%	50%	120%	5.55

**Table 4: Total Leveraged (October 1, 2005-March 31, 2006)**

PROJECT Name	Role	Total Leverage	Leveraged Federal		Leveraged State		Leveraged Local		Leveraged Private	
			Cash	In-kind	Cash	In-kind	Cash	In-kind	Cash	In-kind
320 Match	Primary	\$972,171			\$290,000	\$560,000	\$106,250		\$15,921	
CHNEP Program Committee Support	Primary	\$49,449		\$1,684		\$13,101		\$14,635		\$20,029
Babcock Ranch Land Acquisition	Primary	\$3,079,000	\$3,000,000					\$400	\$75,000	
Turtle Talks Activity Book	Primary	\$3,510							\$3,510	
Estuary Neighborhood: A Coloring Book for Southwest Florida Estuarine Community	Primary	\$806							\$806	
	Primary								\$0	
Exploring WATER MATTERS!	Primary	\$1,188							\$1,188	
Sea Turtle Adventures 2006: A Teacher's Workshop	Primary	\$2875							\$2,875	
Lakeside Display Signs at Lake Parker Park	Primary	\$6,060							\$6,060	
EBNMP Stormwater Pond Management Program	Primary	\$2,596					\$2,596			
FYN Builder Developer Program	Primary	\$70,500							\$70,500	
J Colin English and the Creek Kids	Primary	\$1,474							\$1,474	
Native Plant Maze and Demonstration Site	Primary	\$51,700							\$51,700	
Peace River Study 2006	Primary	\$8,300					\$8,300			
Identities and ecological effects of ecoestrogens present in the tidal Caloosahatchee River	Primary	\$19,351							\$19,351	
Melaleuca removal form Pop Ash Creel Preserve	Primary	\$16,917					\$16,917			
Identification of microbes critical to the enhancement of seagrass restoration	Primary	\$18,669							\$18,669	
Calusa Blueway Paddling Festival	Primary	\$40,600					\$35,000	\$2,000		\$3,600
<b>Totals</b>		<b>\$4,345,166</b>	<b>\$3,000,000</b>	<b>\$1,684</b>	<b>\$290,000</b>	<b>\$573,101</b>	<b>\$169,063</b>	<b>\$17,035</b>	<b>\$267,054</b>	<b>\$23,629</b>

## Travel Documentation

A total of \$10,000 travel funds are provided specifically for the purposes of travel. Travel funds will be used for purposes such as travel to NEP Directors Meetings, National and state conferences, meetings with EPA staff in Atlanta and Washington D.C., and other overnight travel as needed. \$6,500 has been programmed to support additional special travel and local travel. \$400 has been programmed from non-local sources for travel that is ineligible for federal reimbursement. Minor parking, toll expenses, and boat rental fees will also be funded from this account.

**Table 5: Projected Travel in FY 07**

Date	Purpose	# Travelers	Location	Length of Stay	Travel Mode/Est. Cost	Reg. Fee per Staff	Estimated Cost
October 2006	ANEP Annual Meeting	2	San Francisco, CA.	6 days	Air /\$800	\$300	\$2,000
October 2006	Estuarine Research Federation	1	Norfolk, VA	5 days	Air/\$400	\$250	\$1,000
March 2007	NEP/EPA Spring Mtg.	3	Washington, DC	5 days	Air /\$1100	\$300	\$2,500
Spring 2007	Statewide mtg. With Gulf of Mexico Program	1	Tallahassee, FL	4 days	Auto	\$0	\$500
Spring 2007	Technical Transfer	2	Various	3 days	Air/\$500	\$250	\$2,000
May 2007	Meet with Region 4 Staff	4	Atlanta, GA	3 days	Air/\$1,000	\$0	\$2,000
Summer 2007	US EPA Community Involvement Conference	1	Unknown	5 days	Air/\$500	\$250	\$1,500
FY 06/07	Local Travel	4	Various	<1 day	Auto	\$100	\$6,000
			Total				\$17,500

# Workplan Budget

## Income

The CHNEP and its partners have requested a total of new FY 07 cash contributions of \$3,046,575. Cash from partners totals \$874,100; grant requests from EPA and congress total \$2,172,475. In addition, \$300,006 is funds which are reprogrammed from FY 03 through FY05 budgets primarily from staff scheduled and unscheduled leave which are not funded through salaries. Finally, uncompleted but committed projects using EPA, SFWMD, and undesignated funding total \$975,193.

Total new funds and carry-over funds total \$4,321,774.

## **FY 06/07 Budget**

The FY 06 budget is a task-based budget, similar to FY 06. The change in structure had anticipated as well as surprising benefits. The primary anticipated benefit is better communication with partners. We expect that the structure will yield more financial support from partners and allow for faster development of contracts with EPA, FDEP, SWFWMD, SFWMD and Manatee County. The most surprising benefit is how often the CCMP had to be used to write the Workplan subtask descriptions. As in the previous two years, the Technical Advisory Committee (TAC) subcommittees recommended specific research projects for funding and Citizens Advisory Committee (CAC) subcommittees recommended public outreach projects for funding. Carry-over funding for committed projects is imbedded in the appropriate task, but is identified by project earlier in the report and in the funding sources table.

Project tracking will be accomplished at the subtask level (1.1, 1.2, etc.) Budget controls will be placed at the task level. Table 6 is the CHNEP Budget. Additional fiscal controls occur through the contracts with partners. In previous years, line item fiscal controls, host agency budget fiscal controls, SWFWMD contract fiscal controls, and EPA Cooperative Agreement fiscal controls resulted in a high level of complexity for staff and some lost funding from SWFWMD. The contractual fiscal controls will remain in place. However, the broader CHNEP task-based controls allows for funding to be directed at a policy level.

Table 7 is the EPA Cooperative Agreement amounts. Note that the total for Table 6: CHNEP Budget and Table 7 are slightly different. The CHNEP Budget does not include the required EPA match which will be accomplished through in-kind services. For FY 07, it is anticipated that the in-kind match will be restoration projects which are funded through the SFWMD and Lee County. The EPA Cooperative Agreement budget does not include cash which supports the CHNEP from other partners.

**Table 6: Charlotte Harbor NEP FY 07 Income****Charlotte Harbor NEP Income**

Funding Source	Approved FY 05 Funding	FY 06 Request	Approved FY 06 Funding	FY 07 Request
<b>Federal</b>				
Section 320 Funding	\$506,685.00	\$506,685.00	\$506,685.00	\$492,600.00
EPA Outreach Grant				\$15,000.00
EPA Watershed Grants				\$10,000.00
<b>Total Federal</b>	<b>\$506,685.00</b>	<b>\$506,685.00</b>	<b>\$506,685.00</b>	<b>\$517,600.00</b>
<b>State of Florida</b>				
DEP	\$75,000.00	\$75,000.00	\$75,000.00	\$75,000.00
<b>Subtotal Florida Agency Income</b>	<b>\$75,000.00</b>	<b>\$75,000.00</b>	<b>\$75,000.00</b>	<b>\$75,000.00</b>
<b>Regional</b>				
SFWMD	\$105,000.00	\$100,000.00	\$72,000.00	\$100,255.00
SWFWMD	\$110,000.00	\$110,000.00	\$110,000.00	\$113,500.00
Peace Manasota Water Supply Authority	\$5,000.00	\$5,000.00	\$5,000.00	\$5,000.00
<b>Subtotal Regional Income</b>	<b>\$220,000.00</b>	<b>\$215,000.00</b>	<b>\$187,000.00</b>	<b>\$218,755.00</b>
<b>Local</b>				
Sarasota County	\$25,000.00	\$25,000.00	\$25,000.00	\$25,000.00
Polk County	\$15,000.00	\$15,000.00	\$15,000.00	\$15,000.00
Charlotte County	\$15,000.00	\$15,000.00	\$15,000.00	\$15,000.00
Lee County	\$15,000.00	\$15,000.00	\$15,000.00	\$15,000.00
Manatee County	\$5,000.00	\$5,000.00	\$5,000.00	\$5,000.00
Hardee County		\$1,000.00	\$0.00	\$1,000.00
DeSoto County	\$250.00	\$1,000.00	\$0.00	\$1,000.00
Cape Coral	\$7,500.00	\$7,500.00	\$7,500.00	\$7,500.00
Fort Myers	\$7,500.00	\$7,500.00	\$7,500.00	\$7,500.00
Sanibel	\$5,000.00	\$5,000.00	\$5,000.00	\$5,000.00
Punta Gorda	\$5,000.00	\$5,000.00	\$5,000.00	\$5,000.00
Winter Haven	\$1,000.00	\$1,000.00	\$1,000.00	\$1,000.00
Venice	\$2,500.00	\$2,500.00	\$2,500.00	\$2,500.00
Fort Myers Beach	\$2,500.00	\$2,500.00	\$2,500.00	\$2,500.00
Bartow		\$1,000.00	\$0.00	\$1,000.00
North Port		\$1,000.00	\$1,000.00	\$1,000.00
Carry-over thru FY05 minus commitments				\$300,006.00
<b>Subtotal Local Income</b>	<b>\$106,250.00</b>	<b>\$110,000.00</b>	<b>\$107,000.00</b>	<b>\$410,006.00</b>
<b>Private/Other Grants/Misc.</b>				
Watershed Summit Sponsorships	\$11,250.00			
NOAA Workshop Registrations	\$760.00		\$250.00	
NEP Workshop Registrations	\$2,750.00			
Nature Festival Sponsorship	\$100.00		\$3,500.00	
Workshop Sponsorships			\$50,250.00	
Travel Reimbursement	\$560.76			
Sea Grant	\$500.00			
Contract Carry-over-EPA, WMD, & undes.		\$150,000.00		\$975,193.50
<b>Subtotal Grant/Private Income</b>	<b>\$15,920.76</b>	<b>\$150,000.00</b>	<b>\$54,000.00</b>	<b>\$975,193.50</b>
<b>In-Kind</b>				
Match In-Kind: Charlotte Harbor Initiative	\$506,685.00	\$506,685.00	\$506,685.00	\$492,600.00
<b>Subtotal In-Kind</b>	<b>\$506,685.00</b>	<b>\$506,685.00</b>	<b>\$506,685.00</b>	<b>\$492,600.00</b>
<b>Grand Totals in the Fiscal Year</b>	<b>\$1,430,540.76</b>	<b>\$1,563,370.00</b>	<b>\$1,436,370.00</b>	<b>\$2,689,154.50</b>
<b>Program Cash</b>	<b>\$923,855.76</b>	<b>\$1,056,685.00</b>	<b>\$929,685.00</b>	<b>\$2,196,554.50</b>

**Table 7: Draft FY 06/07 Workplan Budget**

Task #	Task	Personnel	Fringe	Travel	Supplies	Other	Indirect	Total
1	Management Conference & Admin.	\$80,114	\$36,000	\$15,000	\$9,500	\$2,450	\$68,000	\$211,064
2	Outreach	\$70,558	\$31,000	\$2,500	\$8,000	\$313,043	\$60,000	\$485,101
3	Research	\$51,085	\$23,000	\$1,000	\$50	\$1,104,051	\$43,000	\$1,222,185
4	Restoration	\$59,699	\$28,887	\$2,500	\$0	\$15,250	\$54,672	\$161,008
5	Advocacy & Leg Action	\$29,475	\$13,000	\$500	\$0	\$4,500	\$25,000	\$72,475
<b>Total</b>		<b>\$290,930</b>	<b>\$131,887</b>	<b>\$21,500</b>	<b>\$17,550</b>	<b>\$1,439,294</b>	<b>\$250,672</b>	<b>\$2,151,832</b>

**Table 8: FY 06/07 EPA Cooperative Agreement**

Task #	Task	Personnel	Fringe	Travel	Supplies	Other	Indirect	Total
1	Management Conference & Admin.	\$80,114	\$36,000	\$15,000			\$68,000	\$199,114
2	Outreach	\$70,558	\$31,000	\$2,500		\$144,429	\$60,000	\$308,487
3	Research							\$0
4	Restoration	\$4,441	\$1,887	\$0	\$0		\$3,672	\$10,000
5	Advocacy & Leg Action							\$0
	In-Kind					\$517,600		\$517,600
<b>Total</b>		<b>\$155,112</b>	<b>\$68,887</b>	<b>\$17,500</b>	<b>\$0</b>	<b>\$662,029</b>	<b>\$131,672</b>	<b>\$1,035,200</b>

**Table 9: FY 06/07 Proposed SWFWMD Contract**

Task	Project	SWFWMD	CHNEP	Project Total	SWFWMD %
3	RRPP	20,000	20,000	40,000	50%
3	Environmental Indicator Gaps	55,000	55,000	110,000	50%
3	CHVWQMN	15,000	15,000	30,000	50%
3	Staff Support	17,000	17,000	34,000	50%
<b>Totals</b>		<b>\$110,000</b>	<b>\$110,000</b>	<b>\$220,000</b>	

**Table 10: FY 06/07 Funding Sources**

#	Task	Federal	FDEP	SWFWM D	SFWMD	Manatee	Federal Carry-over	WMD Carry-over	Other Carry-over	Discretionary	Total
1	Management & Admin.	\$199,114								\$11,950	\$211,064
2	Outreach	\$308,487		\$3,000	\$50,255		\$111,293			\$12,066	\$485,101
3	Research		\$40,000	\$110,000			\$270,850	\$266,974	\$326,077	\$208,285	\$1,222,185
4	Restoration	\$10,000	\$35,000		\$50,000					\$66,008	\$161,008
5	Advocacy & Leg Action					\$5,000				\$67,475	\$72,475
		<b>\$517,600</b>	<b>\$75,000</b>	<b>\$113,000</b>	<b>\$100,255</b>	<b>\$5,000</b>	<b>\$382,143</b>	<b>\$266,974</b>	<b>\$326,077</b>	<b>\$365,783</b>	<b>\$2,151,832</b>

# GLOSSARY OF ACRONYMS

BMP	Best Management Practice
CAC	Citizens Advisory Committee
CAMA	Coastal and Aquatic Managed Areas
CCHMN	Coastal Charlotte Harbor Monitoring Network
CCMP	Comprehensive Conservation and Management Plan
CFRPC	Central Florida Regional Planning Council
CHEC	Charlotte Harbor Environmental Center
CHNEP	Charlotte Harbor National Estuary Program
CH-RAMP	Charlotte Harbor-Regional Ambient Monitoring Program
CWPRA	Coastal Wetlands Planning, Protection and Restoration Act
CZM	Coastal Zone Management
EAR	Evaluation and Appraisal Report
EPA	Environmental Protection Agency
FDEP	Florida Department of Environmental Protection
FDOT	Florida Department of Transportation
FFWCC	Florida Fish & Wildlife Conservation Commission
FMRI	Florida Marine Resources Institute
FW	Fish & Wildlife
GIS	Geographical Information System
GPRA	Government Performance and Results Act
HAS	Hydrological Alterations Subcommittee
HCS	Habitat Conservation Subcommittee
LID	Low Impact Development
MFL	Minimum Flows and Levels
NRCS	Natural Resources Conservation Service
NEP	National Estuary Program
NOAA	National Oceanic and Atmospheric Administration
NWR	National Wildlife Refuge
PIVOT	Performance Indicators Visualization Outreach Tool
PLRG	Pollutant Load Reduction Goal
PR/MRWSA	Peace River/Manasota Regional Water Supply Authority
R&R	Research and Restoration
RPC	Regional Planning Council
SFWMD	South Florida Water Management District
SRPP	Strategic Regional Policy Plan
SWFWMD	Southwest Florida Water Management District
SWFRPC	Southwest Florida Regional Planning Council
SWIM	Surface Water Improvement Management
SWUCA	Southern Water Use Caution Area
TAC	Technical Advisory Committee
TBRPC	Tampa Bay Regional Planning Council
TMDL	Total Maximum Daily Load
USACOE	United States Army Corps of Engineers
USF&WS	United States Fish and Wildlife Service
USGS	United States Geological Service
WCIND	West Coast Inland Navigation District
WMD	Water Management District
WQ	Water Quality
WQQOS	Water Quality Quantifiable Objectives Subcommittee

**Table 11: FY 06/07 Budget Targets by SWFRPC Codes**

EPA Translation		Personnel	Fringe	Indirect	Travel	Supplies	Supplies	Supplies	Other	Other	Other	Other	Other	Other	Other	Total
Task #		Personnel	Fringe	Indirect	Travel-	Supplies	Computer/ Graphic	Postage	Consulti ng	Carry- over Contract	Adve r-tise	Printing /Reprod uction	Meeting s	Prof Dev	Other Misc	Total
1	Management & Admin.	\$80,114	\$36,000	\$68,000	\$15,000	\$1,500	\$6,000	\$2,000			\$200		\$1,000	\$250	\$1,000	\$211,064
2	Outreach	\$70,558	\$31,000	\$60,000	\$2,500	\$8,000			\$137,200	\$111,293		\$58,500	\$4,800	\$250	\$1,000	\$485,101
3	Research	\$51,085	\$23,000	\$43,000	\$1,000			\$50	\$240,000	\$863,901	\$150					\$1,222,185
4	Restoration	\$59,699	\$28,887	\$54,672	\$2,500	\$0			\$15,000						\$250	\$161,008
5	Advocacy & Leg Action	\$29,475	\$13,000	\$25,000	\$500										\$4,500	\$72,475
	<b>Total</b>	<b>\$290,930</b>	<b>\$131,887</b>	<b>\$250,672</b>	<b>\$21,500</b>	<b>\$9,500</b>	<b>\$6,000</b>	<b>\$2,050</b>	<b>\$392,200</b>	<b>\$975,194</b>	<b>\$350</b>	<b>\$58,500</b>	<b>\$5,800</b>	<b>\$500</b>	<b>\$6,750</b>	<b>\$2,151,832</b>